

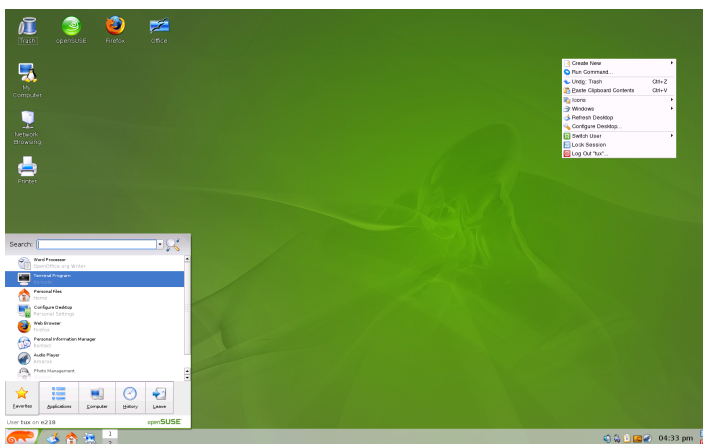
openSUSE 10.3 KDE Quick Start

openSUSE® provides the tools that Linux* users require in their daily activities. It comes with an easy-to-use graphical user interface (KDE* desktop) that communicates with the underlying Linux system to access and manage files, folders, and programs. openSUSE provides an integrated suite of applications for a wide range of purposes (office, multimedia, Internet). The OpenOffice.org suite is also included, which allows you to edit and save files in a number of formats. Because the office suite is available for several operating systems, you can use the same data across different computing platforms.

Getting Started

When you start your system, you are usually prompted to enter your username and password. If you did not install your system yourself, check with your system administrator for your username and password.

After logging in to KDE for the first time, you see the KDE desktop, which shows the following basic elements:



Desktop Icons: Click an icon on the desktop to access its associated program or application. Right-click to open a context menu for moving, copying, or performing other functions on an icon.

Desktop Context Menu: Right-click an empty area on the desktop to access this context menu for creating new objects, such as files, folders, or bookmarks; configuring the appearance of the desktop; running applications; and logging out.

KDE Panel: By default, the panel of your KDE desktop consists of the following areas (from left to right): main menu button, quick launcher, desktop previewer, taskbar, and system tray. You can add or remove icons in the panel and customize the appearance of the panel as well as its location on the desktop. If you hold your mouse pointer over an icon in the panel, a short description is displayed.

Main Menu Button: Use the icon at the far left of the panel to open a menu which holds a search function at the top and several tabs at the bottom, thus providing quick access to the key functions of the menu. The *Applications* tab shows all installed programs in a function-oriented menu structure which makes it easy to find the right application for your purpose even if you do not know the application names yet.

Quick Launcher The quick launcher contains some larger icons that are shortcuts to frequently used programs, folders, and functions, such as an Internet browser, your home folder, and direct desktop access.

Desktop Previewer: Between the quick launcher and the taskbar, find a miniature preview that shows your virtual desktops. openSUSE allows you to organize your programs and tasks on several desktops, which minimizes the number of windows to arrange on the screen (see Section “Using Virtual Desktops”). To switch between desktops, click one of the symbols in the previewer.

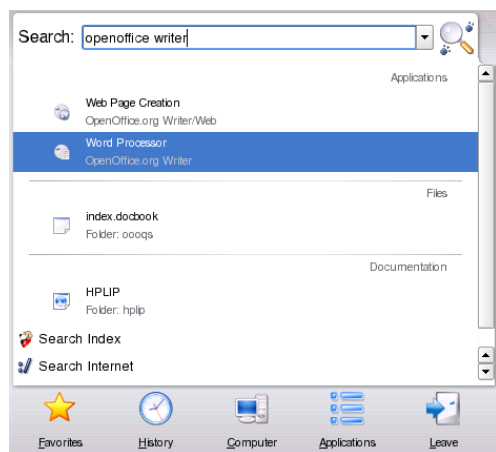
Taskbar: By default, all started applications and open windows are displayed in the taskbar, which allows you to access any application regardless of the currently active desktop. Click to open the application. Right-click to see options for moving, restoring, or minimizing the window.

System Tray: This rightmost part of the panel usually holds some smaller icons, including the system clock displaying time and date, the volume control, and icons for several other helper applications.

Starting Programs

To start a program from the main menu, click the main menu icon in the panel or press **Alt + F1** to open the main menu. For an overview of all programs installed on your system, click *Applications*. The function-oriented menu structure makes it easy to find the right application for your purpose even if you do not know the application names yet. To navigate through the structure, click an entry and use the arrow icons at the right or the left to switch back and forth. Apart from that, the tabs *Favorites* or *History* provide quick access to some applications.

To search for an application, enter the application's name (or part of it) in the search field at the top of the main menu. Each character you enter narrows down the search. The search results are shown directly below the search field. The results are sorted by categories for better overview.



Customizing Your Desktop

You can change the way your KDE desktop looks and behaves to suit your own personal tastes and needs.

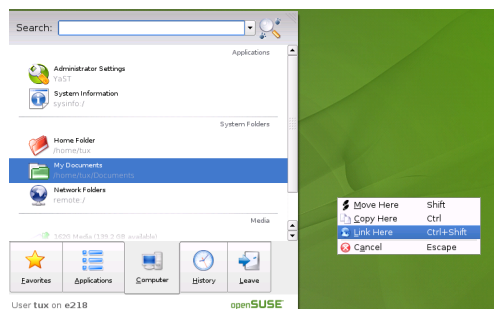
Changing Individual Desktop Elements

In the following, find some examples of how to change individual desktop elements.

Adding Program Icons to Your Desktop

To create a link to an application and place it on the desktop, proceed as follows:

1. Click the main menu button.
2. Browse to the desired program.
3. Left-click and drag the menu entry to the desktop then release the mouse button.
4. Select *Link Here* from the context menu that appears then position the icon as desired.

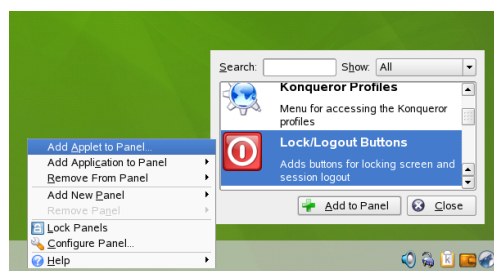


To delete an icon from your desktop, right-click the program icon and select *Move to Trash*.

Customizing the KDE Panel

You can customize the KDE panel according to your preferences by adding, deleting, or moving icons or changing the overall appearance of the panel.

1. To add or remove icons from the panel, right-click an empty patch in the panel. A context-menu appears.
2. To add an application, click *Add Application to Panel* and select the desired application from one of the categories of the submenu.
3. To add an applet (miniprogram), click *Add Applet to Panel* and, from the dialog box that appears, select the desired applet. Click *Add to Panel* to insert the applet into the panel.



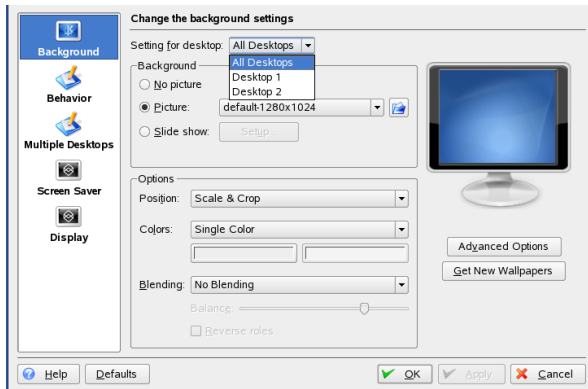
4. To remove icons from the panel, select *Remove from Panel* → *Applications* or *Remove from Panel* → *Applet* and choose the icon to remove.

5. To change the overall appearance or behavior of the panel, select *Configure Panel* from the context menu. A configuration dialog appears where you can adjust further settings.

Changing the Desktop Background

You can change the background colors of your desktop or select a picture to use as the background. Because KDE offers virtual desktops (see Section “Using Virtual Desktops”), you can apply these changes to one or all of your virtual desktops.

1. Right-click an empty patch of the desktop and select *Configure Desktop*. A configuration dialog appears.



2. In *Settings for Desktop* select the virtual desktops to which the changes should apply.
3. If you want a different picture as the background, click *Picture* and select one of the pictures provided by the list. To use a custom picture, click the folder button beneath the list and select an image file from the file system.
4. Click *Slide Show* to have multiple images appear in a slide show mode.
5. If you do not want a picture on the background, click *No picture*.
6. From the *Options* group, click the left button below *Colors* to select the color for your background. For a multicolor background, set *Colors* to an option other than *Single Color* and click the right button below to select a second color.
7. Click *Apply* then *OK* to close the configuration dialog.

Using the KDE Control Center

Apart from changing individual desktop elements, KDE allows you to personalize your desktop to a very high degree. Find more settings to adjust the overall appearance and behavior of your desktop in the KDE control center. There, you can also change fonts, keyboard and mouse configuration, regional and language settings, parameters for your Internet and network usage, and more.

Start the control center from the main menu by selecting *Favorites* → *Configure Desktop* or press Alt + F2 and enter *kcontrol*.



The sidebar provides different categories with a subset of settings each. To get an impression of the numerous possibilities, just click a category icon and explore the possibilities provided there.

For an overview of all categories, switch to a tree view. Change the view by selecting *View* → *Mode* → *Tree View*.

Clicking an item displays the corresponding settings on the right. Change the settings as desired. No changes take effect until you click *Apply*. Reset all items on the page to the default values by clicking *Default*. Performing tasks in some areas of the control center requires system administrator (otherwise known as *root*) permissions.

Using Virtual Desktops

The desktop environment allows you to organize your programs and tasks on several virtual desktops. If you often run a lot of programs simultaneously, this minimizes the number of windows to arrange on your screen. You might, for example, use one desktop for e-mailing and calendaring and another for word processing or graphics applications.

Moving an Application to a Virtual Desktop

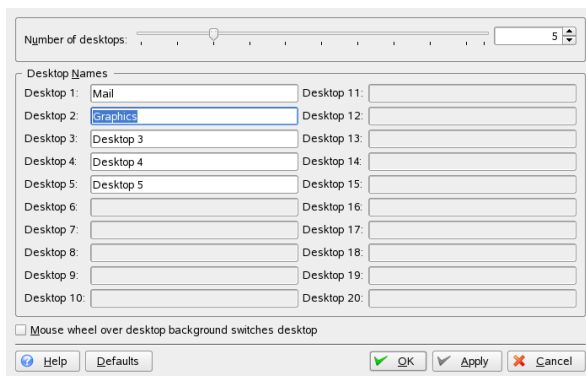
You can display a running application on one or all virtual desktops or move it to other desktops.

1. Open the application.
2. Right-click the title bar of the application.
3. Click *To Desktop*.
4. Select the desktop on which to place the application.
5. To switch between desktops, click the desired desktop in the desktop previewer in the panel.

Adding Additional Virtual Desktops

Some users might need more desktops than provided by default. To add additional desktops:

1. Right-click the desktop previewer in the panel and select *Configure Desktops*. A configuration dialog appears where you can increase or reduce the number of virtual desktops. You can also change the default names of the desktop.



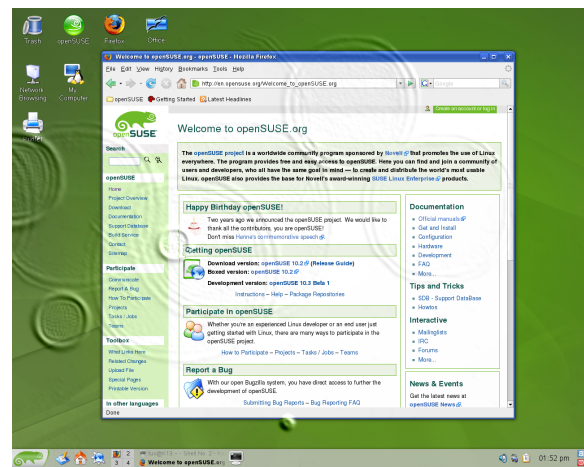
2. Click *OK* to apply the changes and to close the configuration dialog.
3. If you want the names of the desktops to appear in the desktop previewer rather than the number, right-click the desktop previewer and select *Pager Options* → *Desktop Name*.

Using 3D Desktops Effects

If your computer supports Xgl, you can use graphical effects like turning your desktop into a rotating 3D cube, enabling translucent or transparent windows, zooming in and out of the desktop screen, and using other window effects, such as shadows, fading, and transformations.

To enable and use Xgl, some hardware requirements must be met—in particular, your graphics adapter must be capable of providing 3D support. After your system has been configured for Xgl as described in *KDE User Guide*, you can make use of the following effects:

- Wrap your virtual desktops around a cube and rotate the cube to get to another virtual desktop. Rotate the cube with **Ctrl + Alt + →** or **Ctrl + Alt + ←**.
- Fly through the range of virtual desktops without having to use the pager and select the one to use. To change to this panel-like view, use **Ctrl + Alt + ↓**. To scroll to a desktop left or right of the current one, keep holding **Ctrl + Alt** and use **→** and **←**.
- Zoom into certain parts of the desktop. Select the area to enlarge and right-click while holding the **Windows** key.
- Show all windows opened on one virtual desktop as if they were resized so all fit in the display at once. Arrange the windows using **Ctrl + Alt + ↑**. While holding down **Ctrl + Alt**, use the arrow keys to determine the focus.
- Create virtual raindrops on your desktop and use a virtual windshield wiper to get rid of them. Toggle the raindrops with **Shift + F9** and toggle the windshield wiper with **Shift + F8**.



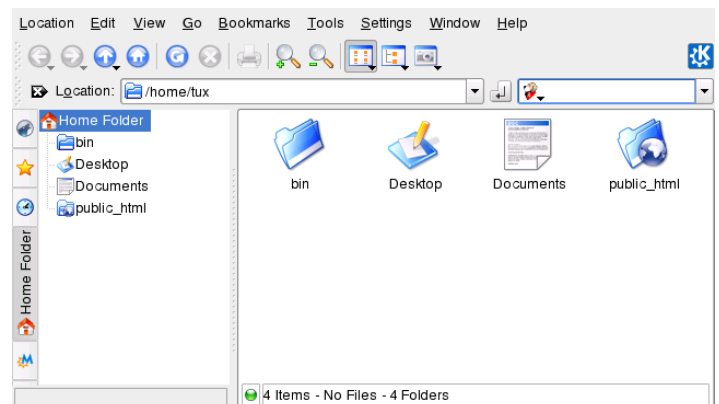
Using Konqueror

Konqueror is a unified Web browser, file manager, document viewer, and image viewer. As a file manager, it lets you display, manage, and create files and generally organize your file system the way you like.

Start Konqueror as a file manager by clicking the house icon in the panel. Konqueror displays the contents of your home directory.

Konqueror Main Window

The Konqueror main window consists of the following elements:



Menu Bar: The menu bar holds menu items for actions like copying, moving, or deleting files, changing views, starting additional tools, defining your settings, and getting help.

Toolbar: The toolbar provides quick access to frequently used functions that can also be accessed via the menu. If you hover the mouse pointer over an icon, a short description is displayed.

Location Bar: The location bar shows the path to your directory or file in your file system. You can enter a path to a directory directly by typing it in or by clicking one of the directories in the display field. Delete the contents of

the location bar by clicking the black symbol with a white X on the left. After typing an address, press **Enter**.

Navigation Panel: Hide and show the navigation panel on the left by pressing **F9**. The navigation panel displays your information in a tree view. Determine which contents to see by clicking one of the symbols in the tab at the left of the navigation panel. If you hold your mouse pointer over an icon, a short description is displayed.

Display Field: The display field shows the contents of the selected directory or file. In the **View** menu, choose between different view modes to display the contents, such as *Icon View*, *Tree View*, or *Detailed List View*. If you click a file, Konqueror shows a preview of the contents or loads the file into an application for further processing. If you hold the mouse pointer over the file, Konqueror shows a tool tip with detailed information about the file, such as owner, permissions, or last modification date.

Managing Files and Folders with Konqueror

To perform actions like copying, moving, or deleting files, you need appropriate permissions to the folders and files involved in your action.

To copy or move a file or folder, proceed as follows:

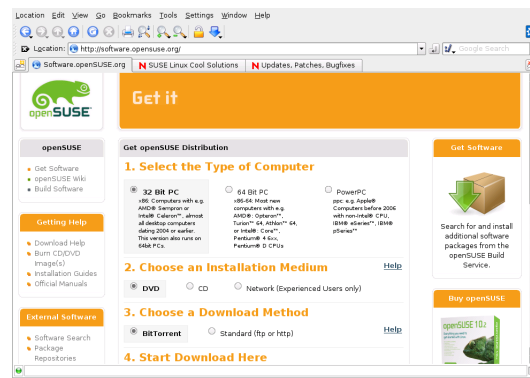
1. To select one or multiple files and folders in Konqueror press **Ctrl** and click the files.
2. Right-click and select *Copy* or *Cut* from the context menu.
3. Navigate to the destination folder in which to insert the object. Right-click the destination folder and select *Paste*. The object is copied or moved there.

You can also copy or move objects by dragging and dropping them. When dropping the object, you are asked whether the object should be moved or copied.

To delete a file or folder, right-click the object and select *Move to Trash* from the context menu. The object is moved to the trash bin from which you can restore it if necessary or delete the object irretrievably.

Browsing the Internet with Konqueror

To use Konqueror as a Web browser, just type a URL in the location bar. Like Firefox*, Konqueror also features tabbed browsing. This means that you can load one page in the background while reading another. To open an empty tab in Konqueror, press **Ctrl + Shift + N** and enter a new URL. Alternatively, right-click a link in the Web site currently displayed and select *Open in New Tab*. Right-click a tab to access more tab options like reloading, duplicating, or closing the tab.



You can also use bookmarks for your favorite Web sites (and also for files and folders). Add and manage your bookmarks with the *Bookmarks* menu.

Browsing the Internet with Firefox

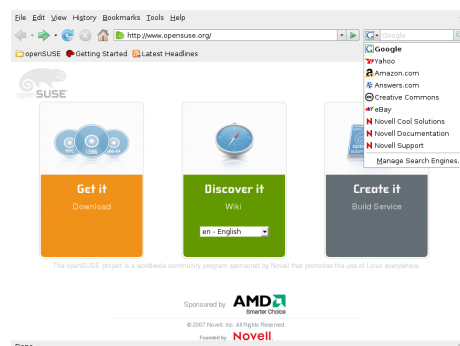
As well as Konqueror, openSUSE also includes the Firefox Web browser. To start Firefox, press **Alt + F2** and enter *firefox*.

With features like tabbed browsing, pop-up window blocking, and download and image management, Firefox combines the latest Web technologies. Its easy access to different search engines helps you find the information you need. Enter a URL in the location bar to start browsing. To open an empty tab in Firefox, press **Ctrl + T** and enter a new URL. To open a link in a new tab, click the link with your middle mouse button. Right-click the tab itself to access more tab options. You can create a new tab, reload one or all existing tabs, or close them. You can also change the sequence of the tabs by dragging and dropping them to the desired position.

Finding Information with Firefox

Firefox offers two different kinds of search options: you can find information on the Web or you can search the current Web page for keywords.

1. To start a search on the Web with the Google* engine, just type your search keywords in the integrated search bar at the right of the location bar and press **Enter**. The results appear in the window.
2. To use a different search engine, click the G icon in the search bar to open a list of other search engines.

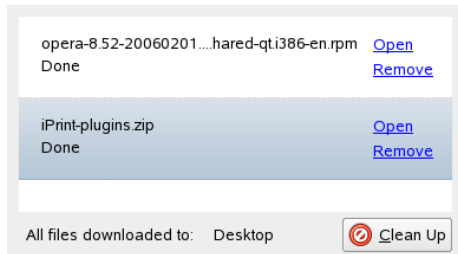


- Click the desired engine and press Enter to start the search.

To search the current Web page for keywords, press Ctrl + F to open a find bar at the bottom of the window. Enter your search keyword there and use the buttons beneath the bar to search in different directions or to highlight all hits in the text.

Downloading Files from the Web

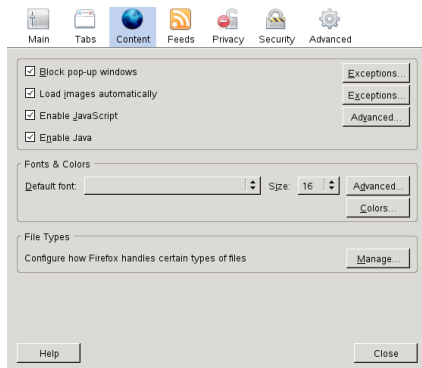
If you download a file with Firefox, the Download Manager starts and saves this file to the folder configured in the preferences. By default, your desktop is the destination folder for downloaded files. Firefox shows your finished downloads in a dialog box.



You can open the downloaded files from there directly. To clean up the history of downloaded files, click *Clean Up*.

Configuring Firefox Preferences

To adjust the default download folder or activate or modify the pop-up blocking feature, click *Edit* → *Preferences*.



From here, you can also configure numerous other settings, such as appearance, language, privacy, and tab options. Just click the icons and set the options on each page according to your preferences. Click *Close* to apply the changes.

Managing Passwords with KWallet

When you select the option to remember a password in a KDE application for the first time (for your e-mail account, for example), the KWallet wizard starts by default. KWallet is a password management tool that can collect all passwords and store them in an encrypted file.



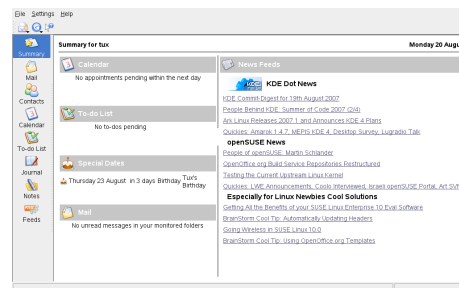
To activate KWallet, select *Basic Setup* and click *Next*. Select *Yes, I wish to use the KDE wallet to store my personal information* and enter a password. This is your master password to open KWallet. It cannot be recovered if you forget it. Click *Finish* to close the wizard. After this initial configuration, you can open your wallet at any time to view, search, delete, or create entries. Normally you do not need to insert an entry manually. KDE recognizes if a resource requires authentication and KWallet starts automatically, prompting you for the KWallet password.

E-Mailing and Calendaring

For reading and managing your mails and appointments, you can use Kontact as your personal information management tool (PIM). Kontact combines KDE applications like KMail, KOrganizer, and KAddressBook into a single interface. This gives you easy access to your e-mail, calendar, address book, and other PIM functionality.

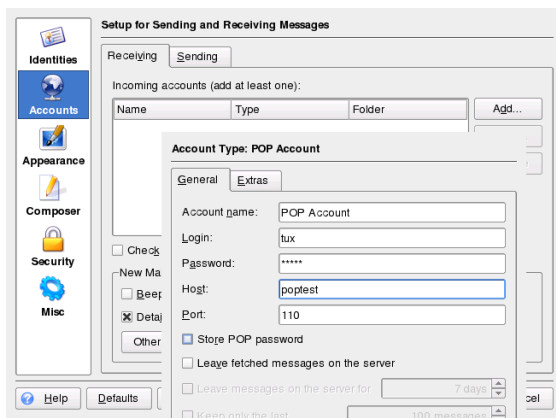
Starting Kontact for the First Time

To start Kontact, press Alt + F2 and enter `kontact`. To access one of the components, click the corresponding icon in the left sidebar.



Before you can send or receive mails, you must configure your e-mail account.

- Click the *Mail* icon then select *Settings* → *Configure KMail*.
- In the configuration dialog, click *Accounts*. There you can configure the settings for outgoing and incoming mails.
- For incoming mails, click the *Receiving* tab and click *Add*. Select the appropriate account type and enter the details in the following dialog.

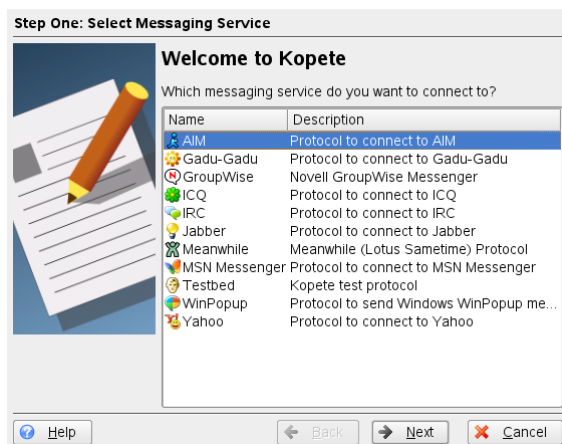


4. Proceed similarly for outgoing mails on the *Sending* tab. If you are not sure about the settings or items to select, consult your Internet Service Provider or system administrator.

Instant Messaging with Kopete

Kopete is an online messenger application that allows multiple partners connected to the Internet to chat with each other. Kopete currently supports all common messenger protocols, such as AOL* Instant Messenger (AIM), Group-Wise® Messenger, ICQ, IRC, Jabber*, Lotus* Sametime, MSN, SMS, and Yahoo!*. To be able to use instant messaging (IM), you must register with a provider offering IM services.

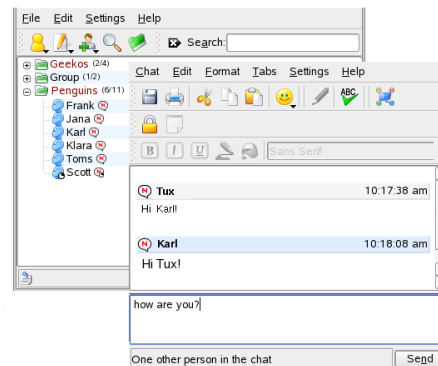
To start Kopete, press **Alt + F2** and enter `kopete`. When starting Kopete for the first time, a configuration wizard appears that assists you in creating your user profile.



First, select the service with which you have registered and click *Continue*. Then enter the user data received on registration with the messaging service: a user ID, a password, and the server name and port. Complete the configuration of the messenger account by clicking *Finish*.

Add contacts to chat with them by clicking *File → Add Contact*. An assistant appears to help with creation. However, you must be online and connected to the selected messaging service to add a contact to your list.

To start a chat, click the desired contact and type your message in the lower part of the chatting window. Press **Enter** to send the message. The upper part of the window displays the messages you have sent and received.



Starting OpenOffice.org

The office suite OpenOffice.org offers a complete set of office tools, including word processor, spreadsheet, presentation, vector drawing, and database components. Because OpenOffice.org is available for a number of operating systems, you can use the same data across different computing platforms.

To start OpenOffice.org, press **Alt + F2** and enter `ooo` or open the main menu and navigate to *Office Suite*. To create a new document, select *File → New* and choose the type of document to create. To open an existing document, select *Open* and choose the appropriate file from the file system.

Viewing PDF Files

Documents that need to be shared or printed across platforms can be saved as PDF (Portable Document Format) files, for example, in the OpenOffice.org suite. openSUSE ships with several PDF viewers, such as KPDF and Adobe* Acrobat* Reader.

To access KPDF or Adobe* Acrobat* Reader:

1. Click the main menu button.
2. Click *Office → Document Viewer*. Select *Acrobat Reader* or *KPDF* to open the PDF viewer of your choice. Alternatively, press **Alt + F2** and enter `acroread` or `kpdf`.
3. To view a PDF file, click *File → Open*. Locate the desired PDF file and click *Open*.
4. Navigate through the documents by using the navigation icons at the top or bottom of the window. If your PDF document provides bookmarks, you can access them in the left panel of the viewer.

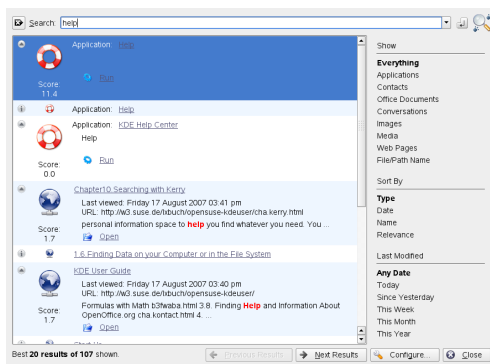
Searching for Data

KDE provides more than one application for finding data on your computer or in the file system. With *Kerry*, you can easily search your personal information space (usually your home folder), which is indexed by *Beagle*. *KFind* is another option.

Using Kerry

Use *Kerry* to find documents, e-mails, Web history, IM/ITC conversations, source code, images, music files, applications, and much more:

1. Press **Alt + Space** to open the *Kerry Beagle Search* dialog.
2. Enter the search string in *Search*. Enter words or phrases and modify your search options as described in the tips displayed in the search window.
3. Click an entry in the column on the right to select the scope of the search. The selected entry is highlighted.
4. Click the *Enter* icon to start the search. The results are displayed in the window. Use the links contained in each result to open the result directly or show its location in the file system with the file manager.



Using KFind

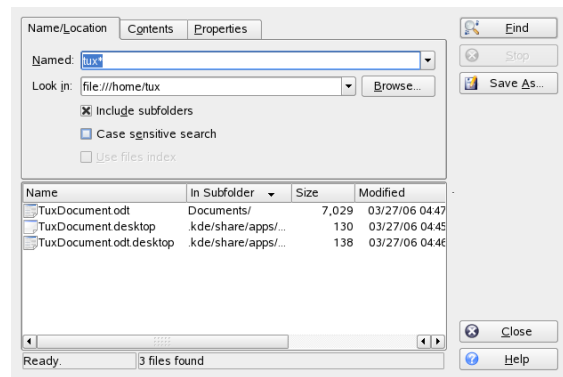
To perform basic and advanced searches, use *KFind*. Start it from the main menu by clicking *Applications → Find Files/Folders* or press **Alt + F2** and enter *kfind*.

Searching by Name

To use a filename (or a part of it) as the search keyword, proceed as follows:

1. Enter the filename or a part of the filename in the *Named* input field. Use wild cards, such as an asterisk (*), to indicate missing characters in the filename.
2. Specify the folder in which to search for the file. Either enter a path to the folder in *Look in* or click *Browse* to locate the folder.
3. To search subfolders, check *Include Subfolders*.
4. Click *Find* to start the search. The results are displayed in the lower part of the dialog. To directly open the

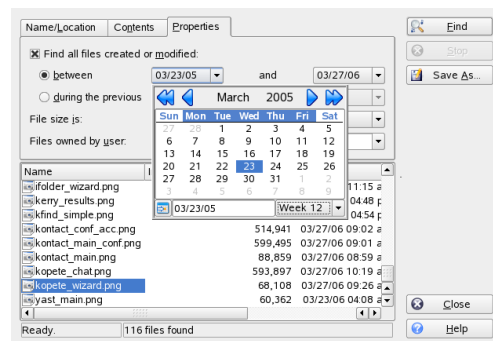
result, just click it. Right-click it to choose one of the options from the context menu.



Searching by Contents or Properties

For a more detailed search, you can also specify further options, such as a text the file must contain or the creation or modification date of a file.

1. On the *Name/Location* tab, specify at least the path to search for the file. You can leave the *Named* empty.
2. To search for certain contents in a file, click the *Contents* tab. In *Containing Text*, enter the word or phrase the file to find must contain. This option does not work for all types of files.
3. To search for properties such as creation or modification date of the file, click the *Properties* tab and choose the options you want.

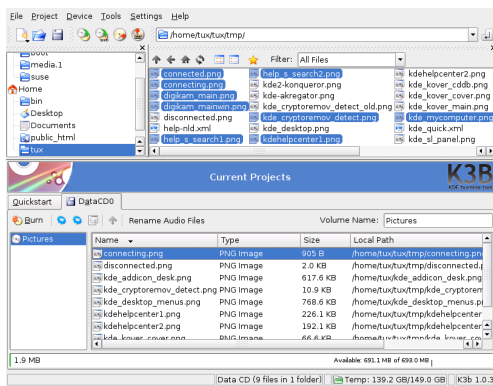


4. Click *Find* to start the search.

Creating a CD or DVD

If you possess a CD or DVD writer, you can burn files to a CD or DVD with *K3b*.

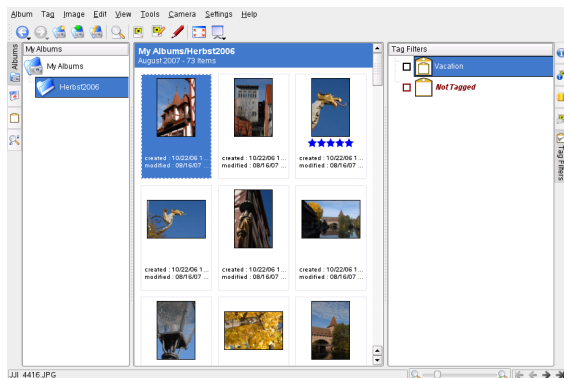
1. Press **Alt + F2** and enter *k3b*. *K3b* opens.
2. Click *New Data CD Project* in the bottom part of the window.
3. Use the tree view in the top left part of the window to search for the files or folders to burn. When they appear in the top right part of the window, drag and drop them into the *Current Projects* window.



4. Insert a writable CD into the device then click the *Burn* icon.
5. Enter the required information in the *Data Project* dialog. If you are not sure which settings to choose, click *K3b Defaults*. This should work well for almost all files.
6. Click *Burn*.

Managing Your Digital Image Collection

With digiKam, it is easy to manage your digital images: download your images from the camera, edit and improve them, organize them in albums (or flag them with tags for easy retrieval, independent of folders or albums), and archive them on CD or export them to a Web image gallery. digiKam also contains a set of useful batch functions and plug-ins, allowing you to convert multiple images to various different formats, rename multiple images, or automatically improve them with functions such as red eye reduction, speck removal, and hot pixel removal. Various filter and effect plug-ins help create works of art from your digital images.



To start digiKam, press **Alt + F2** and enter `digikam`. On first start-up, digiKam creates a custom folder in which to store your albums.

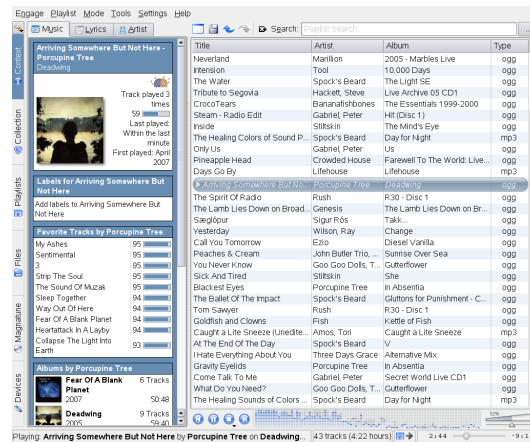
digiKam's main window contains a tree view at the left and shows thumbnails of the images at the right. For quick access to your images, use the sidebar at the left, which allows you to switch between different views, sorting the images according to albums, tags, dates or searches. To enter

digiKam's viewing and editing mode, double-click an image thumbnail.

Managing Your Music Collection

KDE's amaroK music player allows you to play various audio formats, create playlists, import music from an iPod* (or upload files to your iPod), and listen to streaming audio broadcasts of radio stations on the Internet. The file types supported depend on the engine used for amaroK.

To start amaroK, press **Alt + F2** and enter `amarok`. On first start, amaroK launches a *First-Run Wizard* with which to define the folders where amaroK should look for your music files.

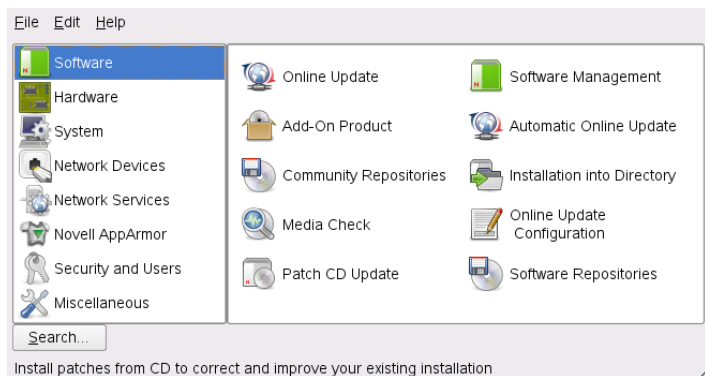


amaroK's main window shows a sidebar on the left providing different views: your music collection, a context browser, your playlists, a file browser, etc. The right part of the window shows the current playlist. To play music, just drag and drop items from any of the sidebar browsers to the playlist area. Double-click an item in the playlist to start playback.

If your music files are properly tagged (containing at least information about the artist and album), you can make use of several nice amaroK features. To automatically fetch the album cover images from Amazon, select *Tools* → *Cover Manager* and click *Fetch Missing Covers*. The next time you play a track from this album, the cover is displayed in the context browser and on the on-screen display. To learn more about the artist, switch to the *Context* browser in the sidebar. Click the *Artist* tab to make amaroK search for the appropriate Wikipedia article, which is then displayed in the context browser. To view a track's lyrics, click the *Lyrics* tab to start a search and display the results.

Configuring Your System with YaST

Whereas the KDE control center is only for configuring your KDE desktop, you can change the installation and the configuration of your whole system with YaST. Therefore, administrator (`root`) permission is required to open YaST.



YaST holds various modules for adjusting your system settings. They are subdivided into the following categories:

Software: Use the modules of this category to set certain options for installation and update and to install or remove software packages.

Hardware: Use these modules to configure the hardware of your computer, such as monitor, keyboard, mouse, printer, or scanner.

System: With these modules, you can change system settings, such as date, time, or language, and perform tasks, such as backup or restoration of files.

Network Devices: Use these modules to configure your network devices, such as network cards, ISDN, DSL, or modem.

Network Services: These modules are for network services and for configuring several clients, such as LDAP and NFS clients.

Novell AppArmor: Use the modules of this category to configure the Novell AppArmor application security system.

Security and Users: Here, you can configure security aspects, such as the firewall options, and create and manage users and groups.

Miscellaneous: Holds several modules that cannot easily be classified into the first six module groups. For example, you can view log files, read the release notes and install drivers from a vendor CD.

To open YaST, press **Alt + F2** and enter `yast`. A dialog opens in which to enter the `root` password. The YaST modules offer integrated online help texts.

Managing Printers

Printers can either be connected to your system locally or accessed over a network. To use a local printer, make sure

that it is connected to your machine. Shut down the system before connecting a non-USB printer to your system.

You can configure printers with YaST. Start YaST and select **Hardware** → **Printer** in the YaST control center. This opens the main printer configuration window. If autodetection of printing devices fails, click **Add** in the *Printer Configuration* dialog to start the manual configuration workflow. Follow the instructions in the YaST online help. If you are not sure which option to choose and which information to enter, ask your system administrator.

After configuring a printing device correctly, you can address it from any application.

Logging Out

When you are finished using the computer, you can log out and leave the system running or restart or shut down the computer. Click the main menu button on your panel and select **Leave** → **Logout**. This ends your session but leaves the system running. To turn off the computer, select **Leave** → **Shutdown Computer** instead.

For More Information

This guide gave you a short introduction to the KDE desktop and some key applications running on it. To discover more, refer to *KDE User Guide* and the other manuals available for openSUSE at <http://www.novell.com/documentation/opensuse103> or in your installed system under `/usr/share/doc/manual`.

Legal Notice

Copyright© 2006-2007 Novell, Inc. All rights reserved.

Permission is granted to copy, distribute and/or modify this document under the terms of the GNU Free Documentation License, Version 1.2 or any later version published by the Free Software Foundation; with no Invariant Sections, no Front-Cover Texts, and no Back-Cover Texts. A copy of the license is included in the section entitled “GNU Free Documentation License”.

SUSE®, openSUSE®, the openSUSE® logo, Novell®, the Novell® logo, the N® logo, are registered trademarks of Novell, Inc. in the United States and other countries. Linux* is a registered trademark of Linus Torvalds. All third-party trademarks are the property of their respective owners. A trademark symbol (® , ™, etc.) denotes a Novell trademark; an asterisk (*) denotes a third-party trademark.

GNU Free Documentation License

Version 1.2, November 2002

Copyright (C) 2000,2001,2002 Free Software Foundation, Inc. 59 Temple Place, Suite 330, Boston, MA 02111-1307 USA

Everyone is permitted to copy and distribute verbatim copies of this license document, but changing it is not allowed.

PREAMBLE

The purpose of this License is to make a manual, textbook, or other functional and useful document “free” in the sense of freedom: to assure everyone the effective freedom to copy and redistribute it, with or without modifying it, either commercially or noncommercially. Secondly, this License preserves for the author and publisher a way to get credit for their work, while not being considered responsible for modifications made by others.

This License is a kind of “copyleft”, which means that derivative works of the document must themselves be free in the same sense. It complements the GNU General Public License, which is a copyleft license designed for free software.

We have designed this License in order to use it for manuals for free software, because free software needs free documentation: a free program should come with manuals providing the same freedoms that the software does. But this License is not limited to software manuals; it can be used for any textual work, regardless of subject matter or whether it is published as a printed book. We recommend this License principally for works whose purpose is instruction or reference.

APPLICABILITY AND DEFINITIONS

This License applies to any manual or other work, in any medium, that contains a notice placed by the copyright holder saying it can be distributed under the terms of this License. Such a notice grants a world-wide, royalty-free license, unlimited in duration, to use that work under the conditions stated herein. The “Document”, below, refers to any such manual or work. Any member of the public is a licensee, and is addressed as “you”. You accept the license if you copy, modify or distribute the work in a way requiring permission under copyright law.

A “Modified Version” of the Document means any work containing the Document or a portion of it, either copied verbatim, or with modifications and/or translated into another language.

A “Secondary Section” is a named appendix or a front-matter section of the Document that deals exclusively with the relationship of the publishers or authors of the Document to the Document’s overall subject (or to related matters) and contains nothing that could fall directly within that overall subject. (Thus, if the Document is in part a textbook of mathematics, a Secondary Section may not explain any mathematics.) The relationship could be a matter of historical connection with the subject or with related matters, or of legal, commercial, philosophical, ethical or political position regarding them.

The “Invariant Sections” are certain Secondary Sections whose titles are designated, as being those of Invariant Sections, in the notice that says that the Document is released under this License. If a section does not fit the above definition of Secondary then it is not allowed to be designated as Invariant. The Document may contain zero Invariant Sections. If the Document does not identify any Invariant Sections then there are none.

The “Cover Texts” are certain short passages of text that are listed, as Front-Cover Texts or Back-Cover Texts, in the notice that says that the Document is released under this License. A Front-Cover Text may be at most 5 words, and a Back-Cover Text may be at most 25 words.

A “Transparent” copy of the Document means a machine-readable copy, represented in a format whose specification is available to the general public, that is suitable for revising the document straightforwardly with generic text editors or (for images composed of pixels) generic paint programs or (for drawings) some widely available drawing editor, and that is suitable for input to text formatters or for automatic translation to a variety of formats suitable for input to text formatters. A copy made in an otherwise Transparent file format whose markup, or absence of markup, has been arranged to thwart or discourage subsequent modification by readers is not Transparent. An image format is not Transparent if used for any substantial amount of text. A copy that is not “Transparent” is called “Opaque”.

Examples of suitable formats for Transparent copies include plain ASCII without markup, Texinfo input format, LaTeX input format, SGML or XML using a publicly available DTD, and standard-conforming simple HTML, PostScript or PDF designed for human modification. Examples of transparent image formats include PNG, XCF and JPG. Opaque formats include proprietary formats that can be read and edited only by proprietary word processors, SGML or XML for which the DTD and/or processing tools are not generally available, and the machine-generated HTML, PostScript or PDF produced by some word processors for output purposes only.

The “Title Page” means, for a printed book, the title page itself, plus such following pages as are needed to hold, legibly, the material this License requires to appear in the title page. For works in formats which do not have any title page as such, “Title Page” means the text near the most prominent appearance of the work’s title, preceding the beginning of the body of the text.

A section “Entitled XYZ” means a named subunit of the Document whose title either is precisely XYZ or contains XYZ in parentheses following text that translates XYZ in another language. (Here XYZ stands for a specific section name mentioned below, such as “Acknowledgements”, “Dedications”, “Endorsements”, or “History”). To “Preserve the Title” of such a section when you modify the Document means that it remains a section “Entitled XYZ” according to this definition.

The Document may include Warranty Disclaimers next to the notice which states that this License applies to the Document. These Warranty Disclaimers are considered to be included by reference in this License, but only as regards disclaiming warranties; any other implication that these Warranty Disclaimers may have is void and has no effect on the meaning of this License.

VERBATIM COPYING

You may copy and distribute the Document in any medium, either commercially or noncommercially, provided that this License, the copyright notices, and the license notice saying this License applies to the Document are reproduced in all copies, and that you add no other conditions whatsoever to those of this License. You may not use technical measures to obstruct or control the reading or further copying of the copies you make or distribute. However, you may accept compensation in exchange for copies. If you distribute a large enough number of copies you must also follow the conditions in section 3.

You may also lend copies, under the same conditions stated above, and you may publicly display copies.

COPYING IN QUANTITY

If you publish printed copies (or copies in media that commonly have printed covers) of the Document, numbering more than 100, and the Document’s license notice requires Cover Texts, you must enclose the copies in covers that carry, clearly and legibly, all these Cover Texts: Front-Cover Texts on the front cover, and Back-Cover Texts on the back cover. Both covers must also clearly and legibly identify you as the publisher of these copies. The front cover must present the full title with all words of the title equally prominent and visible. You may add other material on the covers in addition. Copying with changes limited to the covers, as long as they preserve the title of the Document and satisfy these conditions, can be treated as verbatim copying in other respects.

If the required texts for either cover are too voluminous to fit legibly, you should put the first ones listed (as many as fit reasonably) on the actual cover, and continue the rest onto adjacent pages.

If you publish or distribute Opaque copies of the Document numbering more than 100, you must either include a machine-readable Transparent copy along with each Opaque copy, or state in or with each Opaque copy a computer-network location from which the general network-using public has access to download using public-standard network protocols a complete Transparent copy of the Document, free of added material. If you use the latter option, you must take reasonably prudent steps, when you begin distribution of Opaque copies in quantity, to ensure that this Transparent copy will remain thus accessible at the stated location until at least one year after the last time you distribute an Opaque copy (directly or through your agents or retailers) of that edition to the public.

It is requested, but not required, that you contact the authors of the Document well before redistributing any large number of copies, to give them a chance to provide you with an updated version of the Document.

MODIFICATIONS

You may copy and distribute a Modified Version of the Document under the conditions of sections 2 and 3 above, provided that you release the Modified Version under precisely this License, with the Modified Version filling the role of the Document, thus licensing distribution and modification of the Modified Version to whoever possesses a copy of it. In addition, you must do these things in the Modified Version:

- A.** Use in the Title Page (and on the covers, if any) a title distinct from that of the Document, and from those of previous versions (which should, if there were any, be listed in the History section of the Document). You may use the same title as a previous version if the original publisher of that version gives permission.
- B.** List on the Title Page, as authors, one or more persons or entities responsible for authorship of the modifications in the Modified Version, together with at least five of the principal authors of the Document (all of its principal authors, if it has fewer than five), unless they release you from this requirement.
- C.** State on the Title page the name of the publisher of the Modified Version, as the publisher.
- D.** Preserve all the copyright notices of the Document.
- E.** Add an appropriate copyright notice for your modifications adjacent to the other copyright notices.
- F.** Include, immediately after the copyright notices, a license notice giving the public permission to use the Modified Version under the terms of this License, in the form shown in the Addendum below.
- G.** Preserve in that license notice the full lists of Invariant Sections and required Cover Texts given in the Document’s license notice.
- H.** Include an unaltered copy of this License.
- I.** Preserve the section Entitled “History”. Preserve its Title, and add to it an item stating at least the title, year, new authors, and publisher of the Modified Version as given on the Title Page. If there is no section Entitled “History” in the Document, create one stating the title, year, authors, and publisher of the Document as given on its Title Page, then add an item describing the Modified Version as stated in the previous sentence.
- J.** Preserve the network location, if any, given in the Document for public access to a Transparent copy of the Document, and likewise the network locations given in the Document for previous versions it was based on. These may be placed in the “History” section. You may omit a network location for a work that was published at least four years before the Document itself, or if the original publisher of the version it refers to gives permission.
- K.** For any section Entitled “Acknowledgements” or “Dedications”, Preserve the Title of the section, and preserve in the section all the substance and tone of each of the contributor acknowledgements and/or dedications given therein.
- L.** Preserve all the Invariant Sections of the Document, unaltered in their text and in their titles. Section numbers or the equivalent are not considered part of the section titles.
- M.** Delete any section Entitled “Endorsements”. Such a section may not be included in the Modified Version.
- N.** Do not retitle any existing section to be Entitled “Endorsements” or to conflict in title with any Invariant Section.
- O.** Preserve any Warranty Disclaimers.

If the Modified Version includes new front-matter sections or appendices that qualify as Secondary Sections and contain no material copied from the Document, you may at your option designate some or all of these sections as invariant. To do this, add their titles to the list of Invariant Sections in the Modified Version’s license notice. These titles must be distinct from any other section titles.

You may add a section Entitled “Endorsements”, provided it contains nothing but endorsements of your Modified Version by various parties—for example, statements of peer review or that the text has been approved by an organization as the authoritative definition of a standard.

You may add a passage of up to five words as a Front-Cover Text, and a passage of up to 25 words as a Back-Cover Text, to the end of the list of Cover Texts in the Modified Version. Only one passage of Front-Cover Text and one of Back-Cover Text may be added by (or through arrangements made by) any one entity. If the Document already includes a cover text for the same cover, previously added by you or by arrangement made by the same entity you are acting on behalf of, you may not add another; but you may replace the old one, on explicit permission from the previous publisher that added the old one.

The author(s) and publisher(s) of the Document do not by this License give permission to use their names for publicity for or to assert or imply endorsement of any Modified Version.

COMBINING DOCUMENTS

You may combine the Document with other documents released under this License, under the terms defined in section 4 above for modified versions, provided that you include in the combination all of the Invariant Sections of all of the original documents, unmodified, and list them all as Invariant Sections of your combined work in its license notice, and that you preserve all their Warranty Disclaimers.

The combined work need only contain one copy of this License, and multiple identical Invariant Sections may be replaced with a single copy. If there are multiple Invariant Sections with the same name but different contents, make the title of each such section unique by adding at the end of it, in parentheses, the name of the original author or publisher of that section if known, or else a unique number. Make the same adjustment to the section titles in the list of Invariant Sections in the license notice of the combined work.

In the combination, you must combine any sections Entitled "History" in the various original documents, forming one section Entitled "History"; likewise combine any sections Entitled "Acknowledgements", and any sections Entitled "Dedications". You must delete all sections Entitled "Endorsements".

COLLECTIONS OF DOCUMENTS

You may make a collection consisting of the Document and other documents released under this License, and replace the individual copies of this License in the various documents with a single copy that is included in the collection, provided that you follow the rules of this License for verbatim copying of each of the documents in all other respects.

You may extract a single document from such a collection, and distribute it individually under this License, provided you insert a copy of this License into the extracted document, and follow this License in all other respects regarding verbatim copying of that document.

AGGREGATION WITH INDEPENDENT WORKS

A compilation of the Document or its derivatives with other separate and independent documents or works, in or on a volume of a storage or distribution medium, is called an "aggregate" if the copyright resulting from the compilation is not used to limit the legal rights of the compilation's users beyond what the individual works permit. When the Document is included in an aggregate, this License does not apply to the other works in the aggregate which are not themselves derivative works of the Document.

If the Cover Text requirement of section 3 is applicable to these copies of the Document, then if the Document is less than one half of the entire aggregate, the Document's Cover Texts may be placed on covers that bracket the Document within the aggregate, or the electronic equivalent of covers if the Document is in electronic form. Otherwise they must appear on printed covers that bracket the whole aggregate.

TRANSLATION

Translation is considered a kind of modification, so you may distribute translations of the Document under the terms of section 4. Replacing Invariant Sections with translations requires special permission from their copyright holders, but you may include translations of some or all Invariant Sections in addition to the original versions of these Invariant Sections. You may include a translation of this License, and all the license notices in the Document, and any Warranty Disclaimers, provided that you also include the original English version of this License and the original versions of those notices and disclaimers. In case of a disagreement between the translation and the original version of this License or a notice or disclaimer, the original version will prevail.

If a section in the Document is Entitled "Acknowledgements", "Dedications", or "History", the requirement (section 4) to Preserve its Title (section 1) will typically require changing the actual title.

TERMINATION

You may not copy, modify, sublicense, or distribute the Document except as expressly provided for under this License. Any other attempt to copy, modify, sublicense or distribute the Document is void, and will automatically terminate your rights under this License. However, parties who have received copies, or rights, from you under this License will not have their licenses terminated so long as such parties remain in full compliance.

FUTURE REVISIONS OF THIS LICENSE

The Free Software Foundation may publish new, revised versions of the GNU Free Documentation License from time to time. Such new versions will be similar in spirit to the present version, but may differ in detail to address new problems or concerns. See <http://www.gnu.org/copyleft/>.

Each version of the License is given a distinguishing version number. If the Document specifies that a particular numbered version of this License "or any later version" applies to it, you have the option of following the terms and conditions either of that specified version or of any later version that has been published (not as a draft) by the Free Software Foundation. If the Document does not specify a version number of this License, you may choose any version ever published (not as a draft) by the Free Software Foundation.

ADDENDUM: How to use this License for your documents

To use this License in a document you have written, include a copy of the License in the document and put the following copyright and license notices just after the title page:

```
Copyright (c) YEAR YOUR NAME.  
Permission is granted to copy, distribute and/or modify this document  
under the terms of the GNU Free Documentation License, Version 1.2  
only as published by the Free Software Foundation;  
with the Invariant Section being this copyright notice and license.  
A copy of the license is included in the section entitled "GNU  
Free Documentation License".
```

If you have Invariant Sections, Front-Cover Texts and Back-Cover Texts, replace the "with...Texts." line with this:

```
with the Invariant Sections being LIST THEIR TITLES, with the  
Front-Cover Texts being LIST, and with the Back-Cover Texts being LIST.
```

If you have Invariant Sections without Cover Texts, or some other combination of the three, merge those two alternatives to suit the situation.

If your document contains nontrivial examples of program code, we recommend releasing these examples in parallel under your choice of free software license, such as the GNU General Public License, to permit their use in free software.

Novell

