

# Installation Quick Start

## SUSE Linux Enterprise Server 11

NOVELL® QUICK START CARD

Use the following procedures to install a new version of SUSE® Linux Enterprise Server 11. This document gives a quick overview about how to run through the default installation of a SUSE Linux Enterprise Server.

### Welcome to SUSE Linux Enterprise Server

For more detailed installation instructions and deployment strategies, see the SUSE Linux Enterprise Documentation at <http://www.novell.com/documentation/>.

### System Requirements

- Personal computer with a Pentium® III 500 MHz or higher processor (Pentium 4 2.4 GHz or higher or any AMD64 for Intel® EM64T processor recommended)
- 512 MB physical RAM (1 GB recommended)
- 2 GB available disk space (more recommended)
- 800 x 600 display resolution (1024 x 768 or higher recommended)

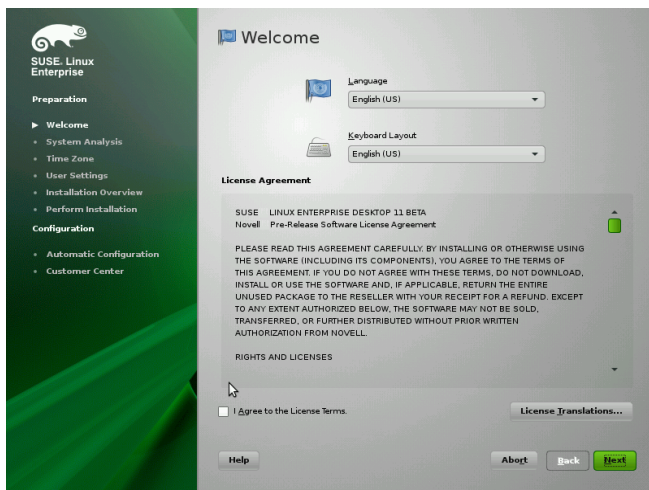
### Installing SUSE Linux Enterprise Server

Use these instructions if there is no existing Linux system on your machine or if you want to replace an existing Linux system.

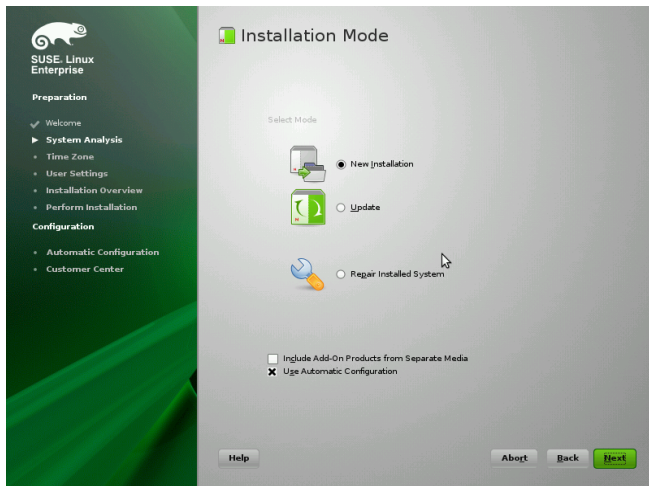
1. Insert the SUSE Linux Enterprise Server DVD into the drive, then reboot the computer to start the installation program.



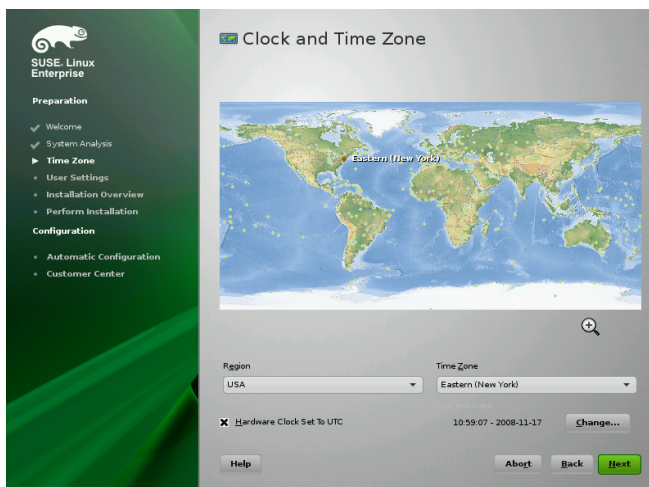
2. Select *Installation* on the boot screen, then press **Enter**. This loads the SUSE Linux Enterprise Server installation program and starts the installation in normal mode.



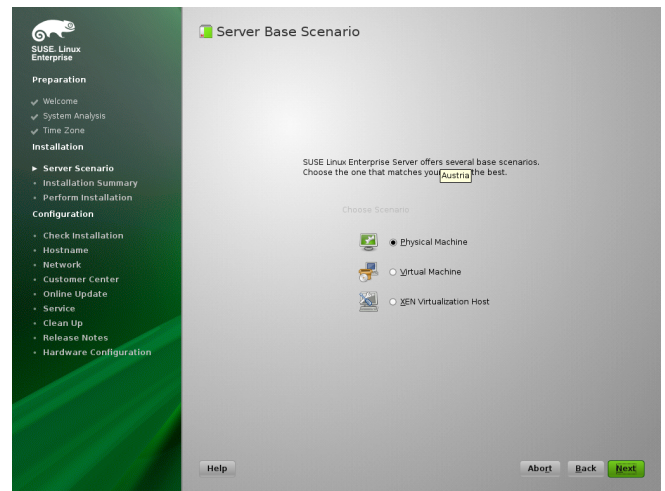
3. Select the language to be used during the installation and for the installed system.
4. Read the License Agreement and click *Yes, I Agree to the License Agreement*. Proceed with *Next*.



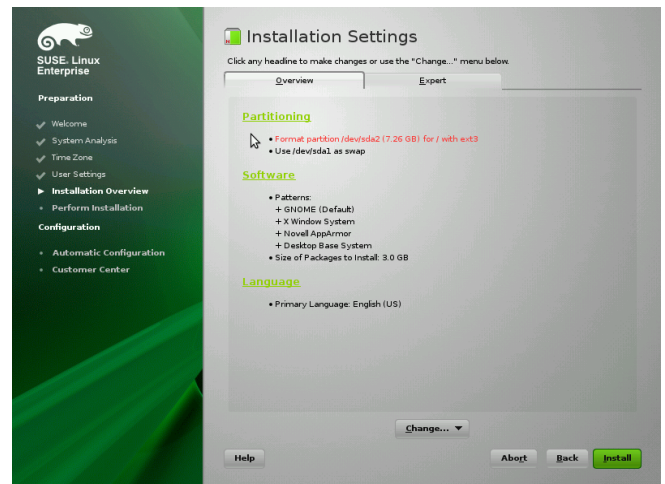
5. Decide if you want to accomplish a *New Installation* or an update from a previous version of SUSE Linux Enterprise. Proceed with *Next*.



6. Select the clock and time zone to use in your system. Proceed with *Next*.



7. Decide if you want to install as primary operating system on a *Physical Machine*, as a virtual guest inside a XEN machine by selecting *Virtual Machine*, or as a virtualization host that can run other virtual machines with the option *XEN Virtualization Host*. Proceed with *Next*.



8. Use the Installation Settings screen to view a number of proposed installation and partitioning options, then change your desired options if necessary.

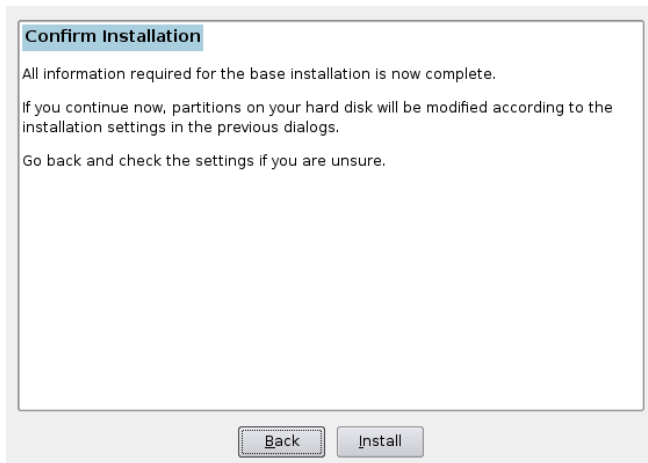
The *Overview* tab contains options that sometimes need manual intervention (in most common installation situations). The *Expert* tab contains special options, described below.

## IMPORTANT

If you do not make any changes to the Software selections, GNOME is installed as the default desktop environment. To install KDE, click *Software* and select *KDE*. Depending on your

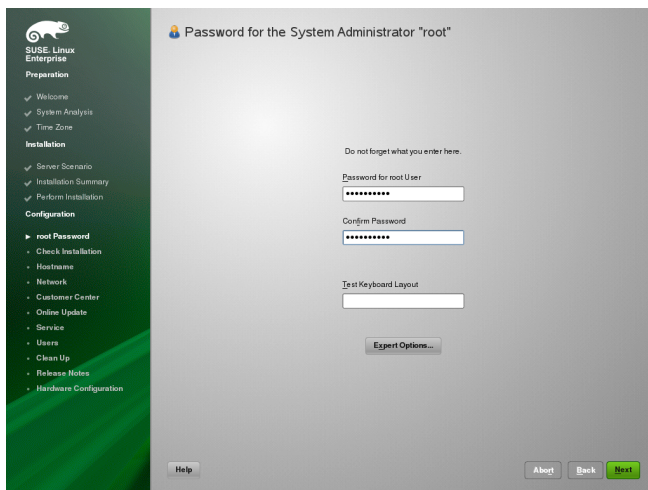
available disk space, you can choose to install both desktops. Proceed with *Install*.

- Click *Accept* to accept any license agreements.



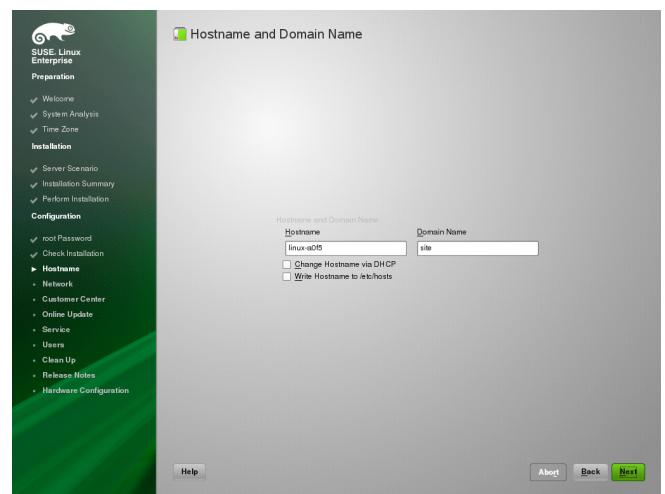
- Start the installation with *Install*.

After completing the basic system setup and the installation of all selected software packages, the SUSE Linux Enterprise Server installation boots into the new Linux system. After the reboot you will see the following screen:

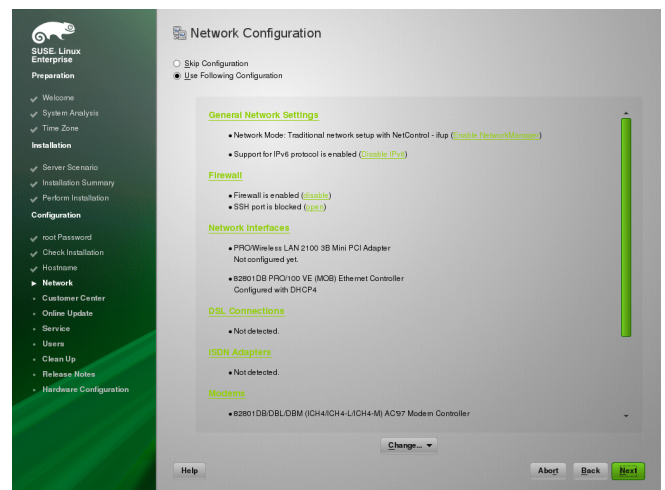


- Type a password for the system administrator account (called the `root` user).

You should never forget the `root` password! After you entered it here, the password cannot be retrieved. It can only be reset with administrative assistance. Proceed with *Next*.



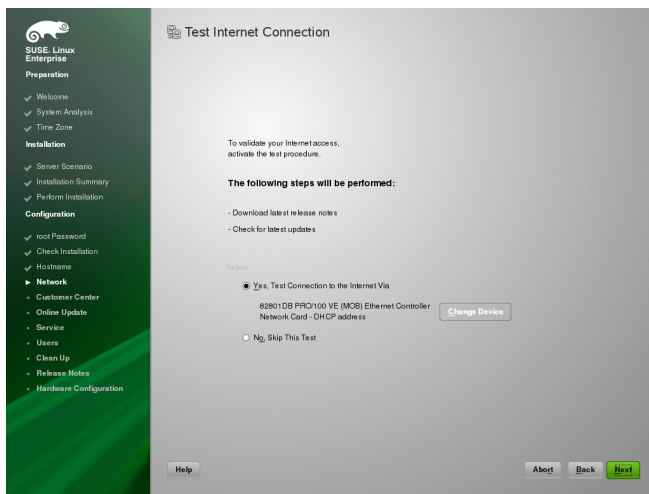
- Enter a name for this computer and the DNS domain that it belongs to. Proceed with *Next*.



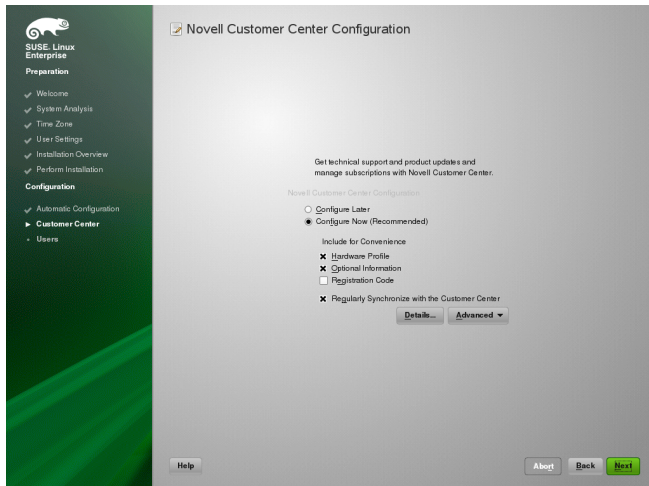
- In the Network Configuration screen, view or change the network connections of your system.

If you have network devices (for example, network or wireless cards, a DSL connection, ISDN adapter, or modem), it is a good idea to configure them now, because an Internet connection allows SUSE Linux Enterprise Server to retrieve any available updates and include them in the installation. Proceed with *Next*.



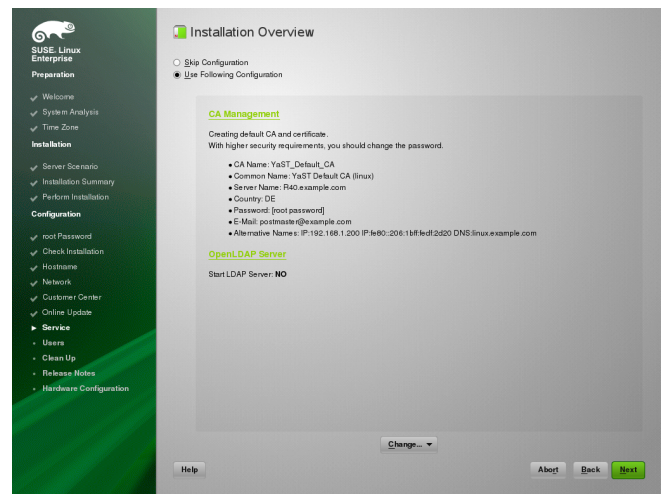


14. Test your Internet connection with *Yes, Test Connection to the Internet*. This option also checks for the latest SUSE Linux Enterprise Server release notes. Proceed with *Next*.
15. View the results of the test on the Running Internet Connection Test screen. Proceed with *Next*.

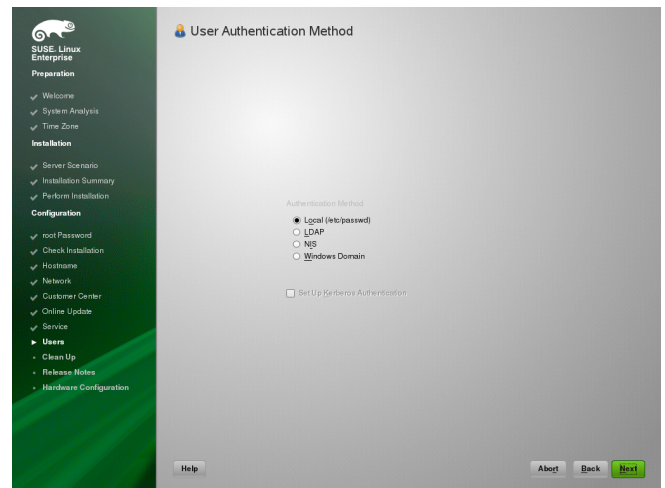


16. Enable on the Novell Customer Center Configuration screen your system for online updates with *Configure Now > Next > Continue*.

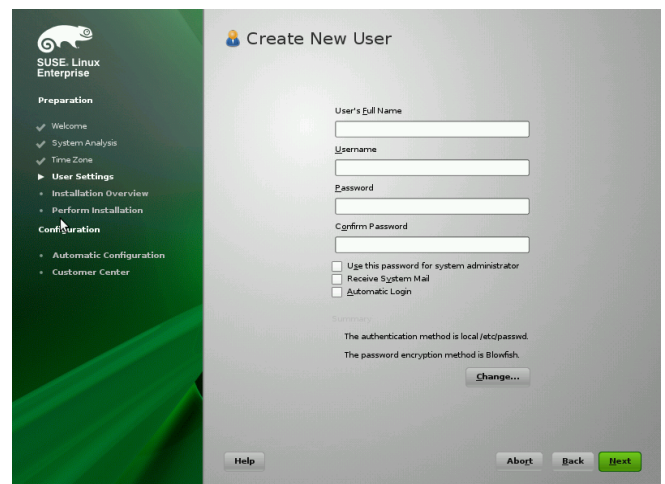
Click *Configure Later > Next* to skip this step and continue the installation. You can configure this option after the product has been installed. Proceed with *Next*.



17. By default, SUSE Linux Enterprise Server creates a certificate for the system. To disable this, click *Skip Configuration > Next*. Proceed with *Next*.



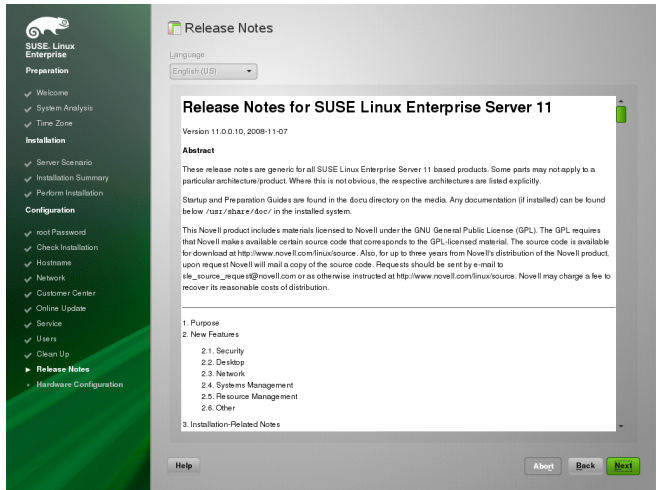
18. Select *Local (/etc/passwd)* in the User Authentication Method screen, unless instructed otherwise by your system administrator. Proceed with *Next*.



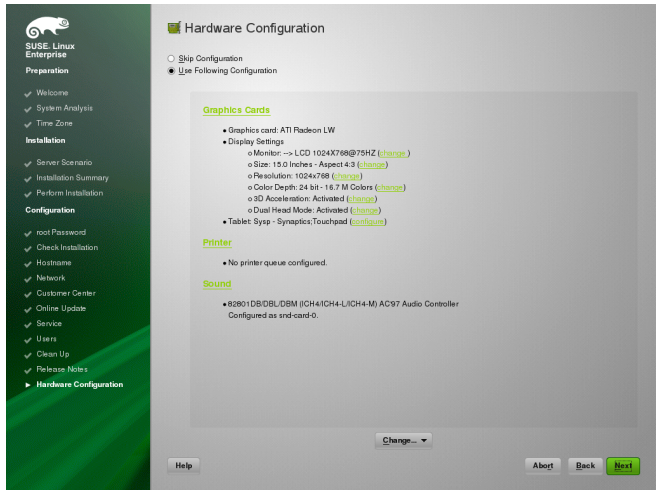
19. Type your first and last name in the *User's Full Name* field, your login name in the *Username* field, and your

password (as recommended by your system administrator) in the *Password* field.

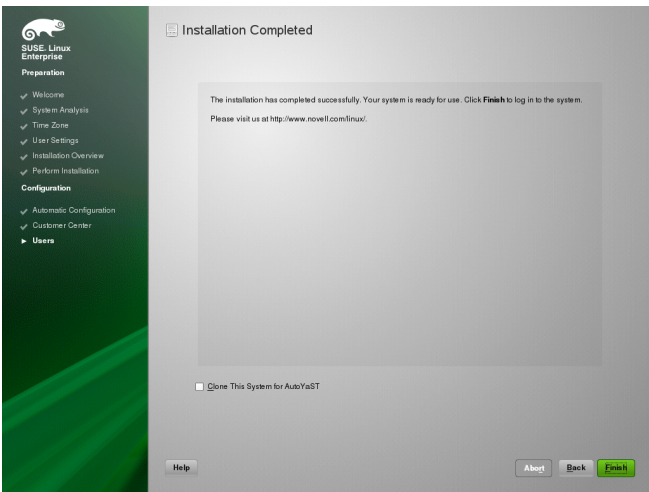
For security reasons, your password should be at least eight characters long and should contain both uppercase and lowercase letters and numbers. The maximum length for passwords is 72 characters, and passwords are case sensitive. Proceed with *Next*.



20. View the Release Notes after the system configuration has completed. Proceed with *Next*.



21. Use the Hardware Configuration screen to view or configure your graphics card and other hardware devices. Proceed with *Next*.



22. On the Installation Completed screen, click *Finish* to close the SUSE Linux Enterprise Server installation and continue to the login screen.
23. Click on your username, and type your password in the *Password* field, then press *Enter*.

## Legal Notice

All content is copyright © 2006- 2009 Novell, Inc.

This manual is protected under Novell intellectual property rights. By reproducing, duplicating or distributing this manual you explicitly agree to conform to the terms and conditions of this license agreement.

This manual may be freely reproduced, duplicated and distributed either as such or as part of a bundled package in electronic and/or printed format, provided however that the following conditions are fulfilled:

That this copyright notice and the names of authors and contributors appear clearly and distinctively on all reproduced, duplicated and distributed copies. That this manual, specifically for the printed format, is reproduced and/or distributed for noncommercial use only. The express authorization of Novell, Inc must be obtained prior to any other use of any manual or part thereof.

For Novell trademarks, see the Novell Trademark and Service Mark list <http://www.novell.com/company/legal/trademarks/tmlist.html>. Linux\* is a registered trademark of Linus Torvalds. All other third party trademarks are the property of their respective owners. A trademark symbol (®, ™ etc.) denotes a Novell trademark; an asterisk (\*) denotes a third party trademark.

All information found in this book has been compiled with utmost attention to detail. However, this does not guarantee complete accuracy. Neither Novell, Inc., SUSE LINUX Products GmbH, the authors, nor the translators shall be held liable for possible errors or the consequences thereof.

Novell®

