

# Installation Quick Start

## SUSE Linux Enterprise Desktop 11

NOVELL® QUICK START CARD

Use the following procedures to install a new version of SUSE® Linux Enterprise Desktop 11. This document gives a quick overview about how to run through the default installation of a SUSE Linux Enterprise Desktop.

### Welcome to SUSE Linux Enterprise Desktop

For more detailed installation instructions and deployment strategies, see the SUSE Linux Enterprise documentation at <http://www.novell.com/documentation/>.

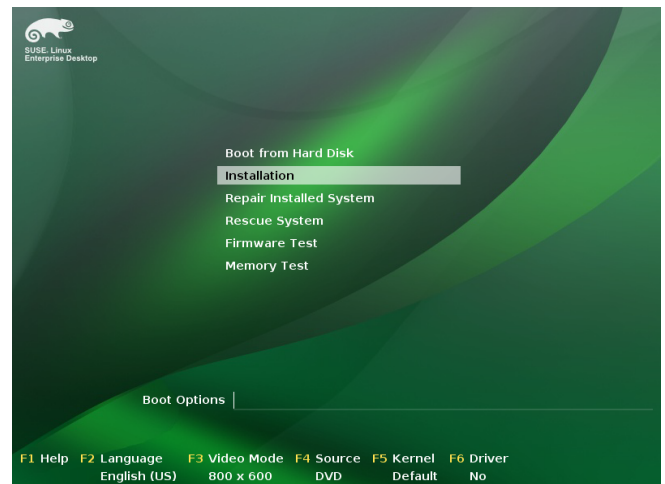
### System Requirements

- Personal computer with a Pentium® III 500 MHz or higher processor (Pentium 4 2.4 GHz or higher or any AMD64 for Intel® EM64T processor recommended)
- 512 MB physical RAM (1 GB recommended)
- 3 GB available disk space (more recommended)
- 800 x 600 display resolution (1024 x 768 or higher recommended)

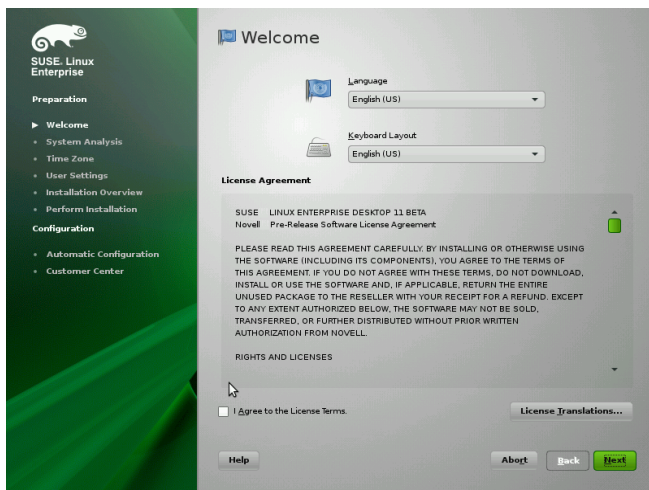
### Installing SUSE Linux Enterprise Desktop

Use these instructions if there is no existing Linux system on your machine or if you want to replace an existing Linux system.

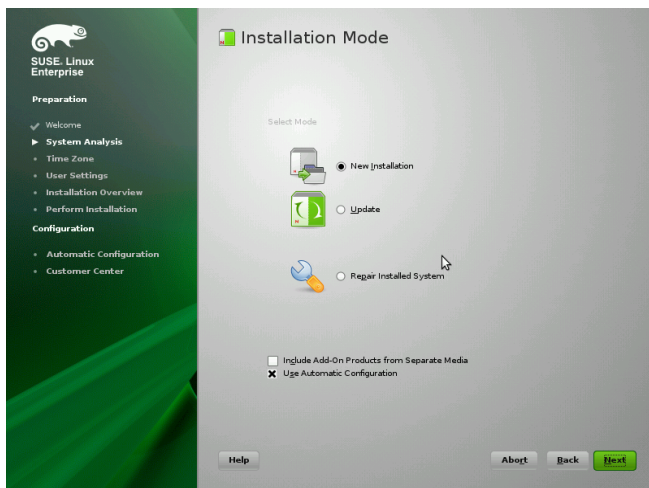
1. Insert the SUSE Linux Enterprise Desktop DVD into the drive, then reboot the computer to start the installation program.



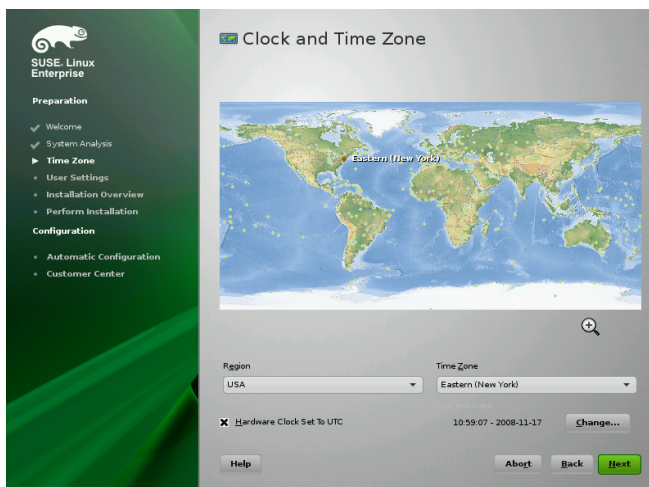
2. Select *Installation* on the boot screen and press Enter. This loads the SUSE Linux Enterprise Desktop installation program and starts the installation in normal mode.



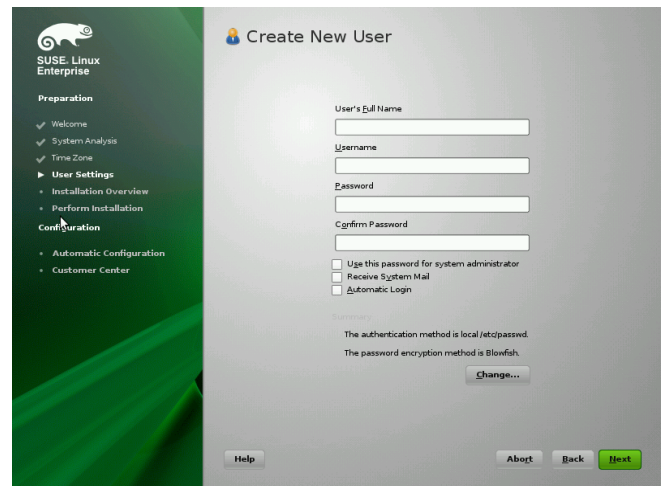
3. Select the language to be used during the installation and for the installed system.
4. Read the License Agreement and click *Yes, I Agree to the License Agreement*. Proceed with *Next*.



5. Select if you want to accomplish a *New Installation* or an update from a previous version of SUSE Linux Enterprise. Proceed with *Next*.

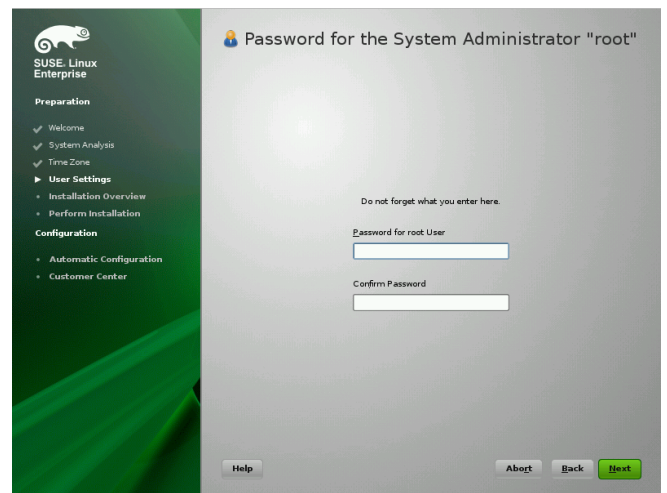


6. Select the clock and time zone to use in your system. Proceed with *Next*.



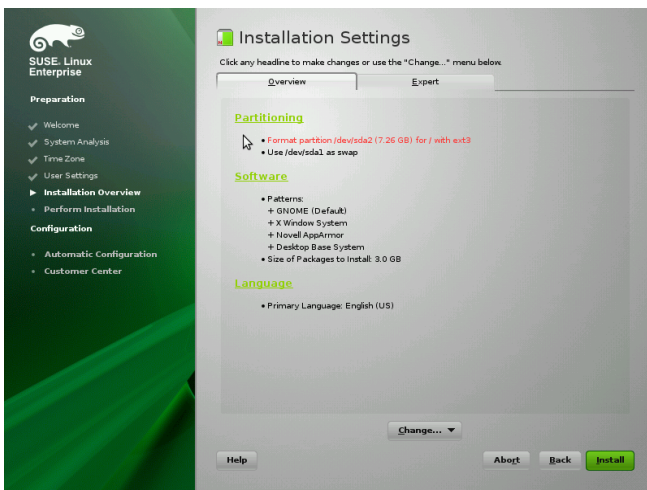
7. Type your first and last name in the *User's Full Name* field, your login name in the *Username* field, and your password (as recommended by your system administrator) in the *Password* field.

For security reasons, your password should be at least eight characters long and should contain both upper-case and lowercase letters and numbers. The maximum length for passwords is 72 characters, and passwords are case sensitive. Proceed with *Next*.



8. Type a password for the system administrator account (called the `root` user).

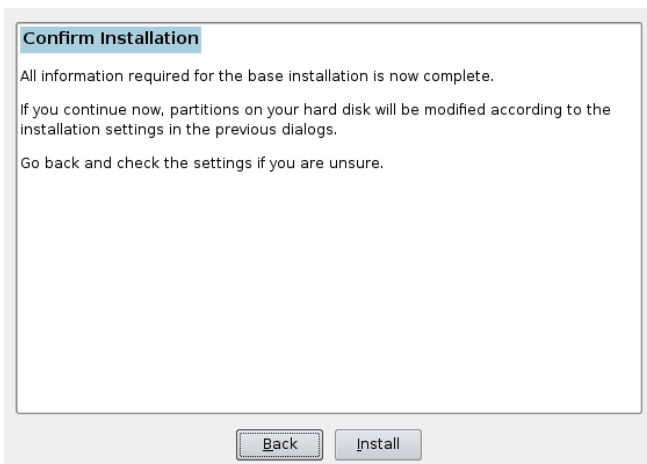
You should never forget the `root` password. After you enter it here, the password cannot be retrieved. It can only be reset with administrative assistance. Proceed with *Next*.



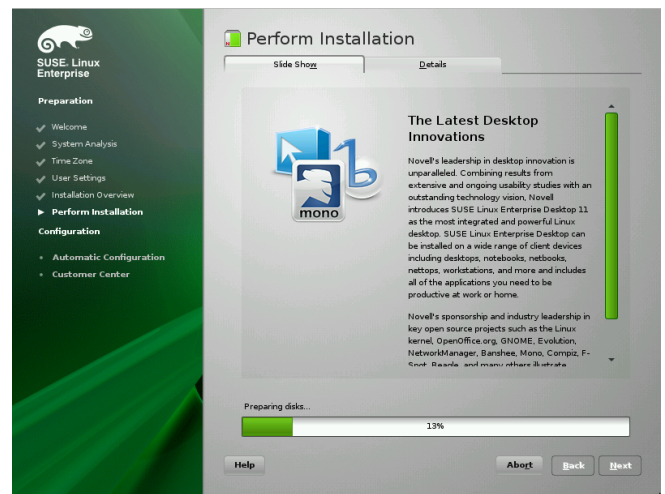
9. Use the Installation Settings screen to view a number of proposed installation and partitioning options, then change your desired options if necessary.

The *Overview* tab contains options that sometimes need manual intervention (for example, partitioning and software). The *Expert* tab contains special options, described below.

10. Click *Accept* to accept any license agreements that might show up. You will see the following screen:

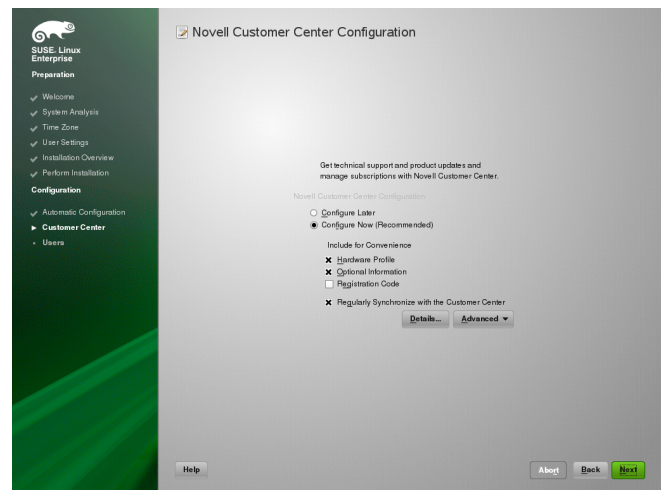


11. Click *Install* to start the installation.



After completing the basic system setup and the installation of all selected software packages, the SUSE Linux Enterprise Desktop installation boots into the new Linux system, after which you can create users, configure the hardware, and set up system services.

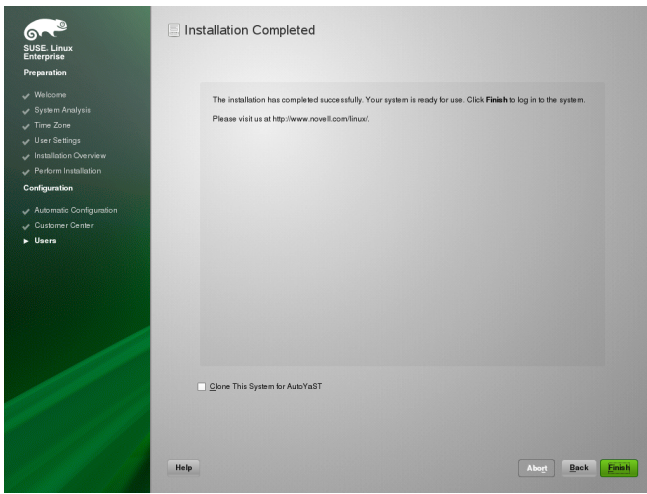
12. Click *Configure Now* > *Next* > *Continue* to enable your system for online updates.



To skip this step, click *Configure Later* > *Next* and continue with the installation. You can configure this option after the product has been installed.

13. Click *Finish* on the Installation Completed screen to close the SUSE Linux Enterprise Desktop installation and continue to the login screen.





14. Click on your username, and type your password in the *Password* field. Press Enter to login.

## Legal Notice

All content is copyright © 2006- 2009 Novell, Inc.

This manual is protected under Novell intellectual property rights. By reproducing, duplicating or distributing this manual you explicitly agree to conform to the terms and conditions of this license agreement.

This manual may be freely reproduced, duplicated and distributed either as such or as part of a bundled package in electronic and/or printed format, provided however that the following conditions are fulfilled:

That this copyright notice and the names of authors and contributors appear clearly and distinctively on all reproduced, duplicated and distributed copies. That this manual, specifically for the printed format, is reproduced and/or distributed for noncommercial use only. The express authorization of Novell, Inc must be obtained prior to any other use of any manual or part thereof.

For Novell trademarks, see the Novell Trademark and Service Mark list <http://www.novell.com/company/legal/trademarks/tmlist.html>. Linux\* is a registered trademark of Linus Torvalds. All other third party trademarks are the property of their respective owners. A trademark symbol (®, ™ etc.) denotes a Novell trademark; an asterisk (\*) denotes a third party trademark.

All information found in this book has been compiled with utmost attention to detail. However, this does not guarantee complete accuracy. Neither Novell, Inc., SUSE LINUX Products GmbH, the authors, nor the translators shall be held liable for possible errors or the consequences thereof.

Novell®

