

# GNOME Quick Start

## SUSE Linux Enterprise Desktop 11 SP1

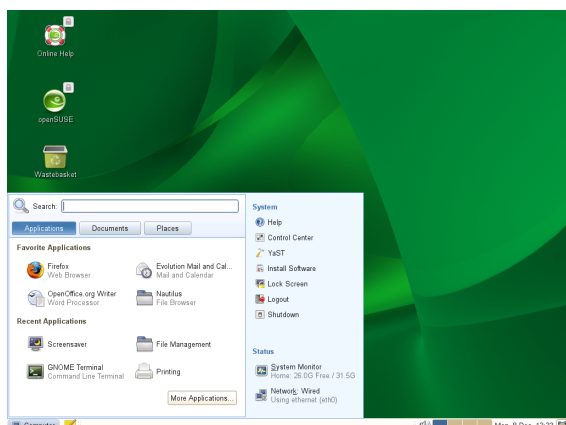
NOVELL® QUICK START CARD

SUSE® Linux Enterprise Desktop provides the tools that Linux\* users require in their daily activities. It comes with an easy-to-use graphical environment, the GNOME\* desktop, that communicates with the underlying Linux system, to access and manage files, folders, and programs. SUSE Linux Enterprise Desktop provides an integrated suite of applications that meet all professional requirements to perform tasks in a business environment. The OpenOffice.org suite, which allows you to edit and save files in a number of formats, is also included. Because the office suite is available for several operating systems, you can use the same data across different computing platforms.

## Getting Started

When you start your system, you are usually prompted to enter your username and password. If someone else installed your system, check with your system administrator for your username and password.

After logging in to GNOME for the first time, you see the GNOME desktop, offering the following basic elements:



**Desktop Icons:** Access programs and features on your system by double-clicking an icon. Right-click an icon to get additional menus and options. By default, the desktop features several key icons, including your personal *Home* folder and a trash can for deleted items. Other icons representing devices on your computer, such as CD drives or USB flash disks, may also be present on the desktop, and you can add as many icons on your desktop as you like. If you double-click your *Home* folder, the Nautilus file manager starts and displays the contents of your home directory.

**Bottom Panel:** The desktop includes a panel at the bottom of the screen. This panel contains the *Computer* menu, the system tray, and a taskbar to display icons for all currently running applications. You can also add applications and applets to the panel for easy access.

**Main Menu:** Click *Computer* on the left side of the bottom panel to open the main menu. Commonly used applications appear in the main menu along with recently used applications. Click the *Documents* button to display your recent documents, or click the *Places* button to display your favorite places (such as your home directory, your

desktop, or available network servers). Click *More Applications* to access additional applications, listed in categories. Use the options on the right to access help, open the GNOME Control Center, run YaST, install additional software, lock your screen, log out of the desktop, or shutdown your computer.

**System Tray:** The right side of the bottom panel shows some smaller icons, including the system clock that displays the current date and time, the volume control, and icons for several other helper applications.

**Taskbar:** By default, all applications running on the current desktop are displayed in the taskbar (the area in the middle of the panel between the Computer button and the system tray). You can access these applications by clicking its name in the taskbar. Right-click its name to see options for moving, restoring, or minimizing the window.

**Desktop Menu:** Right-click an empty spot on the desktop to display a menu with various options. Click *Create Folder* to create a new folder. Use *Create Launcher* to create a launcher icon for an application. Provide the name of the application and the command for starting it, then select an icon to represent it. You can also change the desktop background, open a terminal, create a document, and align desktop icons.

## Modifying Desktop Panels

The bottom panel can be customized to meet your individual needs, and additional panels can be added and configured to further personalize your desktop.

To add a new panel, right-click a blank space in the bottom panel and select *New Panel*. To delete a panel, right-click a blank space in the panel and select *Delete This Panel*. SUSE Linux Enterprise Desktop requires that at least one panel is left on the desktop.

## Adding and Removing Panel Icons

1. Right-click a blank space on the panel and select *Add to Panel*.
2. Browse to the desired program and double-click it to add it to the panel.
3. To remove a program icon from a panel, right-click its icon in the panel and select *Remove From Panel*.

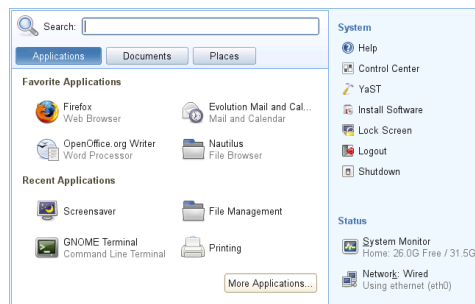
## Starting Programs

Start programs from the *Main Menu* or from the command line, using a shell or the *Run Command*. Additionally, you can start programs from the desktop or the panel by left-clicking the program icon once.

## Using the Main Menu

To run a program in SUSE Linux Enterprise Desktop, click *Computer* on the panel to open the main menu screen. If

the program you want does not appear in the main menu screen, click *More Applications* to view a list of all available applications grouped in categories. You can also limit the list to show only applications with a specific name by entering all or part of the name into the *Filter* field. Click an entry in the list to start the corresponding program.



You can also add an icon to your panel that opens a more traditional version of the main menu. Right-click a blank space on the panel, select *Add to Panel*, then double-click *Traditional Main Menu*.

If you already know the name of an application but are not sure how to start it from the main menu, use the *Search* field in the main menu. Click *Computer*, type a portion of the application name in the *Search* field, then press *Enter*. If the application is installed on your system, the name of the application appears in the *Desktop Search* dialog box. Click the name to start the program.

## Using the Run Application Dialog

Press *Alt + F2* to open the *Run Application* dialog. Type a command, for example, *banshee*, and press *Enter* or click *Launch* to start the application. The command to start the application is often (but not always) the application name written in lowercase.



## Handling Media

If you insert a CD or DVD into your drive or plug in a pluggable device (for example, a USB stick or removable hard disk), GNOME opens Nautilus and shows the content of the media.

## Customizing Your Desktop

You can easily add, delete, and create shortcut icons on your desktop. You can also change icon properties and the desktop background to suit your needs.

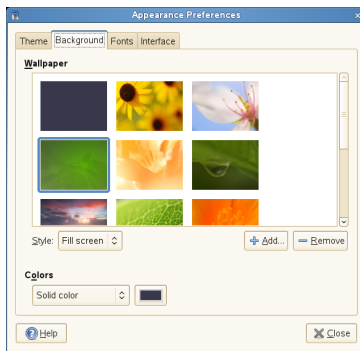
### Adding Program Icons to Your Desktop

1. Click *Computer*.
2. Browse to the desired program.
3. Click and drag the icon to the desktop and position it as desired.

To delete an icon from your desktop, simply click the program icon and press the **Delete** key on your keyboard.

### Changing the Desktop Background

1. Right-click the background.
2. Select *Change Desktop Background*.

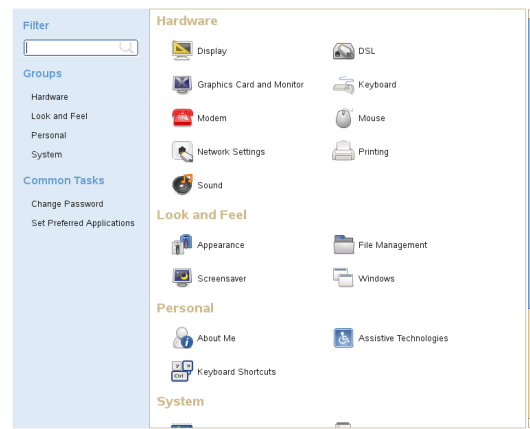


3. To select a wallpaper from the pre-installed images, browse to and select the desired image. After you select it, the background changes automatically.
4. To add an image, select *Add*, browse to the desired image, then click *Open*.
5. To display a colored background, select *No Wallpaper* from the top of the list; then, from *Colors*, select the fill pattern and the desired colors.
6. Click *Close*.

### Using the GNOME Control Center

In addition to letting you change individual desktop elements, GNOME lets you extensively personalize your desktop. You can find more settings to adjust the overall appearance and behavior of your desktop in the GNOME Control Center. There, you can also change fonts, keyboard and mouse configurations, regional and language settings, parameters for your Internet and network usage, and more.

To start the Control Center, click *Computer*, then click *Control Center* on the right of the main menu.



### Applying Desktop Effects

If your computer supports a 3D graphics card with Xgl, you can use graphical effects like turning your desktop into a rotating 3D cube, enabling translucent or transparent windows, and zooming in and out of the desktop screen. You can also use other window effects such as shadows, fading, and transformations. If you do not have a 3D graphics card, some effects may be disabled or reduce the performance of your system. If the performance of your system is too low, disable the compositing effect for your current session with **Alt + Shift + F12**.



To configure the effects on your desktop, proceed as follows:

1. Start the personal settings window as described in Section “Using the GNOME Control Center”.
2. Select *Look and Feel* → *Desktop Effects* and choose *Enable Desktop Effects*. If your graphic card does not support 3D, you will be notified.
3. Select the effects in one of the tabs.

### Using Virtual Desktops

The desktop environment allows you to organize your programs and tasks on several virtual desktops. If you often run a lot of programs simultaneously, this minimizes the number of windows to arrange on your screen. You might, for example, use one desktop for e-mailing and calendaring and another for word processing and graphics applications.

## Moving an Application to Another Virtual Desktop

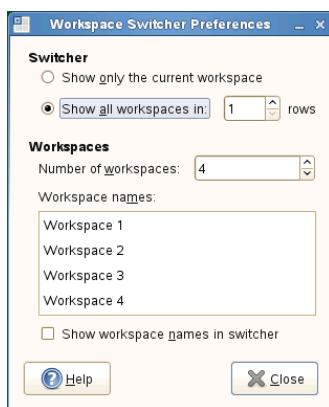
You can display a running application on one or all virtual desktops, or move it to other desktops.

1. Open the application.
2. Right-click the title bar of the application.
3. Click *Move to Another Workspace*.
4. Select the desktop on which to place the application.
5. To switch between desktops, click the desired desktop in the pager in the panel.

## Adding Additional Virtual Desktops

Some users might need more desktops than are provided by default. To add additional desktops:

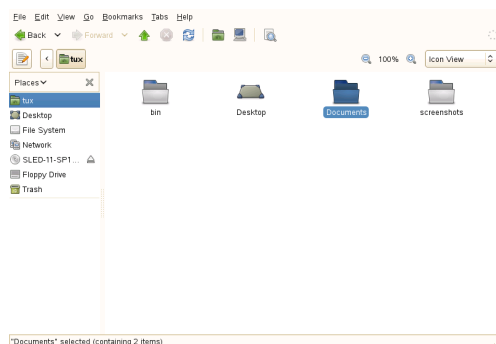
1. Right-click the pager in the panel and select *Preferences*. A configuration dialog appears:



2. Decrease or increase the *Number of Workspaces*.
3. If you want to change the names of the desktops double click on the list entries and enter the new names.

## Using the File Manager

Use the Nautilus File Manager to create and view folders and documents, run scripts, and create CDs of your data. To open Nautilus, double-click your home directory icon on the desktop. You see the contents of your home directory.



The elements of the Nautilus window include the following:

**Menu** Lets you perform most tasks.

**Toolbar** Lets you quickly navigate among files and folders, and provides access to files and folders.

**Location Bar** Lets you locate files, folders, and URI sites. The button on the left side lets toggles between the button based or text based display.

**Side Pane** Lets you navigate or display information about the selected file or folder. Use the drop-down list to customize what is shown in the pane. The list includes ways to view information about files, perform actions on files, attach emblems to files, view a history of recently visited sites, and display your files in the tree system.

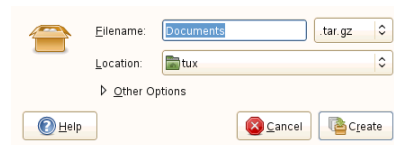
**View Pane** Displays folders and files. Use the options on the *View* menu to increase or decrease the size of content in the view pane and to display items as a list or as icons.

**Status Bar** Displays the number of items in a folder and gives the available free space. When a file is selected, the status bar displays the filename and size.

## Archiving Folders

If you have files you have not used recently but want to keep on your computer, you can compress the files into a tape archive (TAR) format.

1. In the Nautilus view pane, right-click the folder you want to archive and select *Compress*.



2. Accept the default archive filename or provide a new name.
3. Select a file extension from the drop-down list. Use `tar.gz` for the most common archive form.
4. Specify a location for the archive file, then click *Create*.

To extract an archived file, right-click the file and select *Extract Here*.

## Using Bookmarks

Use the Nautilus bookmarks feature to mark your favorite folders.

1. Open the folder you want to create a bookmark for.
2. Click *Bookmarks* → *Add Bookmark*. The bookmark is added to the list, with the folder name as the bookmark name.
3. To select an item from your bookmarks list, click *Bookmarks*, then click the desired bookmark in the list.

You can also organize your bookmarks list by clicking *Bookmarks* → *Edit Bookmarks* and making your selections in the dialog box.



To change the order of your bookmarks, click a bookmark shown in the *Edit Bookmarks* dialog and drag it to the desired location.

## Browsing the Internet with Firefox

Firefox\* is becoming the Web browser of choice. It has all the familiarity of other browsers, plus added features such as security and privacy tools.



To start Firefox, click *Computer* → *Firefox Web Browser*. When starting Firefox for the first time, you need to agree with its license agreement and click *OK*.

With features like tabbed browsing, pop-up window blocking, and download and image management, Firefox combines the latest Web technologies. Its easy access to different search engines helps you find the information you need. Enter a URL in the location bar to start browsing.

To open a new empty tab in Firefox, press **Ctrl + T** or the “+” button next to the last tab. Type a new URL to browse. To open a link in a new tab, click the link with your middle mouse button. Right-click a tab to access more tab options. You can create a new tab, reload one or all existing tabs, or close a single tab or all tabs. You can also change the sequence of the tabs by dragging and dropping them to a new position.

## Finding Information

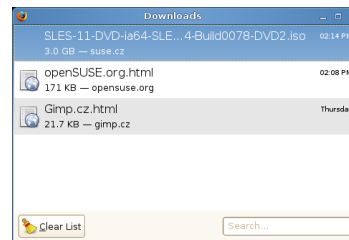
1. To start a search on the Web type your search keywords in the integrated search box on the right of the location bar, then press **Enter**. The results are displayed in the active window or tab.
2. To use a different search engine than the default, click the icon in the search box to open a list of other search engines.

3. Click the desired engine, then press **Enter** to start the search.

You can also search the current Web page for keywords. To do so, press **Ctrl + F** to open the *Find* bar at the bottom of the window. Enter your search keyword there and use the buttons to the right of the box to search in different directions or to select all hits in the text.

## Downloading Files from the Web

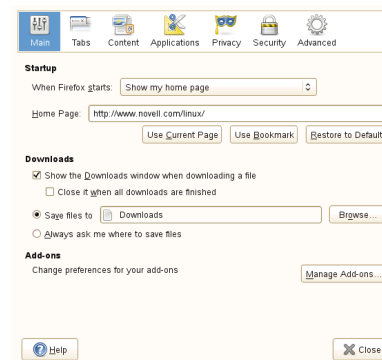
If you download a file with Firefox, the Firefox download manager starts and saves this file to the folder configured in Firefox *Preferences*. By default, your desktop is the destination folder for downloaded files. Firefox shows your finished downloads in the *Downloads* window.



You can open the downloaded files directly from the *Downloads* window or from the destination folder. To clean up the history of downloaded files, click *Clean Up*.

## Configuring Preferences

To adjust the default download folder or to activate or modify the pop-up blocking feature, click *Edit* → *Preferences*.



Here you can also configure many other settings such as appearance, language, privacy, and tab options. Click the icons and set the options on each page according to your preferences. Click *Close* to apply the changes.

## Managing Passwords

GNOME allows you to store your passwords and encryption keys in a *keyring*. This is useful, if you want to store passwords for different web sites.

To create a new keyring, proceed as follows:



1. Press **Alt + F2** and enter `seahorse`.
2. Select **File** → **New...**
3. Choose **Password Keyring** and proceed with **Continue**.
4. Enter a name for your keyring and a dialog box opens.
5. Choose your **Location** and enter your passwords and confirm with **Create**.

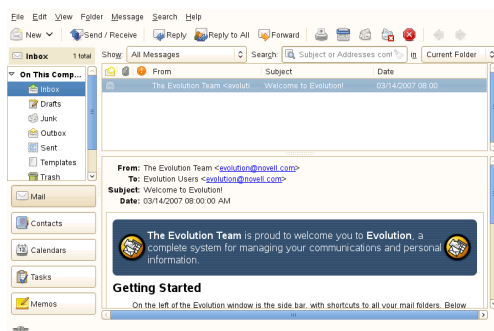
You can create as many keyrings as you like. For example, you can create one for private and one for business. To store your passwords in your keyring, proceed as follows:

1. Press **Alt + F2** and enter `seahorse`.
2. Select **File** → **New...**
3. Choose **Stored Password** and proceed with **Continue**.
4. Select your keyring, enter description and password.
5. Finish with **Add**.

## E-Mailing and Calendaring

For reading and managing your mail and events, SUSE Linux Enterprise Desktop offers you Evolution™, a groupware program that makes it easy to store, organize, and retrieve your personal information.

Evolution seamlessly combines e-mail, a calendar, an address book, and a task list in one easy-to-use application. With its extensive support for communications and data interchange standards, Evolution can work with existing corporate networks and applications, including Microsoft® Exchange.



To start Evolution, click **Computer** → **More Applications** → **Office** → **Evolution Mail and Calendar**.

The first time you start it, Evolution prompts you with a few questions as it sets up a mail account and helps you import mail from your old mail client. It shows you how many new messages you have and lists upcoming appointments and tasks, as well as the current weather and news from news feeds. The calendar, address book, and mail tools are available in the shortcut bar on the left.

Press **Ctrl + N** to open a new item for whatever part of Evolution you are working in. In mail, this creates a new message. If you are in the address book, **Ctrl + N** creates a

new contact card, and in the calendar, it creates a new appointment.

For more information on using Evolution, click **Help** → **Contents** in any Evolution window.

## Instant Messaging with Pidgin

Pidgin is a multiprotocol instant messaging (IM) client. It is compatible with AOL® Instant Messenger (AIM), Google Talk, GroupWise® Messenger, ICQ, IRC, MSN Messenger, Jabber/XMPP, Yahoo!®, and other networks.

With Pidgin, you can log in to multiple accounts on multiple IM networks simultaneously. Pidgin also supports many features of the various networks, such as file transfer, away messages, and typing notification.

To start Pidgin, click **Computer** → **More Applications** → **Communicate** → **Pidgin**, or alternatively press **Alt + F2** and enter `pidgin`.

To add an account to Pidgin, select **Accounts** → **Manage Accounts** from the **Buddy List**. Click **Manage Accounts**, click **Add**, select the protocol you want, and type your login information in the appropriate fields. Activate the account by checking the **Enabled** checkbox in the account list.

Add contacts by clicking **Buddies** → **Add Buddy**. An assistant appears to help with creation. However, you must be online and connected to the selected messaging service to add a contact to your list.

To start a chat, double-click the desired contact and type your message in the lower part of the chatting window. Press **Enter** to send the message. The upper part of the window displays the messages you have sent and received.

## Starting OpenOffice.org

The OpenOffice.org office suite offers a complete set of office tools, including word processing, spreadsheet, presentation, vector drawing, and database components. Because OpenOffice.org is available for a number of operating systems, you can use the same data across multiple platforms.

To start OpenOffice.org, click **Computer** → **OpenOffice.org Writer**. To create a new document, click **File** → **New**, then choose the type of document you want to create. To open an existing document, click **Open**, then select the file you want from the file system.

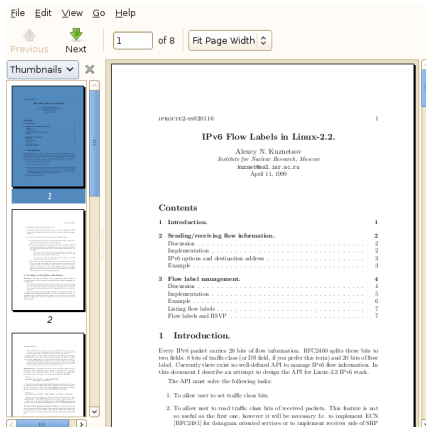
## Viewing PDF Files and Other Documents

Documents that need to be shared or printed across platforms are often distributed as PDF (Portable Document Format) files. PDF files can be created using the OpenOffice.org suite or other applications. The GNOME PDF viewer

is called Evince. It can be used to view PDFs and many other document formats, like PostScript, DjVu, DVI, and multi-page TIFFs.

To start Evince, press **Alt + F2** and enter `evince` or click **Computer → More Applications → Office → Evince**.

1. Click **Computer → More Applications → Office → Evince** or press **Ctrl + F2** and enter `evince`.
2. To view a PDF file, click **File → Open**, locate the desired PDF file, then click **Open**.



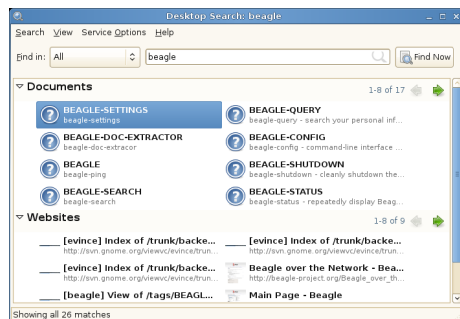
3. Use the navigation icons at the top of the window to navigate through the document. If your PDF document provides bookmarks, you can access them in the left panel of the viewer.

## Searching for Data

GNOME provides more than one application for finding data on your computer or in the file system. The following subsections describe two.

### Using Desktop Search

To locate files on your computer, click **Computer**, enter your search terms in the **Search** field, then press **Enter**. The results are displayed in the **Desktop Search** dialog box.



You can use the results lists to open a file, forward it via e-mail, or display it in the file manager. Simply right-click an item in the results list and select the option you want. The options available for an item depend on the type of file it is. Clicking a file in the list displays a preview of the file and

information such as the title, path, and date the file was last modified or accessed.

Use the **Find In** menu to limit your search to files in a specific location, such as your address book or Web pages, or to display only a specific type of file in your results list. The **View** menu lets you sort the items in your results list according to name, relevance, or the date the file was last modified.

You can also access **Desktop Search** by clicking **Computer → More Applications → System → Search**.

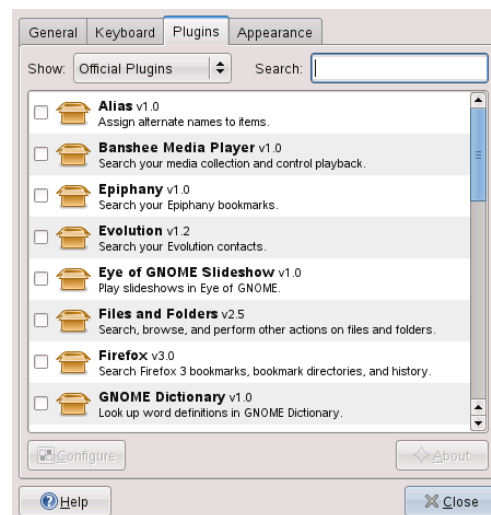
## Using GNOME Do

GNOME Do describes itself as an “intelligent launcher that makes performing common tasks on your computer simple and efficient.” With many plug-ins it is easily extensible.

GNOME Do allows you to perform specific actions. For example, if you type `b` it displays you Banshee, the music player:



To customize GNOME Do to your needs, select the arrow button on the upper-right corner of the window and select **Preferences**. It gives you a list of many plug-ins to search for mails in Evolution or listen to your music.

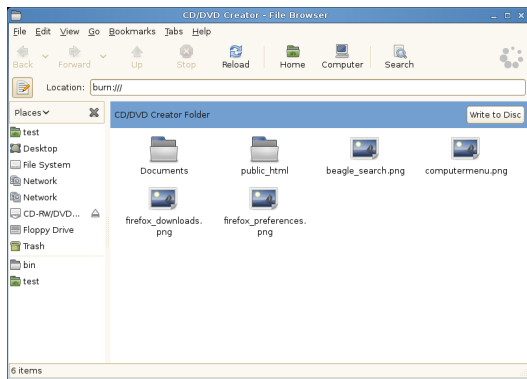


## Creating a CD or DVD

If your system has a CD or DVD read/write drive, you can use the Nautilus file manager to burn CDs and DVDs.

1. Click **Computer → More Applications → System → CD/DVD Creator**, or just insert a blank disk.

- Copy the files you want to put on the CD or DVD into the Nautilus *CD/DVD Creator* window.



- Click *Write to Disk*.
- Modify the relevant information in the *Write to Disk* dialog box, or accept the default values, then click *Write*. The files are burned to the disk. This could take a few minutes, depending on the amount of data being burned and the speed of your burner.

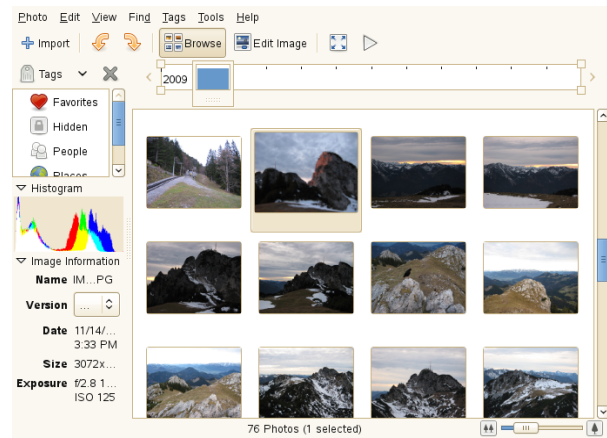
You can also use Brasero or Banshee to burn audio and data CDs.

## Managing Your Digital Image Collection

F-Spot is a management tool for your collection of digital images, tailored for the GNOME desktop. It allows you to assign different tags to your images in order to categorize them, and offers various image editing options. For example, you can remove red-eye, crop, and adjust brightness and colors. F-Spot supports all important image formats, including JPEG, PNG, TIFF, and several vendor specific RAW formats.

You can import photos from your hard drive, your digital camera, or your iPod. You can also use F-Spot to create photo CDs, generate a Website gallery, or export your photos to your Flickr, 23, Picasa Web, or SmugMug account.

To access F-Spot, click *Computer* → *F-Spot Photo Browser* or press **Alt + F2** and enter `f-spot`. The first time you run F-Spot, you must define the location from where you want to import images into your collection. If you already have a collection of images stored on your hard drive, enter the path to the directory and (optionally) include subfolders. F-Spot imports these images into its database.



Thumbnails of your images are displayed in the right part of the window, and detailed information for a selected image is displayed in a sidebar to the left. By default, your photos are displayed in reverse-chronological order, so your newest photos are always at the top. You can sort your photos in chronological order or reverse-alphabetical order by clicking *View* → *Reverse Order*.

A menu bar at the top of the window allows you to access the main menus. A toolbar below offers several different functions depicted by a matching icon.

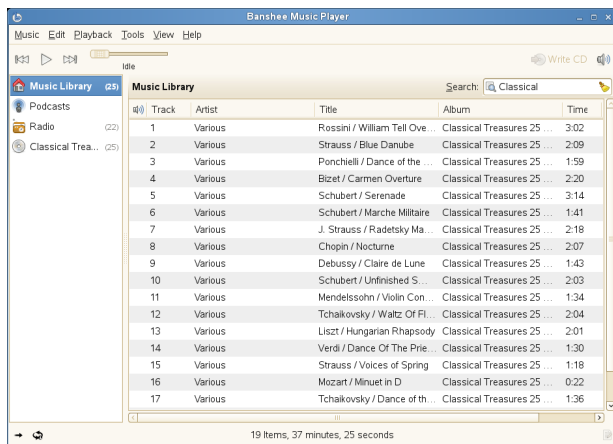
## Managing Your Music Collection

Use Banshee to import CDs, sync your media collection to a digital media player, play music directly from a digital media player, create playlists with songs or videos from your library, create audio and data CDs from subsets of your library, and subscribe to, download, and listen to your favorite podcasts. Banshee also has an Internet Radio plug-in that allows you to listen to audio streams.

To open Banshee, click *Computer* → *Banshee Media Player* or press **Alt + F2** and enter `banshee`.

When you start Banshee for the first time, you need to import your media to make them available in the library. To do so, select *Media* → *Import Media* from the menu. Choose an import source and click *Import Media Source*. After successfully importing your media, you can access them from your library.





To play a song or a movie, simply select it in the library and click the play button. You can also use the buttons in the upper left corner to pause a song or play the next or previous song. Use the loudspeaker button on the right to adjust the volume.

Banshee also has an integrated CD player. When you insert a music CD, your CD title appears in the left panel. Select the title and click the *Play* button to play your full CD.

To create audio and MP3 CDs, select the songs you want, then click the *Edit* → *Write CD* from the menu.

## Logging Out

When you are finished using the computer, you can log out and leave the system running, or restart or shut down the computer.

### Logging Out or Switching Users

Click *Computer* → *Logout*, then select one of the following options:

#### Log out

Logs you out of the current session and returns you to the login screen.

#### Switch User

Suspends your session, allowing another user to log in and use the computer.

### Restarting or Shutting Down the Computer

Click *Computer* → *Shutdown*, then select one of the following options:

#### Shutdown

Logs you out of the current session, then turns off the computer.

#### Restart

Logs you out of the current session, then restarts the computer.

#### Suspend

Puts your computer in a temporary state that conserves power. The state of your session is preserved, however,

including all applications you have running and all documents you have open.

#### Hibernate

Suspends your session, using no power until the computer is restarted. The state of your session is preserved, however, including all applications you have running and all documents you have open.

## For More Information

This guide gave you a short introduction to the GNOME desktop and some key applications running on it. To discover more, refer to *GNOME User Guide* (↑*GNOME User Guide*) and the other manuals available for SUSE Linux Enterprise Desktop at <http://www.novell.com/documentation/sled11/>.

To learn more about GNOME and GNOME applications, refer to <http://www.gnome.org/>.

## Legal Notice

All content is copyright © 2006–2010 Novell, Inc. All rights reserved.

This manual is protected under Novell intellectual property rights. By reproducing, duplicating or distributing this manual you explicitly agree to conform to the terms and conditions of this license agreement.

This manual may be freely reproduced, duplicated and distributed either as such or as part of a bundled package in electronic and/or printed format, provided however that the following conditions are fulfilled:

That this copyright notice and the names of authors and contributors appear clearly and distinctively on all reproduced, duplicated and distributed copies. That this manual, specifically for the printed format, is reproduced and/or distributed for noncommercial use only. The express authorization of Novell, Inc must be obtained prior to any other use of any manual or part thereof.

For Novell trademarks, see the Novell Trademark and Service Mark list <http://www.novell.com/company/legal/trademarks/tmlist.html>. Linux\* is a registered trademark of Linus Torvalds. All other third party trademarks are the property of their respective owners. A trademark symbol (®, ™ etc.) denotes a Novell trademark; an asterisk (\*) denotes a third party trademark.

All information found in this book has been compiled with utmost attention to detail. However, this does not guarantee complete accuracy. Neither Novell, Inc., SUSE LINUX Products GmbH, the authors, nor the translators shall be held liable for possible errors or the consequences thereof.



Novell®

