

The SkakNew fonts

© Copyright 2004, Ulrich Dirr. All rights reserved.

This document describes the **SkakNew** fonts. They're a set of PostScript™ Type-1 fonts converted by **mfttrace/autotrace** from METAFONT sources based on the **Skak** fonts by Torben Hoffmann and Dirk Bächle which themselves are based on **chess** by Piet Tutelaers.

But this was only the first step. A lot of work went into cleaning the outlines (reducing nodes, adding missing extremes, correcting wrong outline direction, etc.pp.). The next step included better glyph metrics both horizontally & vertically, better sidebearings and consistent axis height (adapted to the values of **Computer Modern**) ...

All files may be distributed and/or modified under the conditions of the LaTeX Project Public License, either version 1.2 of this license or (at your option) any later version. The latest version of this license is in

<http://www.latex-project.org/lppl.txt>

and version 1.2 or later is part of all distributions of LaTeX version 1999/12/01 or later.

Further technical information in german on

<http://www.art-satz.de/portfolio/schriften.html>.

Package contents

README.1st

SkakNew-Diagram.afm	SkakNew-Diagram.pfb
SkakNew-DiagramT.afm	SkakNew-DiagramT.pfb
SkakNew-Figurine.afm	SkakNew-Figurine.pfb
SkakNew-FigurineBold.afm	SkakNew-FigurineBold.pfb

SkakNew-Diagram.inf	SkakNew-Diagram.pfm
SkakNew-DiagramT.inf	SkakNew-DiagramT.pfm
SkakNew-Figurine.inf	SkakNew-Figurine.pfm
SkakNew-FigurineBold.inf	SkakNew-FigurineBold.pfm

SkakNew-Diagram.tfm	SkakNew.map
SkakNew-DiagramT.tfm	SkakNew.pdf
SkakNew-Figurine.tfm	SkakNew.tex
SkakNew-FigurineBold.tfm	uskak.fd

Installation directories for tetex/fpTeX

/texmf/fonts/type1 for the *.pfb
/texmf/fonts/tfm for the *.tfm
/texmf/dvips/config for map file
fd file where LaTeX can find it

To use the diagram font with the `skak` package you have to redefine

```
\def\setup@showboard#1{\font\Skak=SkakNew-Diagram at#1pt%
[...]}
```

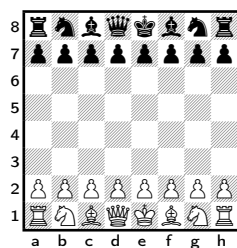
For diagrams in very small sizes there's a supplemental font `SkakNew-DiagramT` with fewer & thicker diagonal strokes.

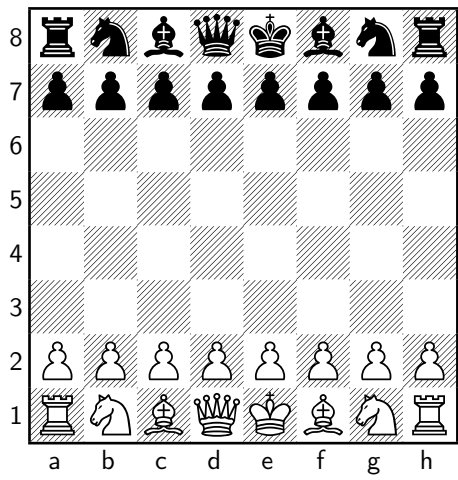
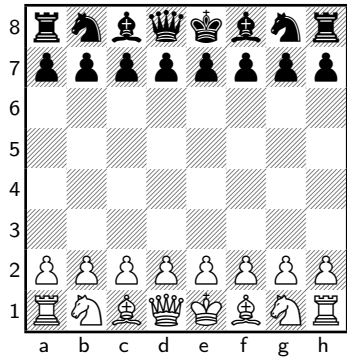
SkakNew-Diagram	SkakNew-Figurine (regular & bold)
0	+ + M « d ∅ r ♂
A ♔ a ♙	- - N ♘ e ± s ■
B ♚ b ♜	A → O » f ± t ∅
J ♗ j ♛	B ♙ P g ± u ∞
K ♔ k ♚	C ↑ Q ♖ h +- v ⊥
L ♙ l ♜	D ⊙ R ♗ i +- x ×
M ♚ m ♙	E △ S > j = y ○
N ♘ n ♗	F □ T ⊕ k ∞
O ♙ o ♜	G ↗ U ○ l —
P ♔ p ♚	H ⇔ V ⇄ m #
Q ♗ q ♛	I ⊕ X × n ∞
R ♙ r ♜	J × a ⇄ o ■
S ♚ s ♙	K ♙ b ∩ p ∅
Z ▨	L ⊥ c ± q ∅

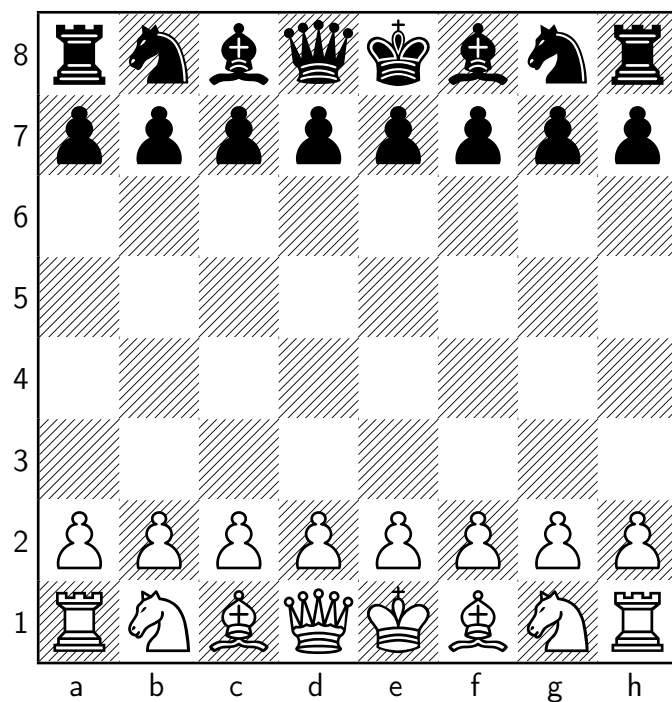
1 e4± e6± 2 d4± d5± 3 ♘c3± ♙b4± 4 e5= c5∞ 5 a3∞ ♙xc3+∅ 6 bxc3∅
 ♘e7→ 7 ♗g4↑ 0-0⇔ 8 ♙d3⊙ f5# 9 exf6△ ♗xf6□ 10 ♙g5∩ ♗f7⇔ 11 ♗h5↗
 g6⊕ 12 ♗d1» ♗a5« 13 ♙d2× ♘bc6⊥ 14 ♘f3⇄ ♗c7■ 15 0-0■ e5∞ 16 ♘g5∅-∅
 ♗f8∅ 17 c4♠ exd4> 18 ♗e1⊕ ♙f5N 19 cxd5RR ♘xd5R 20 ♙c4⊥ ♗ad8⊥ 21 ♗f3||
 ♗d6— 22 ♗b3× b6∅ 23 ♘e4

1 e4± e6± 2 d4± d5± 3 ♘c3± ♙b4± 4 e5= c5∞ 5 a3∞ ♙xc3+∅
 6 bxc3∅ ♘e7→ 7 ♗g4↑ 0-0⇔ 8 ♙d3⊙ f5# 9 exf6△ ♗xf6□ 10 ♙g5∩
 ♗f7⇔ 11 ♗h5↗ g6⊕ 12 ♗d1» ♗a5« 13 ♙d2× ♘bc6⊥ 14 ♘f3⇄ ♗c7■
 15 0-0■ e5∞ 16 ♘g5∅-∅ ♗f8∅ 17 c4♠ exd4> 18 ♗e1⊕ ♙f5N 19 cxd5RR
 ♘xd5R 20 ♙c4⊥ ♗ad8⊥ 21 ♗f3|| ♗d6— 22 ♗b3× b6∅ 23 ♘e4

SkakNew-Diagram







SkakNew-DiagramT

