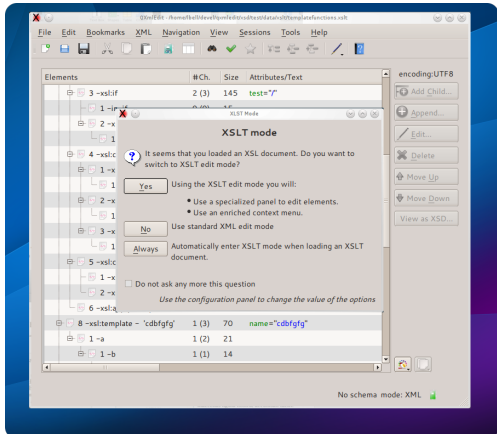




One of the new features of QXmlEdit is the XSLT edit mode. It can be activated when loading an XSLT document, or by an explicit user command and can ease the editing session with a customized display style, specials edit panels and a new context menu.

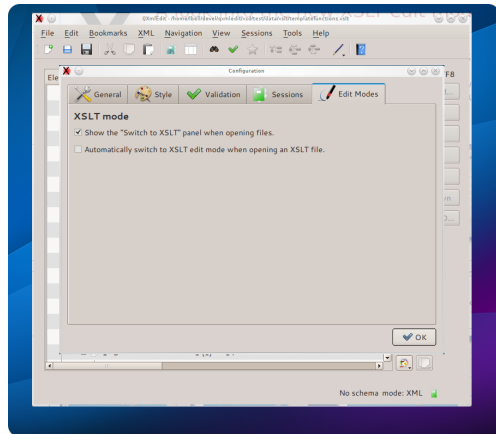
The screenshot shows the XML Editor in Visual Studio Code. The 'XML Edit Mode' context menu is open, displaying various actions for editing XML. The menu items include: 'Add Child Element...', 'Append a Brother Element...', 'Add Comment as a Child...', 'Append Comment as Brother...', 'Add Processing Instruction as Child...', 'Append Processing Instruction as Brother...', 'Transform in Comment', 'Extract Elements from Comment', 'Insert Snippet...', 'XML Schema', 'Properties...', 'Specific Properties... (Ctrl+DblClick)', 'Edit Inner XML Base 64 Code...', 'Edit Inner XML...', 'Edit Inner Base 64 Text...', 'Edit Inner Text as One Line...', 'Transform in Snippet...', 'Move Up', 'Move Down', 'Validate Using Document References', and 'Validate Using New Schema File...'. The 'XML Edit Mode' option is highlighted in the menu. The background shows the XML document structure in the 'Elements' panel and the XML code in the editor.

1- At any moment you can switch to the XSLT edit mode selecting the menu "XML" -> "XSLT Edit Mode"



When loading a file with ".xsl" extension or containing a reference to XSLT namespace.

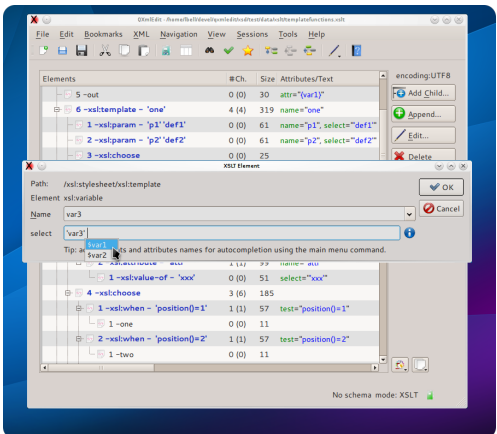
- 1- To activate the XSLT mode simply answer "Yes" or use the return key.
- 2- To have the mode always activated without answering the panel any more, select "Auto".



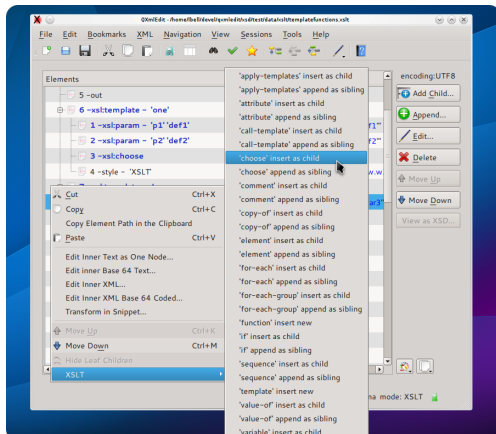
- 1- From the Edit menu choose "Configure", then "Edit modes".
- 2- Set if the xslt edit mode should automatically engage.
- 3- You can hide the panel if you do not care to enter this mode.

[illegible]

A specific display style will be applied only to XSLT elements. The intermixed non XSLT elements will not be touched, to reveal the XSL structure at a glance.

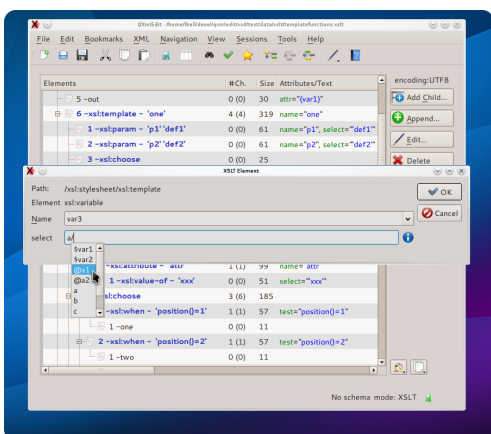


- 1 - Double click an XSL element in the editor.
- 2- A special panel will open.
- 3- When you edit the "select" attribute, the autocompletion function will list the relevant variables.
- 4 - When invoking templates or parameters, you will see their names in the combo.
- 5- To return to the usual property panel use CTRL-double

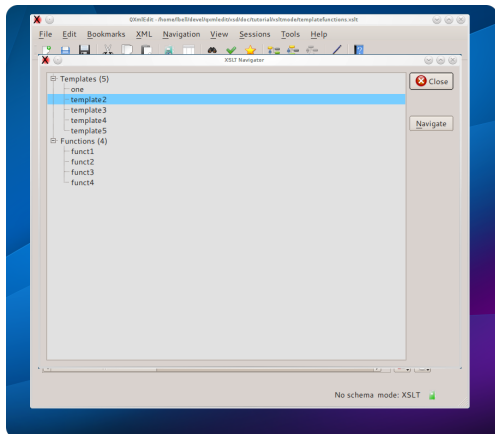


A new context menu appears on the editor elements. The menu propose to you the most used XSL elements giving you the choice to append them to the current element as sibling, or to insert them as a child.

The proposed elements are sync with the context, that is in a "call-template", the only "with-parameter" element is proposed as a child.



When XSLT mode is acting, you can scan the target XML file to extract names to be used with the autocompletion feature of the edit panel. Use the menu "XML" -> "Target XML"



Using the menu "Navigation" -> "Show XSL Navigator" you can access a panel listing all the templates and functions existing in the file. A double click will lead you to the template or function definition in the editor.