

openSUSE

11.1

www.novell.com

December 01, 2008

KDE User Guide



KDE User Guide

Copyright © 2006-2008 Novell, Inc.

Permission is granted to copy, distribute and/or modify this document under the terms of the GNU Free Documentation License, Version 1.2 or any later version published by the Free Software Foundation; with the Invariant Section being this copyright notice and license. A copy of the license is included in the section entitled “GNU Free Documentation License”.

SUSE®, openSUSE®, the openSUSE® logo, Novell®, the Novell® logo, the N® logo, are registered trademarks of Novell, Inc. in the United States and other countries. Linux* is a registered trademark of Linus Torvalds. All other third party trademarks are the property of their respective owners. A trademark symbol (® , TM, etc.) denotes a Novell trademark; an asterisk (*) denotes a third-party trademark.

All information found in this book has been compiled with utmost attention to detail. However, this does not guarantee complete accuracy. Neither Novell, Inc., SUSE LINUX Products GmbH, the authors, nor the translators shall be held liable for possible errors or the consequences thereof.

Contents

About This Guide	vii
Part I Introduction to the KDE Desktop	1
1 Getting Started with the KDE Desktop	3
1.1 Logging In	3
1.2 Exploring the Desktop Components	5
1.3 Leaving Your System	11
1.4 Switching Desktops	13
2 Working with Your Desktop	15
2.1 Starting Programs	15
2.2 Using Dolphin File Manager	19
2.3 Moving Text between Applications	24
2.4 Finding Data on your Computer or in the File System	25
2.5 Accessing Removable Media and External Devices	27
2.6 Using Virtual Desktops	28
2.7 Managing Internet Connections	30
2.8 Exploring the Internet	30
2.9 E-Mail and Scheduling	31
2.10 Instant Messaging	31
2.11 Managing Passwords	32
2.12 Opening or Creating Documents with OpenOffice.org	32
2.13 Viewing PDF Files and Other Documents	33
2.14 Taking Screen Shots	33
2.15 Displaying, Decompressing, and Creating Archives	34
2.16 Creating CDs or DVDs	36
2.17 Viewing and Managing Digital Images	36

2.18	Managing Your Music Collection	36
2.19	For More Information	37
3	Customizing Your Settings	39
3.1	The Personal Settings	39
3.2	Configuring Desktop Objects	42
3.3	Configuring the Main Menu	47
3.4	Configuring the Panel	50
3.5	Configuring KDE Behavior	53
3.6	Configuring System and Security Aspects	59
Part II	Managing Files and Resources	65
4	Accessing Network Resources	67
4.1	General Notes on File Sharing and Network Browsing	68
4.2	Accessing Network Shares	69
4.3	Sharing Folders in Mixed Environments	70
4.4	Managing Windows Files	73
4.5	Configuring and Accessing a Windows Network Printer	76
4.6	Configuring Shortcuts to Network Folders	78
4.7	Configuring and Using a Small Web Server	80
5	Searching with Kerry	85
5.1	Searching Using Kerry	85
5.2	Configuring Kerry	87
6	Managing Print Jobs	89
6.1	Starting Print Jobs in KDE	89
6.2	Monitoring Print Jobs in KDE	91
7	Managing Passwords with KWallet Manager	93
7.1	Starting KWallet	93
7.2	The KWallet Manager	94
7.3	Copying Your Wallet to Another Computer	95
8	Controlling Your Desktop's Power Management with KPowerSave	97
8.1	Tracking the Current State	97
8.2	Suspending Your Computer	98

8.3	Saving Power by Using Schemes	98
8.4	Configuring Notifications	99
8.5	Configuring KPowerSave	101

A Moving from Windows to Linux 103

A.1	Starting Applications from the Main Menu	104
A.2	Managing Files	105
A.3	Using the Command Line	105
A.4	Customizing Your Desktop	106
A.5	Switching between Applications	107
A.6	Accessing Network Resources	108

B GNU Licenses 109

B.1	GNU General Public License	109
B.2	GNU Free Documentation License	112

About This Guide

This manual introduces the KDE 4 desktop of openSUSE® and a variety of applications shipping with it. It guides you through using these applications and helps you perform key tasks. It is intended mainly for end users who want to make efficient use of KDE in everyday life.

Many chapters in this manual contain links to additional documentation resources. This includes additional documentation that is available on the system as well as documentation available on the Internet.

For an overview of the documentation available for your product and the latest documentation updates, refer to <http://www.novell.com/documentation/opensuse111> or to the following section.

1 Available Documentation

We provide HTML and PDF versions of our books in different languages. The following manuals for users and administrators are available on this product:

Start-Up (↑Start-Up)

Guides you through the installation and basic configuration of your system. For newcomers, the manual also introduces basic Linux concepts such as the file system, the user concept and access permissions and gives an overview of the features openSUSE offers to support mobile computing. Provides help and advice in troubleshooting.

KDE User Guide (page 1)

Introduces the KDE desktop of openSUSE. It guides you through using and configuring the desktop and helps you perform key tasks. It is intended mainly for users who want to make efficient use of KDE as their default desktop.

GNOME User Guide (↑GNOME User Guide)

Introduces the GNOME desktop of openSUSE. It guides you through using and configuring the desktop and helps you perform key tasks. It is intended mainly for end users who want to make efficient use of GNOME desktop as their default desktop.

Application Guide (↑Application Guide)

Learn how to use and configure key desktop applications on openSUSE. This guide introduces browsers and e-mail clients as well as office applications and collaboration tools. It also covers graphics and multimedia applications.

Reference (↑Reference)

Gives you a general understanding of openSUSE and covers advanced system administration tasks. It is intended mainly for system administrators and home users with basic system administration knowledge. It provides detailed information about advanced deployment scenarios, administration of your system, the interaction of key system components and the set-up of various network and file services openSUSE offers.

Novell AppArmor Administration Guide (↑Novell AppArmor Administration Guide)

Contains in-depth information about the use of Novell AppArmor in your environment. AppArmor is a security application that lets you specify per program which files the program may read, write, and execute.

Lessons For Lizards

A community book project for the openSUSE distribution. A snapshot of the manual written by the open source community is released on an equal footing with the Novell/SUSE manuals. The lessons are written in a cook book style and cover more specific or exotic topics than the traditional manuals. For more information, see http://developer.novell.com/wiki/index.php/Lessons_for_Lizards.

In addition to the comprehensive manuals, several quick start guides are available:

KDE Quick Start (↑)

Gives a short introduction to the KDE desktop and some key applications running on it.

GNOME Quick Start (↑)

Gives a short introduction to the GNOME desktop and some key applications running on it.

Novell AppArmor Quick Start

Helps you understand the main concepts behind Novell® AppArmor.

Find HTML versions of most openSUSE manuals in your installed system under `/usr/share/doc/manual` or in the help centers of your desktop. Find the latest documen-

tation updates at <http://www.novell.com/documentation> where you can download PDF or HTML versions of the manuals for your product.

For information where to find the books on your installation media, refer to the Release Notes of this product. The Release Notes are available from your installed system under `/usr/share/doc/release-notes/` or in the help centers of your KDE or GNOME desktop.

2 Feedback

Several feedback channels are available:

- To report bugs for a product component or to submit enhancements requests, please use <https://bugzilla.novell.com/>. If you are new to Bugzilla, you might find the *Submitting Bug Reports* article—available under http://en.opensuse.org/Submitting_Bug_Reports helpful. Frequently asked questions on reporting bugs are available under http://en.opensuse.org/Bug_Reporting_FAQ.
- We want to hear your comments and suggestions about this manual and the other documentation included with this product. Please use the User Comments feature at the bottom of each page of the online documentation and enter your comments there.

3 Documentation Conventions

The following typographical conventions are used in this manual:

- `/etc/passwd`: filenames and directory names
- *placeholder*: replace *placeholder* with the actual value
- `PATH`: the environment variable `PATH`
- `ls, --help`: commands, options, and parameters
- `user`: users or groups

- Alt, Alt + F1: a key to press or a key combination; keys are shown in uppercase as on a keyboard
- *File*, *File > Save As*: menu items, buttons
- *Dancing Penguins* (Chapter *Penguins*, ↑Another Manual): This is a reference to a chapter in another manual.

4 About the Making of This Manual

This book is written in Novdoc, a subset of DocBook (see <http://www.docbook.org>). The XML source files were validated by `xmllint`, processed by `xsltproc`, and converted into XSL-FO using a customized version of Norman Walsh's stylesheets. The final PDF is formatted through XEP from RenderX.

5 Source Code

The source code of openSUSE is publicly available. To download the source code, proceed as outlined under http://www.novell.com/products/suselinux/source_code.html. If requested we send you the source code on a DVD. We need to charge a \$15 or €15 fee for creation, handling and postage. To request a DVD of the source code, send an e-mail to sourcedvd@suse.de [<mailto:sourcedvd@suse.de>] or mail the request to:

SUSE Linux Products GmbH Product Management openSUSE Maxfeldstr. 5 D-90409
Nürnberg Germany

6 Acknowledgments

With a lot of voluntary commitment, the developers of Linux cooperate on a global scale to promote the development of Linux. We thank them for their efforts—this distribution would not exist without them. Furthermore, we thank Frank Zappa and Pawar. Special thanks, of course, goes to Linus Torvalds.

Have a lot of fun!

Your SUSE Team

Part I. Introduction to the KDE Desktop

Getting Started with the KDE Desktop

This chapter assists you in becoming familiar with the KDE desktop of your open-SUSE®. If you have not yet installed your system, refer to Chapter 1, *Installation with YaST* (↑Start-Up).

KDE stands for *K Desktop Environment* and is an easy-to-use graphical user interface graphical user interface that communicates with the underlying Linux system to access and manage files, folders, and programs. It has many applications designed to help you in your daily work. KDE also offers many choices to modify your desktop according to your needs and wishes. Read more about configuring your desktop in [Chapter 3, Customizing Your Settings](#) (page 39).

The following description is based on the default configuration of the KDE 4 desktop shipped with your product. If you or your system administrator has modified the defaults, some aspects may be different, such as appearance or keyboard shortcuts.

1.1 Logging In

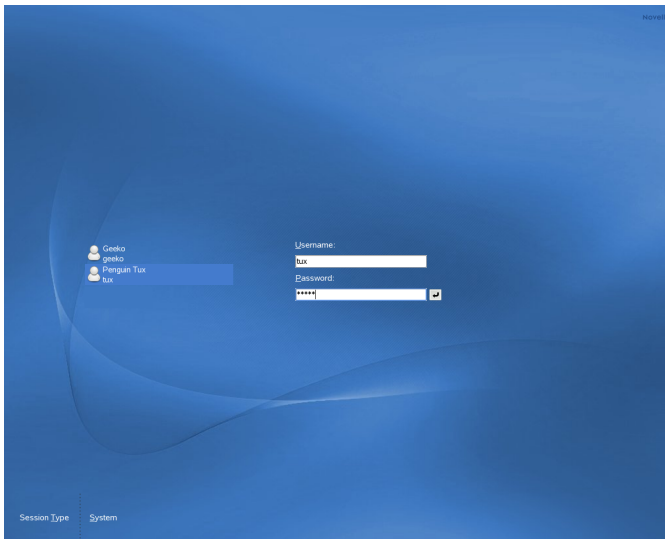
If more than one user account is configured on your computer, usually all users must authenticate—unless *Auto Login* is configured for a certain user. Auto login logs the user in to the desktop environment automatically on boot. This feature can be enabled or disabled during installation or at any time using the YaST user management module. For more information, see Chapter 5, *Managing Users with YaST* (↑Start-Up). If your computer is run in a network environment and you are not the only person using the machine, you are usually prompted to enter your username and password when you

start your system. If you did not set up your system and your user account yourself, check with your system administrator for your username and password.

The appearance of the login screen depends on the product you use and on the desktop environment installed on your system. The login process is managed by an application. For KDE, it is KDM. If the GNOME desktop is additionally installed on your system, it may be GDM.

To start a normal login, enter your username and password. If desktops other than KDE are installed, you can select which desktop environment to start by clicking the *Session Typing* menu item at the bottom of the login screen. Press Enter to proceed. For information on how to log out or switch to another desktop, see [Section 1.3, “Leaving Your System”](#) (page 11) and [Section 1.4, “Switching Desktops”](#) (page 13).

Figure 1.1 A KDM Login Screen



If your system administrator has created an encrypted home directory for you (which is useful as a protection against theft or unauthorized removal of the hard disk), your home directory is mounted on login. After login, you can directly access the data as usual—without entering another password.

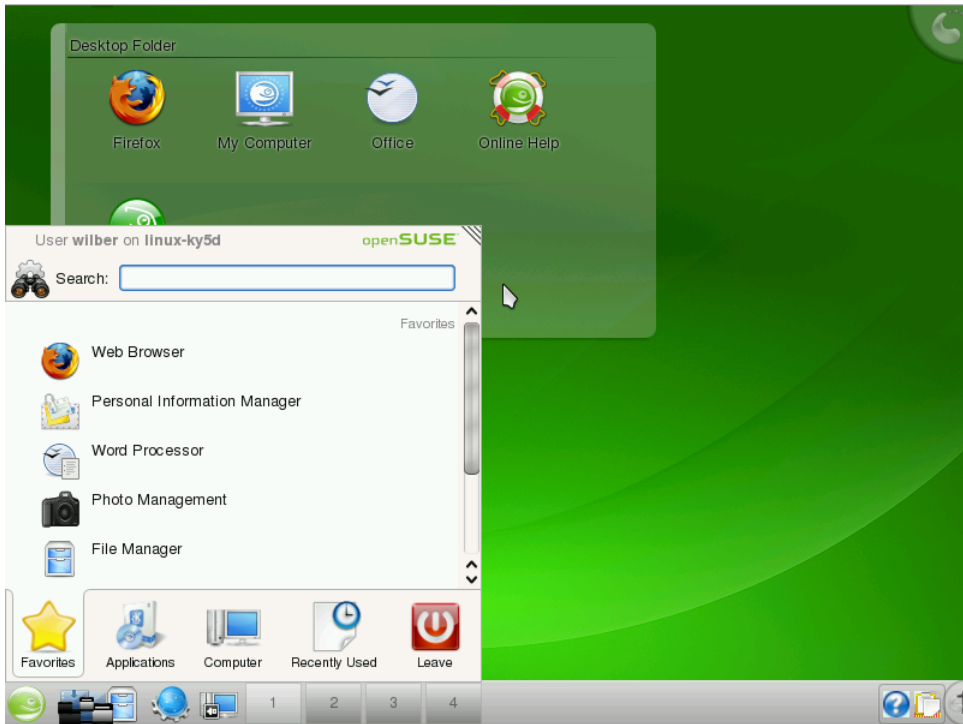
NOTE: Connecting to an Active Directory Server

To access shared network resources, you can also authenticate a KDE client machine against an Active Directory server. For further details, refer to [Chapter 4, Accessing Network Resources](#) (page 67). If your machine is configured for this kind of authentication, the login screen also provides an additional field. In this case, proceed as follows during login:

1. Select the domain from the list.
 2. Enter your Windows* username.
 3. Enter your Windows password and press Enter.
-

1.2 Exploring the Desktop Components

After logging in to KDE for the first time, you see the KDE desktop. It consists of the following basic elements:



Desktop Icons and Desktop Folder Desktop icons represent files, directories, applications, functions, and removable media, like CDs or DVDs. Click an icon on the desktop to access its associated program or application. By default, your desktop icons are shown in a *Desktop Folder*, a transparent region of the screen showing the contents of the Desktop folder in your home directory. If you drag an icon from the *Desktop Folder* and drop it on another part of the desktop, it appears as a widget that you can tilt, enlarge or minimize. Widgets are small applications that can be integrated into your desktop. Right-click to open a context menu to access the icon properties, or to remove the icon. .

Desktop Context Menu: Right-click an empty area on the desktop to access the context menu for configuring the appearance of the desktop, adding panels or widgets to the desktop, locking the widgets in their current position, or for leaving the current session or locking the screen.

KDE Panel: The panel (in KDE also called “Kicker”) is a bar, typically located at the top or the bottom of the screen. By default, the panel of your KDE desktop consists

of the following areas (from left to right): quick launcher with the main menu icon on the left and further program icons, pager (desktop previewer), taskbar, and system tray. You can add or remove icons in the panel and customize the appearance of the panel as well as its location on the desktop. If you hold your mouse pointer over an icon in the panel, a short description is displayed.

Quick Launcher: The quick launcher contains the main menu button and some larger icons that are shortcuts to frequently used programs, folders, and functions.

Main Menu Button: Use the icon at the far left of the panel to open a menu holding a search function at the top and several tabs at the bottom. The *Applications* tab shows all installed programs in a function-oriented menu structure which makes it easy to find the right application for your purpose even if you do not know the application names yet. For more information, refer to [Section 2.1.1, “Using the Main Menu”](#) (page 15) .

Pager (Desktop Previewer): Between the quick launcher and the taskbar, find a miniature preview that shows your virtual desktops (if not configured otherwise, they are numbered). openSUSE allows you to organize your programs and tasks on several desktops, which minimizes the number of windows to arrange on the screen. To switch between the virtual desktops, click one of the symbols in the pager. For more information, refer to [Section 2.6, “Using Virtual Desktops”](#) (page 28).

Taskbar: By default, all started applications and open windows are displayed in the taskbar, which allows you to access any application regardless of the currently active desktop. Click to open the application. Right-click to see options for moving, restoring, or minimizing the window.

System Tray: This rightmost part of the panel usually holds some smaller icons, including the system clock displaying time and date, the volume control, and several other helper applications such as the device notifier, informing you about recently plugged or inserted devices such as USB sticks, external hard disks, cameras, CDs, or DVDs. For more information, refer to [Section 2.5, “Accessing Removable Media and External Devices”](#) (page 27).

The integration and handling of desktop objects has changed from KDE 3.x to KDE 4, which now uses a new desktop and panel interface tool called Plasma. Plasma supports desktop widgets (also called “plasmoids”), similar to Apple’s dashboard widgets. Learn more about the most key desktop objects in the following sections.

1.2.1 Locking and Unlocking Desktop Objects

With KDE 4, desktop elements can be locked in their current position to prevent them from being moved around on the desktop. As long as the desktop elements are locked, you cannot add, move, or remove any objects to and from your desktop.

To lock or unlock the desktop elements, right-click an empty space on the desktop and select *Lock Widgets* or *Unlock Widgets*. Find how to add, remove and configure widgets and change numerous desktop elements in [Chapter 3, Customizing Your Settings](#) (page 39).

1.2.2 Desktop Icons

By default, the *Desktop Folder* showing the contents of the `~/Desktop` folder, displays the following icons by default:

My Computer

The *My Computer* icon is very useful for viewing the most important information about your hardware, network status, disks (hard disks, removable media, and external devices), operating system, and some common folders at one glance. For example, find processor type and speed listed there, information about your RAM and the current swap status, or your graphics card. *OS Information* lists the most important information about your operating system such as the Kernel version included, the current user, version number and type of the operating system, and the KDE version number. openSUSE ships with a number of further tools (either graphical or command line tools) that you can use to get more detailed information about your system. If you need detailed hardware information about your system, use the YaST hardware probing, described in Section “Probing Your Hardware” (Chapter 2, *Setting Up Hardware Components with YaST*, ↑Start-Up).

Firefox

Opens the Firefox Web browser. For more information, refer to Chapter 20, *Browsing with Firefox* (↑Application Guide).

Office

Opens a new OpenOffice.org document. For an introduction to the office suite, refer to Chapter 1, *The OpenOffice.org Office Suite* (↑Application Guide).

openSUSE

Opens the SUSEgreeter which holds introductory information and links to various information sources about openSUSE.

Help

Starts Konqueror Web browser and takes you to the help page of the openSUSE community [<http://help.opensuse.org>] from where you can access various documentation resources, mailing lists, Web forums or chats with members of the openSUSE community. Find more information about accessing and using help resources (integrated with your system or on the Web) in Chapter 12, *Help and Documentation* (↑Start-Up).

1.2.3 Panel Icons

The quick launch area of your panel as shipped with openSUSE includes the following icons by default:

Main Menu Icon

Opens the main menu, similar to the Microsoft* Windows start menu.

Dolphin Icon

Opens Dolphin, the default file manager.

Device Notifier

Informs you about recently plugged or inserted devices such as USB sticks, external hard disks, cameras, CDs, or DVDs. For more information, refer to [Section 2.5, “Accessing Removable Media and External Devices”](#) (page 27).

Apart from the larger icons in the quick launcher, the panel also holds a number of smaller icons in the system tray area on the right:

Klipper

KDE's clipboard tool that “remembers” the last entries you have moved to the clipboard. To view the clipboard contents, click the Klipper icon or press Ctrl + Alt + V. The most recent entry is listed on top and is marked as active with a black check mark. To insert the active clipboard entry again, move the mouse pointer to the target application, then middle-click. For more information, see [Section 2.3, “Moving Text between Applications”](#) (page 24).

KMix

Your desktop's default mixer, KMix helps you to control sound on your desktop after your sound card has been detected and configured with YaST, the central tool for installation and configuration of your system. By default, clicking the KMix icon in the system tray shows the master controller with which to increase or decrease the overall volume. For more information, refer to Chapter 25, *Playing Music and Movies* (↑Application Guide).

openSUSE Updater

Helps you keeping your system up to date. When you connect to the Internet, the openSUSE Updater automatically checks whether software updates for your system are available. The applet icon changes color and appearance depending on the availability of updates for your system. For detailed information about how to install software updates with openSUSE Updater and how to configure openSUSE Updater, refer to Chapter 5, *YaST Online Update* (↑Reference).

KNetworkManager

If you manage your network connection with NetworkManager and have enabled the use of NetworkManager in YaST, the KNetworkManager icon also appears in your system tray by default. Use it to change and configure network connections. For detailed information, refer to Chapter 10, *Using NetworkManager* (↑Start-Up).

Kerry

Kerry is a KDE front-end for the Beagle search tool, which indexes your personal information space to help you find whatever you need. You can use Kerry to find documents, e-mails, Web history, IM/ITC conversations, source code, images, music files, applications, and much more. For more information, refer to [Chapter 5, *Searching with Kerry*](#) (page 85).

Clock

For information about the current date and time, click the clock in the system tray or hover your mouse pointer over the clock. You can change the clock settings (such as appearance or additional data to be displayed) from the context menu available upon right-click. If you need to update the system time, start YaST and select *System > Date and Time*. Refer to Section “Clock and Time Zone” (Chapter 1, *Installation with YaST*, ↑Start-Up) for more information.

Lock Screen

Locks your screen and starts the screen saver. Access to the session can only be regained with a password.

Log Out

Logs you out and ends your current KDE session. If not configured otherwise in the KDE 4 Personal Settings, (see [Adjusting the Session Handling](#) (page 62)), the session manager will restore the currently open windows by default next time you log in to KDE.

Of course, you can also change the way your KDE desktop looks and behaves to suit your own personal tastes and needs. To learn how to configure individual desktop elements or how change the overall appearance and behavior of your desktop, refer to [Section 3.1, “The Personal Settings”](#) (page 39).

If you would like to start working with your desktop now, continue reading at [Chapter 2, Working with Your Desktop](#) (page 15). Otherwise you can leave your system with one of the possibilities described below.

1.3 Leaving Your System

When you have finished using the computer, there are several options how to leave your system: some of them will leave the system running, others will shutdown the computer. If your system provides power management, you can also choose to *suspend* your computer—in this state, it will consume considerably less power than usual but it will start much faster than after a complete shutdown and boot process.

You can access all the options to leave your session or your system from the main menu. Click the main menu icon on the left and switch to the *Leave* tab. Select one of the following options:

Logout

Ends your current session and leaves your system running. If not configured otherwise in the KDE 4 Personal Settings (see [Adjusting the Session Handling](#) (page 62)), the session manager will restore the currently open windows by default next time you log in to KDE. Find more information about the session manager and configuration options at [Adjusting the Session Handling](#) (page 62).

Lock

Prevents unauthorized access by others by locking your screen and starting a screen saver. Access to the session can only be regained with a password. To unlock, enter your normal login password. For information about configuring your screen saver, see [Configuring the Screen Saver](#) (page 46).

Switch User

Starts a second session with a graphical user interface on your machine. Your current session remains active while you are taken to the login screen where you can log in as a different user. You can access the first session again by pressing Ctrl + Alt + F7. To access a new session, press F8 instead of F7. Additional sessions can be accessed by pressing Ctrl + Alt + F9 to F12.

If more than one desktop environment is installed on your system, you can also choose to switch to another desktop for the new session as described in [Section 1.4, “Switching Desktops”](#) (page 13).

Suspend to RAM

This menu item is only available if your computer provides power management functionality. Pauses your computer without logging you out. All your data and the session data is saved to disk before the system is laid to rest. It is thus protected against data loss should you lose power in the meantime. Waking the system up again is much faster than booting it from scratch.

Suspend to Disk

This menu item is only available if your computer provides power management functionality. Pauses your computer without logging you out. All your data and the session data is saved to RAM. Bringing the system up again is faster than restoring a session from disk.

Shutdown Computer

Logs you out and turns your computer off.

Restart Computer

Initiates the shutdown process and reboots your computer. Instead of selecting the desired boot option in the boot manager, you can also select the desired option directly—just click one of the options below *Restart Computer*.

To access most of the options for leaving, you can also use the keyboard shortcut defined in the Personal Settings. Usually, this is Ctrl + Alt + L.

TIP: Looking Up KDE Keyboard Shortcuts

If you are interested in other KDE keyboard shortcuts, look them up in the KDE 4 Personal Settings, described in [Chapter 3, Customizing Your Settings](#) (page 39).

For a description of how to change KDE keyboard shortcuts, refer to [Modifying KDE Keyboard Shortcuts](#) (page 55).

If you have already logged out, you can still access shutdown and restart option from the login screen by clicking *System* and selecting the respective menu items.

1.4 Switching Desktops

If more than one desktop environment is installed on your system (for example, KDE and GNOME, or KDE 3.5.x and KDE 4), you can choose to switch to another desktop when logging in again (or when logging in as a different user). To do so, proceed as follows:

- 1 On the login screen, click *Session Type* and select the desktop environment to start.
- 2 Enter a valid username and password. A new session on the selected desktop environment starts.
- 3 To switch back again, log out from the current desktop and select a different *Session Type* on the login screen. If you do not select a new session type, your next session will be of the same type as the session before.

Working with Your Desktop

After having being introduced to the desktop, you can now start to work with your desktop.

2.1 Starting Programs

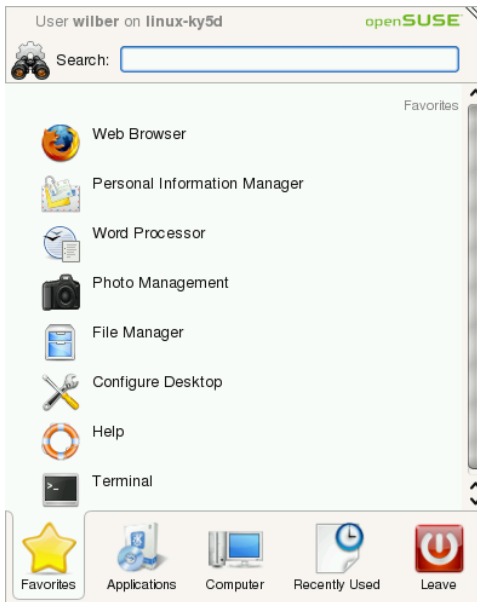
You can start programs either from the main menu or from the command line, using the *Run Command* dialog or a shell. Additionally, you can start programs from the desktop or the panel by left-clicking the respective program icon once.

TIP: Selecting and Starting Objects

Clicking an object once in openSUSE usually starts an action directly: a program starts, a preview of the file is displayed, or the folder is opened. To former users of Windows, this behavior may be rather unusual. If you just want to select one or several objects without any other action, press Ctrl then click the object. Alternatively, alter your mouse settings in the KDE Personal Settings as described in [Adjusting the Mouse Settings](#) (page 54).

2.1.1 Using the Main Menu

To open the main menu, click the main menu icon in the panel or press Alt + F1. The main menu consists of the following elements: a search function at the top and several tabs at the bottom, providing quick access to the key functions of the menu.



The following tabs are available:

Favorites

Shows a default selection of key programs for quick access. You can modify the selection and add or delete programs from the list as described in [Changing the SUSE Menu Style](#) (page 48).

Applications

Shows all applications installed on your system. The function-oriented menu structure makes it easy to find the right application for your purpose even if you do not know the application names yet. To navigate through the structure, click an entry and use the arrow icons at the right or the left to switch back and forth. To switch back to the top-level hierarchy from anywhere in the structure, just click the tab's name or icon.

Computer

Gives quick access to some places often needed, such as important system folders (home directory, network folders) and media devices. Also allows you to quickly access system information and to change your system configuration with YaST, if necessary.

Recently Used

Lists the most recently opened programs and files. To reopen a program or file, just click the entry. To remove all recently used programs or files from the list, right-click below the respective heading and select *Clear Recently Used Applications* or *Clear Recently Used Documents*.

Leave

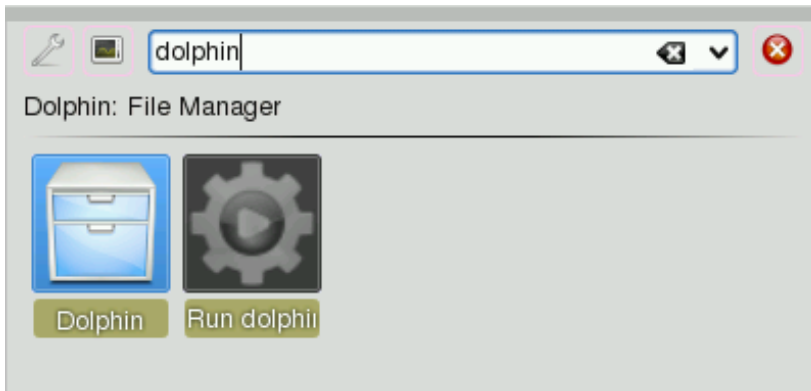
Shows several options for leaving the session such as logging out, locking the screen (access can only be regained with a password), shutting down or restarting the computer. For more information, see [Section 1.3, “Leaving Your System”](#) (page 11).

Additionally the menu displays your login name and the hostname of your computer. This information is useful when you are logged in as a different user or on a remote computer—it always shows you which system you are currently working on.

2.1.2 Using the Run Command Dialog

KRunner is a helper application with lets you quickly start programs. Apart from that, it offers a search function for finding applications or locations. Refer to [Section 2.1.3, “Searching for Programs”](#) (page 18) for more information.

Press **Alt + F2** to open the *Run Command* dialog. Type a command, for example, `dolphin`, and press **Enter** or click *Launch* to start the application. The command to start the application is often (but not always) the application name written in lowercase.



If you want to start an application as a different user (for example, as `root`), click the wrench icon in the *Run Command* dialog. Activate *Run as Different User*, enter the user's password and press Enter.

The *Run Command* dialog also allows you to use the so-called Web shortcuts defined in Konqueror. With these, you can send search requests directly to a search engine like Google*, without opening the browser and visiting the Web sites before. For more information, refer to Section “Using Web Shortcuts” (Chapter 19, *Browsing with Konqueror*, ↑Application Guide).

Click the wrench symbol to explore the full range of KRunner's abilities: For example, if the *Contacts* plug-in is activated, just enter the name of one of your contacts and then press Enter to open KMail and to start typing your mail.



If the respective plug-in is activated, you can also use KRunner as calculator or to convert units.

2.1.3 Searching for Programs

Both the main menu and the *Run Command* dialog offer a search function that lets you quickly start programs even if you do not know the exact application name or command yet. To search for an application, start typing a command or part of the application

name in the main menu *Search* field of the menu or the input field in the *Run Command* dialog. Each character you enter narrows down the search.

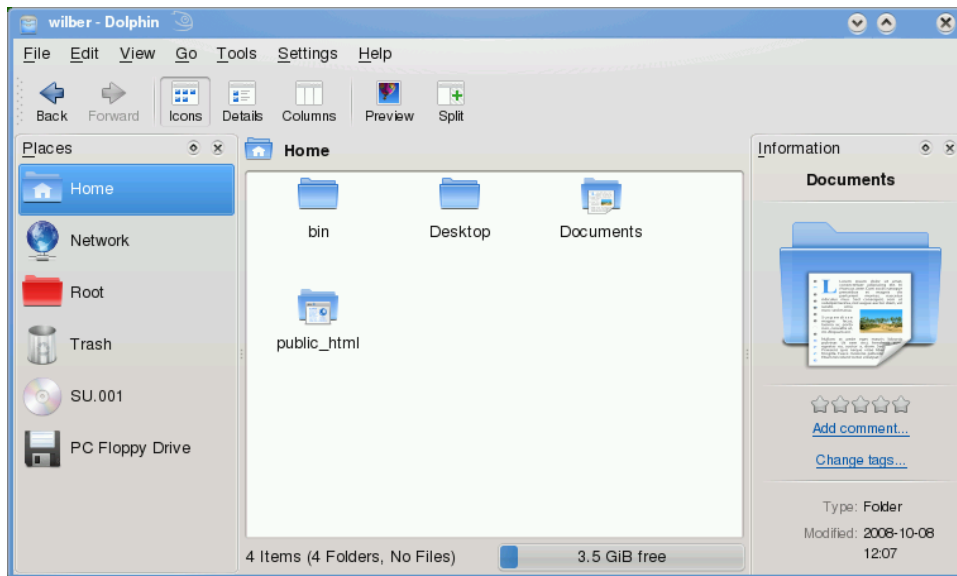
From the list below the input field, choose the application or object matching your query.

2.2 Using Dolphin File Manager

With KDE 4, Dolphin has replaced Konqueror as the default file manager, while Konqueror remains the default Web browser. For more information about Konqueror as Web browser, see Chapter 19, *Browsing with Konqueror* (↑Application Guide). To start Dolphin, click the card box icon in the panel or press **Alt + F2** and enter `dolphin`.

2.2.1 Dolphin Main Window

The Dolphin main window consists of the following elements:



Menu Bar: The menu bar holds menu items for actions like copying, moving, or deleting files, changing views, starting additional tools, defining your settings, and getting help.

Toolbar: The toolbar provides quick access to frequently used functions that can also be accessed via the menu. If you hover the mouse pointer over an icon, a short description is displayed.

Location Bar: The location bar displays the path to the current directory. It is available in two versions: one shows the path to the current directory with icons for every superordinate folder in a “bread crumb” view. Click any icon in the bread crumb view to change to that directory. The second version of the location bar shows the path to the current directory as a string of text you can edit.

Panels: By default, Dolphin shows only the *Places* panel on the left. It allows quick access to some often used places like your home directory, the `/root` directory of the file system, the trash bin, or removable media. There are several other panels you can add to the main window.

Display Field (Working Space): The display field shows the contents of the selected directory or file. By default, Dolphin displays the contents of your home directory on start-up. Clicking a folder or file in Dolphin directly starts an action: Dolphin loads the file into an application for further processing or opens the folder.

Status Bar: Shows the file type and size of the currently selected object and the available disk space .

2.2.2 Managing Files and Folders

To perform actions like copying, moving, creating or deleting files, you need appropriate permissions to the folders and files involved in your action.

Procedure 2.1 *Copying, Moving, or Delete Files or Folders*

- 1 In order to select one or multiple files and folders in Dolphin, move your mouse pointer over the file or folder but do not click. A green cross appears on the upper-left edge. To select the file or folder now, click the green cross icon. Alternatively, press `Ctrl` and click the file or files. To deselect again, click the red minus icon that appears if the object is currently selected.

- 2 Right-click and select *Copy* or *Cut* from the context menu.
- 3 Navigate to the destination folder in which to insert the object.
- 4 To create a new folder at the current location, select *File > Create New > Folder* or press F10. Enter a folder name in the new window and press Enter.
- 5 To insert the object you copied or cut in Step 2 (↑), right-click the destination folder in the main display field and select *Paste*. The object is copied or moved there.
- 6 To delete a file or folder, right-click the object in the main display field and select *Move to Trash* from the context menu. The object is moved to the trash bin. From there, you can restore it if necessary or delete the object irretrievably.

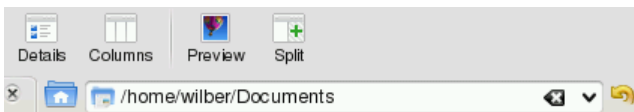
To quickly filter for certain filenames in the current directory, press Ctrl + I or select *Tools > Show Filter Bar* to add the *Filter* input field to the bottom of the Dolphin main window. Type any part of the filename you are searching for to see all files in the current directory containing the search string. For more detailed and advanced searches, press Ctrl + F to use KFind.

2.2.3 Configuring Dolphin

Dolphin offers many options to adjust the view and the overall settings according to your needs and wishes.

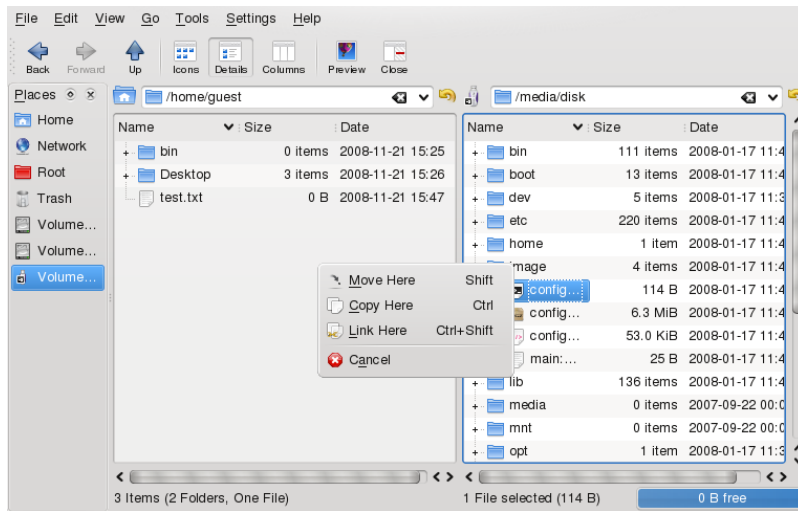
Procedure 2.2 *Changing the View*

- 1 To toggle between the bread crumb view and the editable version of the location bar, press Ctrl + L or click at the far right end of the location bar. Enter a path to a directory by typing it in. After typing an address, press Enter.

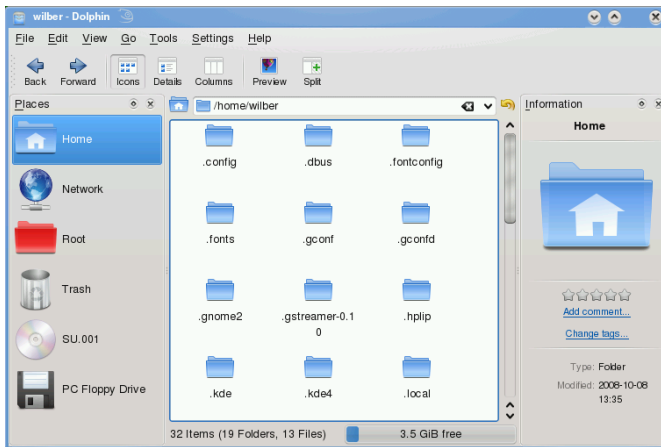


To delete the contents of the location bar click the black X symbol on the left. To switch back to the bread crumb view, press Ctrl + L.

- 2 To change the view of the currently displayed folder, either click *Icons*, *Details*, or *Columns* in the toolbar. Dolphin remembers the selected view for each folder. Alternatively, press Ctrl + 1, Ctrl + 2, or Ctrl + 3 to switch between the view modes. Click *Split* or press F3 to view the contents of the current folder in two separate columns. Now you can navigate to a different directory in each column and easily drag or drop objects or compare the contents of directories.



- 3 To make Dolphin also show hidden files, select *View > Show Hidden Files* or press Alt + +.
- 4 To view more details about the files (like access permissions or ownership), select *View > Additional Information* and enable the respective options.



- 5 To add further directories to the *Places* panel, drag a folder from the working space to the *Places* panel and drop it there. Right-click and use the context menu to hide, edit or remove entries from *Places*.
- 6 If you want to add more panels to the main window, select *View > Panels* and select additional panels such as *Information*, *Folders*, or *Terminal*.
 - The *Information* panel shows the properties and a preview of the currently selected file. It also lets you add comments to the file.
 - The *Folder* panel shows a tree view of the whole file system and lets you navigate through all subdirectories of `/root`.
 - The *Terminal* panel attaches a command line to the bottom of the main Dolphin window. Whenever you click a directory in the display field, the *Terminal* panel also changes to the according directory, so you can easily switch to the command line for certain tasks you prefer to execute in a shell.

You can even detach the panels from the main Dolphin window by clicking the left icon at the top of each panel. Click the panel's title bar and drag it to another place on the desktop. To reintegrate the panel into the Dolphin window again, click the left symbol at the top of the panel again.

Procedure 2.3 *Changing Dolphin's Overall Behavior*

If you want to change Dolphin's overall behavior or view, select *Settings > Configure Dolphin* and explore the options offered in the Dolphin configuration dialog.

- 1** To use the same view mode for all folders, click *View Modes* in the left sidebar. Activate *Use Common View Properties for All Folders* on the *General* tab. Adjust the options for the individual view modes on the other tabs according to your wishes and click *Apply* to save the changes.
- 2** If you want Dolphin to show a different default directory on start-up, or if you want to permanently use the editable location bar instead of the bread crumb view, change the according options on the *General* tab.
- 3** Click *OK* to save the changes and to close the Dolphin configuration dialog.

2.3 Moving Text between Applications

To copy text to the clipboard and insert it again, former MS Windows users automatically try the keyboard shortcut Ctrl + C and Ctrl + V, which often works in Linux as well. Copying and inserting texts is even easier in Linux: to copy a text to the clipboard, just select the text with the mouse then move the mouse cursor to the position to which to insert the text. Click the middle button on the mouse to insert the text (on a two-button mouse, press both mouse buttons simultaneously).

With some applications, if a text is already selected in the application where you want to insert the text, this method does not work because the text in the clipboard is overwritten by the other selected text. For such cases, the KDE application Klipper is very useful. Klipper “remembers” the last entries you have moved to the clipboard. By default, Klipper is started when KDE is loaded and appears as a clipboard icon in the panel. To view the clipboard contents, click the Klipper icon or press Ctrl + Alt + V. The most recent entry is listed on top and is marked as active with a black check mark. If an extensive text was copied to Klipper, only the first line of the text is displayed.

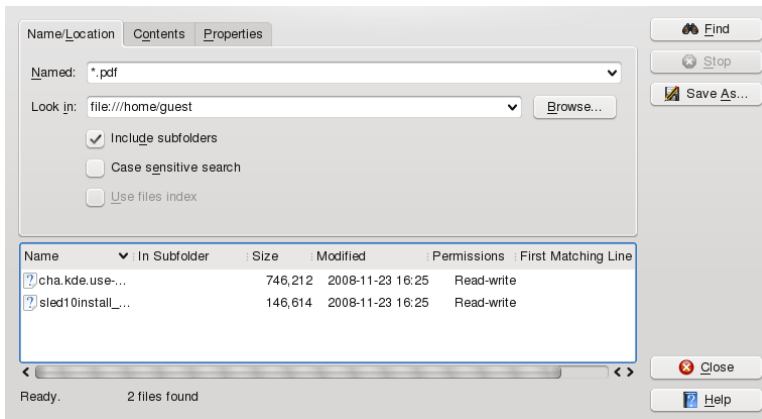
To copy an older text fragment from Klipper to an application, select it by clicking it, move the mouse pointer to the target application, then middle-click. For further information about Klipper, see the Klipper online help.

2.4 Finding Data on your Computer or in the File System

KDE provides more than one application for finding data on your computer or in the file system. With *Kerry*, you can very easily search your personal information space (usually your home folder) to find documents, e-mails, Web history, IM/ITC conversations, source code, images, music files, applications, and much more. For more information, refer to [Chapter 5, *Searching with Kerry*](#) (page 85).

With *KFind*, you can locate files on your computer or in the file system using a variety of search criteria, such as file content, dates, owner, or file size. Start it from the main menu with *Applications > Find Files/Folders*. Alternatively, press `Alt + F2` and enter `kfind`.

Figure 2.1 *Finding Files with KFind*



2.4.1 Finding Files

To perform a search for certain filenames, proceed as follows:

- 1 Start KFind from the main menu or command line.
- 2 Click the *Name/Location* tab to perform a basic search.

- 3 Specify the name of the file to find in *Named*. You can use the following wild cards:

Asterisk

The asterisk (*) stands for any number of missing characters (even zero). For example, searching for `marc*` can find the files *marc*, *marc.png*, and *marc_must_not_read_this.kwd*. Searching for *mar*.kwd* can find *market-place.kwd* and *marc_must_not_read_this.kwd*.

Question Mark

The question mark (?) stands for exactly one character. For example, searching for `mar?` can find *marc*, but `marc?` cannot find anything if your files are named *marc* and *marc.png*. You can put as many question marks in the search term as you want. It finds exactly that number of characters.

You can combine those two wild card symbols in any search term.

- 4 Specify the folder to search in *Look In* or click *Browse* to find the folder you want. Select *Include Subfolders* to also search all subfolders starting from your specified folder.
- 5 Press Enter or click *Find*.

2.4.2 Performing an Advanced File Search

For a more detailed search, you can also specify further options, such as a text the file to find must contain:

- 1 Start KFind from the main menu or the command line.
- 2 Click the *Name/Location* tab.
- 3 Specify the name of the file to find in *Named*.
- 4 Specify the folder in which to search in *Look In* or click *Browse* to find the folder.
- 5 Click the *Contents* tab.

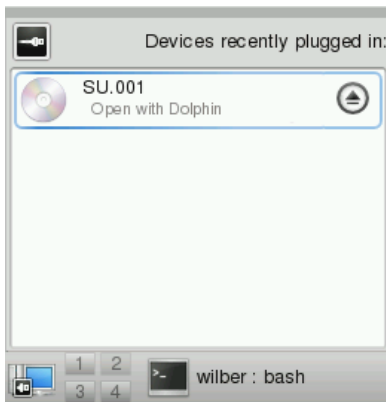
- 6 In *File Type*, specify the type of file to find.
- 7 In *Containing Text*, enter the word or phrase the file you are searching for must contain.
- 8 If you want to specify further options, click the *Properties* tab and choose the options you want.
- 9 Click *Find* to perform the search.

For detailed information about the search options available, refer to the KFind online help.

2.5 Accessing Removable Media and External Devices

If you insert removable media (such as CDs or DVDs) in your computer's drive, or connect external devices such as USB sticks, external hard disks, media players or digital cameras, these are usually automatically detected. In KDE 4, a panel widget informs you about recently plugged or inserted devices.

Figure 2.2 *Device Notifier*



Click on the entry to show the device's contents with Dolphin.

If the device is not automatically displayed in the device notifier, try to access it manually with Dolphin.

Start Dolphin file manager and switch to the editable version of the location bar as described in [Changing the View](#) (page 21). Enter `/media` to access any type of drive mounted there. If the medium has been detected, it is also listed in the *Places* panel. Click the respective entry to show the contents. Digital cameras can also be accessed by entering the URL `camera:/` into Dolphin's location bar. In case your camera is not automatically detected, configure it first with the KDE 4 Personal Settings or with digiKam as described in Section “Configuring Your Camera” (Chapter 23, *Managing Your Digital Image Collection*, ↑Application Guide). Navigate through the camera's directory structure until the files are shown. Use the usual Dolphin file management features to copy the files as desired.

Another way to access detected media is to click the *My Computer* icon on your desktop. The detected devices are listed in the *Disk Information* section.

NOTE: Removing Media Safely

If you want to remove or disconnect a medium from your computer, make sure that the data on the medium is currently not accessed by any application or user. Otherwise, you risk a loss of data. To safely remove the medium, proceed as follows:

1. Open a view that displays the removable medium (for example, with Dolphin or *My Computer*).
2. Right-click the medium in the *Places* panel (or below *Disk Information*) and select *Safely Remove* or *Eject*. *Safely Remove* unmounts the medium after which you can disconnect the medium from your computer. *Eject* automatically opens the CD or DVD drive of your computer.

2.6 Using Virtual Desktops

The desktop environment allows you to organize your programs and tasks on several virtual desktops between which you can switch the pager in the panel (see [Section 1.2, “Exploring the Desktop Components”](#) (page 5)). If you often run a lot of programs simultaneously, this minimizes the number of windows to arrange on your screen. You

might, for example, use one desktop for e-mailing and calendaring and another for word processing or graphics applications.

Procedure 2.4 *Moving an Application to Another Virtual Desktop*

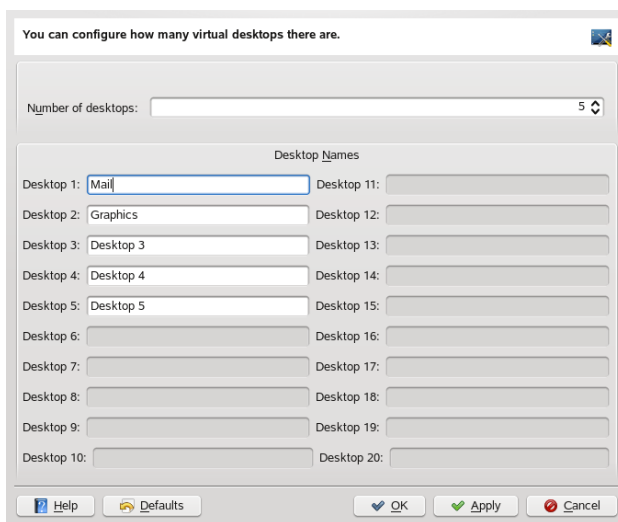
You can display a running application on one or all virtual desktops or move it to other desktops.

- 1 Open the application.
- 2 Right-click the title bar of the application.
- 3 Click *To Desktop*.
- 4 Select the desktop on which to place the application.
- 5 To switch between desktops, click the desired desktop in the pager in the panel.

Procedure 2.5 *Adding Additional Virtual Desktops*

Some users might need more desktops than provided by default. To add additional desktops:

- 1 Right-click the pager in the panel and select *Configure Desktops*. A configuration dialog appears where you can increase or reduce the number of virtual desktops. You can also change the default names of the desktop.



- 2 Click *OK* to apply the changes and to close the configuration dialog.
- 3 If you want the names of the desktops to appear in the pager rather than the number, right-click the pager and select *Pager Settings*.
- 4 From the drop-down list, select *Desktop Name* and click *OK* to apply your changes and close the dialog.

2.7 Managing Internet Connections

To surf the Internet or send and receive e-mail messages or use Instant Messengers, you must have configured an Internet connection with YaST or NetworkManager. For more details, see Section “Configuring a Network Connection with YaST” (Chapter 20, *Basic Networking*, ↑Reference) and Chapter 10, *Using NetworkManager* (↑Start-Up).

2.8 Exploring the Internet

When an Internet connection is established, either use Konqueror or Firefox for browsing. Konqueror is KDE's default Web browser but openSUSE also includes

Firefox. To start Konqueror or Firefox, press **Alt + F2** and enter `konqueror` or `firefox`.

With features like tabbed browsing, pop-up window blocking, and download and image management, both browsers combine the latest Web technologies. Their easy access to different search engines helps you to find the information you need.

For more information about Firefox, see Chapter 20, *Browsing with Firefox* (↑Application Guide). Learn more about Konqueror as a Web browser in Chapter 19, *Browsing with Konqueror* (↑Application Guide).

2.9 E-Mail and Scheduling

For reading and managing your mails and appointments, you can use Kontact as your personal information management tool (PIM). Kontact combines KDE applications like KMail, KOrganizer, and KAddressBook into a single interface. This gives you easy access to your e-mail, calendar, address book, and other PIM functionality. KMail can also manage multiple e-mail accounts, such as your private e-mail and your business ones. To start Kontact, press **Alt + F2** and enter `kontact`.

Before you can send or receive mails, you must configure an e-mail account. When starting KMail for the first time, a configuration wizard appears that assists you in setting up your account. For detailed information about configuring and using Kontact, see Chapter 11, *Kontact: E-Mailing and Calendaring* (↑Application Guide).

2.10 Instant Messaging

Kopete is an online messenger application that allows multiple partners connected to the Internet to chat with each other. Kopete currently supports a number of common messenger protocols. To be able to use instant messaging (IM), you must register with a provider offering IM services and configure a Kopete account.

To start Kopete, press **Alt + F2** and enter `kopete`. Learn more about Kopete in Chapter 15, *Instant Messaging with Kopete* (↑Application Guide).

2.11 Managing Passwords

When you enter a password in a KDE application for the first time (in KMail or Konqueror, for example), you are asked if you want to store the password in an encrypted wallet. If you click *Yes*, KWallet wizard starts by default. KWallet is a password management tool that can collect all passwords and store them in an encrypted file. For more information on how to configure and use KWallet, refer to [Chapter 7, *Managing Passwords with KWallet Manager*](#) (page 93).

Whereas KWallet is designed to centrally manage passwords for several KDE applications, Firefox also offers the ability to store data when you enter a username and a password on a Web site. If you accept by clicking *Remember*, the password will be stored on your hard disk in an encrypted format. Next time you access this site, Firefox will automatically fill in the login data.

To review or manage your passwords in Firefox, click *Edit > Preferences > Security > Saved Passwords....*

2.12 Opening or Creating Documents with OpenOffice.org

The office suite OpenOffice.org offers a complete set of office tools including a word processor, spreadsheet, presentation, vector drawing, and database components. Because OpenOffice.org is available for a number of operating systems, you can use the same data across different computing platforms. You can also open and edit files in Microsoft Office formats then save them back to this format, if needed.

Start OpenOffice.org from the main menu or click the Office icon on the desktop. You can also start individual components, like the word processor, by pressing **Alt + F2** and entering `oowriter`.

For an introduction to OpenOffice.org, see Chapter 1, *The OpenOffice.org Office Suite* (↑Application Guide) or view the help in an OpenOffice.org program.

2.13 Viewing PDF Files and Other Documents

Documents that need to be shared or printed across platforms can be saved as PDF (Portable Document Format) files, for example, in the OpenOffice.org suite. View them with Okular, the default KDE document viewer.

Start Okular from the main menu or press `Alt + F2` and enter `okular`.

To open a document, select *File > Open* and choose the desired file from the file system. Navigate through the documents by using the navigation icons at the top or bottom of the window. If your PDF document provides bookmarks, you can access them in the left panel of the viewer.

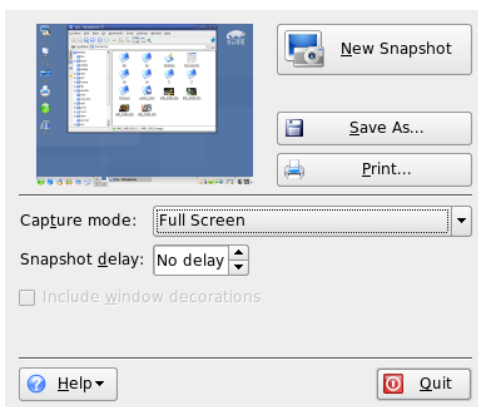
Okular also allows you to review a document by highlighting certain text parts or adding annotations. For more information about working with Okular, see Chapter 5, *Viewing PDF Files and Other Documents with Okular* (↑Application Guide).

Alternatively, you can also view PDF files with Adobe Acrobat Reader. If Acrobat Reader is not installed by default, install the `acroread` package with YaST. To start Acrobat reader, press `Alt + F2` and enter `acroread` or start the program from the main menu. Click *File > Open*, locate the desired PDF file and click *Open* to view the file.

2.14 Taking Screen Shots

With KSnapshot, you can create snapshots of your screen or individual application windows. Start the program from the main menu or by pressing `Alt + F2` and entering `ksnapshot`. On start-up, KSnapshot already takes a snapshot of the screen and displays it as preview. You can choose to save the current snapshot, to open it with a graphics application or to copy it to the clipboard. Before creating a new snapshot, check if the options in the lower part of the window match your needs. For example, to automatically capture a dialog window or a certain region (instead of the full screen), adjust the *Capture Mode*. If you need to take some other actions first (like selecting a certain object in the window), adjust the *Snapshot Delay* and choose if to *Include the window decorations* or not. Then click *New Snapshot* to take a new snapshot which you then can save or edit further.

Figure 2.3 *KSnapshot*

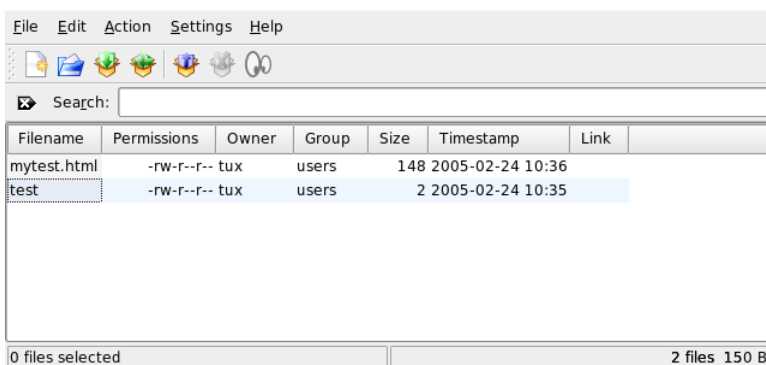


2.15 Displaying, Decompressing, and Creating Archives

To save space on the hard disk, use a packer that compresses files and directories to a fraction of their original size. The application Ark can be used to manage such archives. It supports common formats, such as `zip`, `tar.gz`, `tar.bz2`, `lha`, and `rar`.

Start Ark from the main menu or from the command line with `ark`.

Figure 2.4 *Ark: File Archive Preview*



Once you have opened an archive, perform various actions. *Action* offers options such as *Add File*, *Add Folder*, *Delete*, *Extract*, *View*, *Edit With*, and *Open With*.

Procedure 2.6 *Creating an Archive*

- 1 To create a new archive, select *File > New*.
- 2 Enter the name of the new archive in the dialog that opens and specify the format using *Filter*.

After confirming with *Save* or by pressing *Enter*, the Ark window shows an empty archive.

- 3 To fill the archive, drag and drop files and directories from the file manager into this window or click *Add File* or *Add Folder* to add the objects you want to add to the archive.
- 4 To remove a file from the archive, select the file and click *Delete*.
- 5 If all files to be archived are displayed in the window, just close Ark. Ark automatically compresses everything into the previously selected archive format and saves the archive.

Procedure 2.7 *Viewing and Extracting Archives*

- 1 To view the contents of an archive, start Ark and select *File > Open* to open the file. Alternatively, just drag the archive from an open file manager window to the Ark window.
- 2 To see a preview of individual files, select a file and click *Preview*.
- 3 To extract all files from the archive, click *Extract*.

If you want to extract individual files from the archive only, select one or more files (by keeping the *Ctrl* key pressed) and click *Extract*. In the following dialog, you can still decide to save *All Files* or the *Selected Files Only*.

- 4 Enter the path to the *Destination Folder*, select if to *Open Destination Folder After Extraction* and click *OK* to extract the files.

2.16 Creating CDs or DVDs

If you possess a CD or DVD writer, you can burn files to a CD or DVD with K3b. To start K3b, press Alt + F2 and enter `k3b`. Learn more about K3b in Chapter 28, *Burning CDs and DVDs With K3b* (↑Application Guide).

2.17 Viewing and Managing Digital Images

You can view digital images in the file manager or with Gwenview. Start Gwenview by pressing Alt + F2 and entering `gwenview`. Gwenview can load and save all image formats supported by KDE. It shows them either as thumbnails, in full screen view, or in slide show mode. When browsing JPEG images with EXIF information, Gwenview automatically rotates them according to the EXIF Orientation tag.

For managing and editing your digital images, digiKam is the right choice: download your images from the camera, edit and improve them, organize them in albums (or flag them with tags for easy retrieval, independent of folders or albums), and archive them on CD or export them to a Web image gallery.

To start digiKam, press Alt + F2 and enter `digikam`. Find an introduction to digiKam in Chapter 23, *Managing Your Digital Image Collection* (↑Application Guide).

2.18 Managing Your Music Collection

KDE's amaroK music player allows you to play various audio formats, create playlists, import music from an iPod* (or upload files to your iPod), and listen to streaming audio broadcasts of radio stations on the Internet. The file types supported depend on the engine used for amaroK. To start amaroK, press Alt + F2 and enter `amarok`. On first start, amaroK launches a *First-Run Wizard* with which to define the folders where amaroK should look for your music files. For more information about amaroK, refer to Chapter 25, *Playing Music and Movies* (↑Application Guide).

2.19 For More Information

As well as the applications described here for getting started, KDE can run a lot of other applications. Find detailed information about many important applications in the other parts of this manual.

- To learn more about KDE and KDE applications, also refer to <http://www.kde.org/> and <http://www.kde-apps.org/>.
- Communicate and discuss topics with other KDE users and get help at <http://forum.kde.org/index.php>.
- To learn more about the helper applications included in the KDE, see also <http://utils.kde.org/>.
- To report bugs or add feature requests, go to <http://bugs.kde.org/>.

Customizing Your Settings

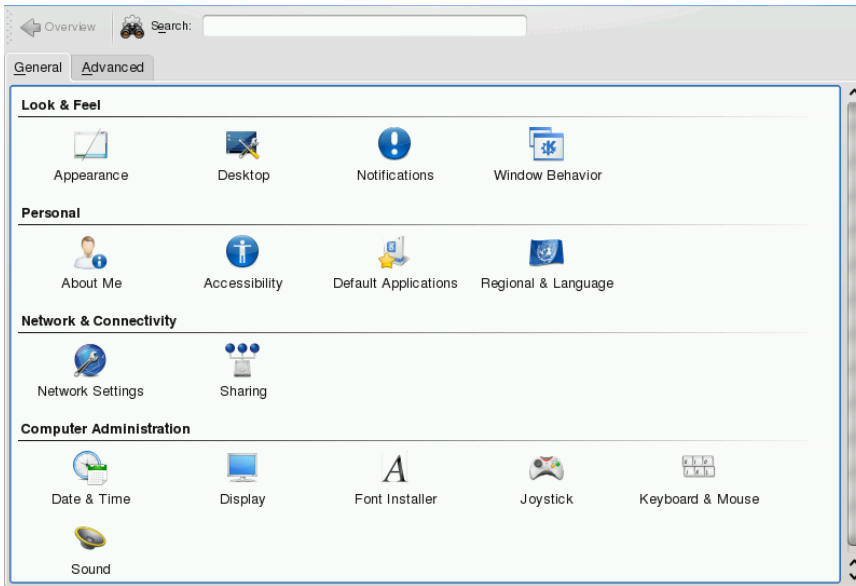
You can change the way your KDE desktop looks and behaves to suit your own personal tastes and needs. There are several ways to influence the look and feel of the KDE desktop depending on the scope of changes to make. For users, the following options are available:

- To change the appearance or behavior of individual desktop objects only, you can usually access a configuration dialog by right-clicking the object.
- To change the overall appearance and behavior of your KDE desktop, use the *Personal Settings* that in KDE 4 replace the former KDE Control Center. The Personal Settings offer access to numerous configuration modules and dialogs, some of which can also be accessed via the context menu of individual desktop objects.

3.1 The Personal Settings

The Personal Settings are the central place for users to change the overall appearance and behavior of many components of the KDE desktop. Start the Personal Settings from the main menu by selecting *Favorites > Configure Desktop*.

Figure 3.1 *Personal Settings*



TIP: Starting Individual Modules

You can also start individual modules of the Personal Settings from the shell or by adding a special applet to your panel.

To start modules from a shell, enter `kcmshell4 --list` to get a list of all modules available. Then enter `kcmshell4 module name` to start the desired module.

Alternatively, add the *Settings* applet to your panel according to the description in [Section 3.4, “Configuring the Panel”](#) (page 50).

The *General* and *Advanced* tabs provide different categories of settings. To get an impression of the numerous possibilities, just click a category icon and explore the possibilities provided there. Performing tasks in some areas of the personal settings requires system administrator (`root`) permissions.

Change the settings as desired. No changes take effect until you click *Apply*. To discard changes in the recent view that you have not yet applied, click *Reset*. To reset all items in the recent view to the default values, click *Defaults*.

To get back to the start-up view showing all categories again, click *Overview*. You can also enter a search string at the top of the window (for example, *Screen Saver*) to find the category which holds options related to the search string. Each character you enter in the *Search* field narrows down the search.

The following list introduces the major categories and highlights the most important settings you can change there. Detailed information about the settings of each category is provided by the *Help* button on each page of the settings or in the help center.

The *General* tab holds the following categories:

Look & Feel

Holds settings for the appearance of your KDE 4 desktop, such as themes, window decorations, and styles of desktop elements. Allows you to configure 3D desktops effects, increase or decrease the number of virtual (multiple) desktops, or to configure screen saver options. Cursor behavior, window behavior and the splash screen that appears on KDE start-up can also be influenced here.

Personal

Holds settings for changing the default paths to some important directories for your data: Desktop, Autostart, and Documents. Allows you to change the default applications like e-mail client, text editor, messenger, and Web browser that are called whenever a KDE application needs to start an application of these types. Define country and language-specific options here, such as default spell checking options, currency, number and date format, and keyboard layouts for different languages between which you can switch. This category also offers accessibility options for handicapped users, such as sound and keyboard options and mouse gestures.

Network & Connectivity

Allows you to set options for local network browsing and proxy servers.

Computer Administration

Allows you to configure date and time settings for your KDE desktop, to change size and orientation of your display, and to specify power management options for saving energy. Also holds settings for joysticks, keyboard and mouse. For example, you can view and modify the predefined KDE shortcuts (for example, Alt + Ctrl + L to lock the screen). You can also install personal or systemwide fonts here and configure your sound system.

On the *Advanced* tab, find the following categories:

Advanced User Settings

Use this category to configure options like encoding or which database to connect for track listings of audio CDs, to configure your digital camera, or to change the settings for KWallet (the KDE password management tool). If needed, change the default file associations to identify a file type and start an appropriate application. Define how KDE handles sessions on login or shutdown and define which applications should be started automatically.

System

Hold option for the login manager, power management and Samba.

In the following sections, find examples of how to configure some aspects of your KDE desktop that you might want to customize.

3.2 Configuring Desktop Objects

Your KDE desktop comes with a predefined set of desktop icons. By adding various objects such as folders, files, or links, you can create additional icons on your desktop and arrange them as you like.

Procedure 3.1 *Adding Program Icons to the Desktop or Panel*

To create a link to an application and place it on the desktop or the panel, proceed as follows:

- 1 Click the main menu button and browse to the desired application.
- 2 Right-click and select *Add to Desktop* or *Add to Panel* from the context menu that appears. If these menu items are not available, your desktop elements are probably locked. Unlock them first as described in [Section 1.2.1, “Locking and Unlocking Desktop Objects”](#) (page 8).

If your desktop objects are not locked, you can also just drag items from the main menu onto the desktop and drop them there to create a link to this application or folder.

- 3 To change the icon position on the desktop, left-click the icon and drag it to the desired place.

To delete an icon from your desktop, right-click the icon icon and select *Remove this Icon*.

Procedure 3.2 *Adding Widgets to the Desktop or Panel*

Widgets are small applications that can be integrated into your desktop or your panel.

- 1 To add widgets to you desktop, right-click an empty patch on your desktop and select *Add Widgets*.

To add a widget to the panel, right-click an empty patch on the panel, and select *Panel Options > Add Widgets*.

If these menu items are not available, your desktop elements are probably locked. Unlock them first as described in [Section 1.2.1, “Locking and Unlocking Desktop Objects”](#) (page 8).

- 2 In the dialog box that appears, you can limit the selection of widgets that is shown with the drop-down list at the top.



- 3 Select a widget and click *Add Widget*. The widget appears on your desktop or in your panel.
- 4 To position the widget on your desktop, left-click the widget and drag it to the desired place. To align all widgets to a grid, right-click an empty patch on the desktop and select *Align Horizontally* or *Align Vertically*.

To remove a widget from your desktop, right-click the widget and select the *Remove...* entry. Alternatively, hover your mouse pointer over the widget and click the X symbol in the frame.

Procedure 3.3 *Configuring Widgets*

In order to configure widgets, the desktop elements need to be unlocked as described in [Section 1.2.1, “Locking and Unlocking Desktop Objects”](#) (page 8).

- 1 To configure a widget, hover your mouse pointer over the widget until a translucent frame appears around the widget, showing a number of symbols.



If the frame does not appear, your widgets are probably locked. Unlock them first as described in [Section 1.2.1, “Locking and Unlocking Desktop Objects”](#) (page 8)

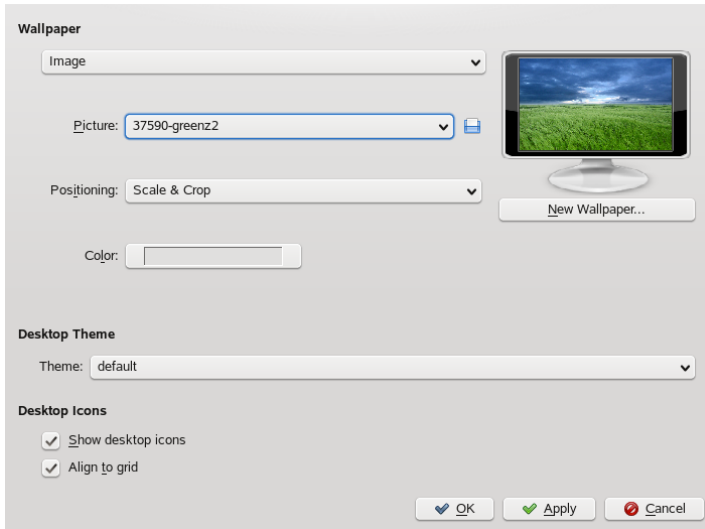
- 2 To change the widget size, left-click the star symbol in the frame and keep the mouse button pressed while moving your cursor across the desktop to scale the widget size.
- 3 To rotate the widget in any direction, left-click the arrow symbol in the frame and keep the mouse button pressed while moving your cursor in a circle across the desktop. There is a sticky boundary in the horizontal and vertical positions where you can “clamp” the widget, if you like. Of course, you can also arrange it in any tilted position.
- 4 To change the contents, settings, or properties of a widget, left-click the wrench symbol in the frame. In the configuration dialog box that appears, set the options according to your wishes.

Use the X symbol in the frame if you want to close the widget.

You can change the background colors of your desktop or select a picture to use as the background. Because KDE offers virtual desktops, you can apply these changes to one or all of your virtual desktops.

Procedure 3.4 *Changing the Desktop Background*

- 1 Right-click an empty patch of the desktop and select *Configure Desktop*. A configuration dialog appears.



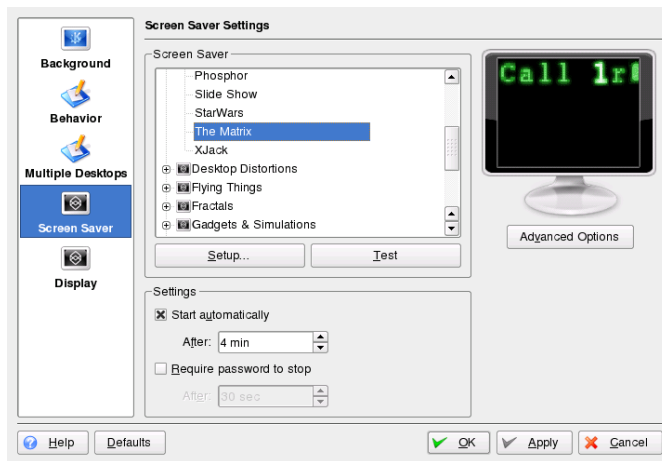
- 2 In *Settings for Desktop* select the virtual desktops to which the changes should apply.
- 3 To change the picture on the background, click *Picture* and select one of the pictures in the list. To use a custom picture, click the folder button beneath the list and select an image file from the file system.
- 4 Click *Slide Show* to have multiple images appear in a slide show mode.
- 5 If you do not want a picture on the background, click *No picture*.
- 6 From the *Options* group, click the left button below *Colors* to select the color for your background. For a multicolor background, set *Colors* to an option other than *Single Color* and click the right button below to select a second color.

- 7 Click *Apply* then *OK* to close the configuration dialog.

openSUSE® comes with predefined screen saver settings that you can adjust.

Procedure 3.5 *Configuring the Screen Saver*

- 1 Right-click an empty space on the desktop and select *Configure Desktop*.
- 2 In the dialog that opens, click *Screen Saver*.
- 3 In the list of screen savers, click a screen saver to see a preview in the right side of the dialog.

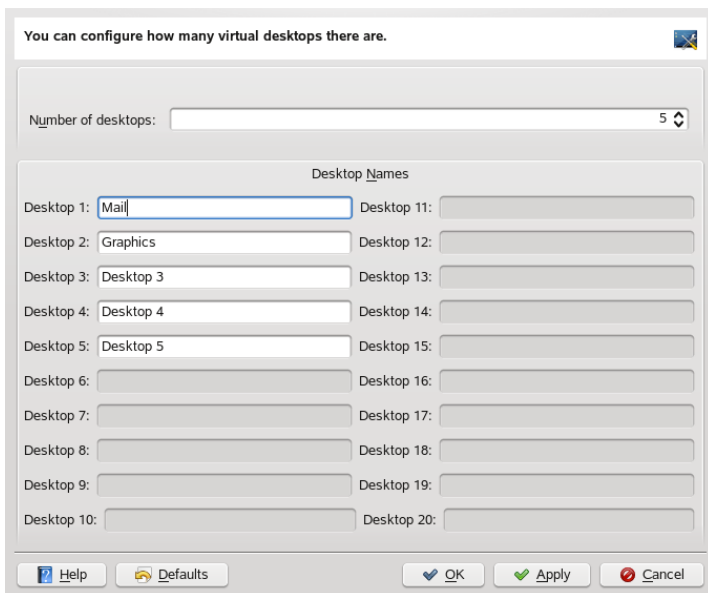


- 4 Click *Setup* to adjust options like speed or shapes.
- 5 You can also choose to view a blank screen instead of or to let KDE start a random screen saver. Find these options at the end of the screen saver list.
- 6 Under *Settings*, determine after how long a time of inactivity the screen saver should start and whether a password is required to unlock the screen after the screen saver has started.
- 7 Click *OK* to apply the changes and close the configuration dialog.

Some users might need more desktops than provided by default.

Procedure 3.6 *Adding Additional Virtual Desktops*

- 1 Right-click the desktop previewer in the panel and select *Configure Desktops*. A configuration dialog appears where you can increase or reduce the number of virtual desktops. You can also change the default names of the desktop.



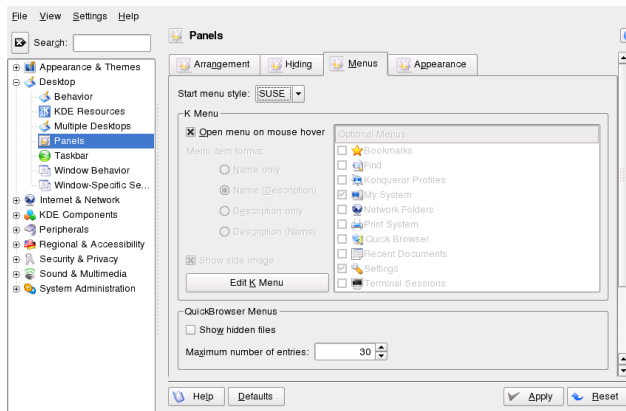
- 2 Click *OK* to apply the changes and close the configuration dialog.
- 3 For the names of the desktops to appear in the desktop previewer rather than the number, right-click the desktop previewer and select *Pager Options > Desktop Name*.

3.3 Configuring the Main Menu

There are several options how to customize your main menu. To change the overall appearance of the menu, right-click the main menu button in the panel and select either the new *SUSE Menu Style* or the traditional *KDE Menu Style*.

Procedure 3.7 Changing the SUSE Menu Style

- 1 When the menu appears in SUSE style, it usually opens when you hover the mouse over the main menu button.
 - 1a To change this default behavior, start the Personal Settings from the main menu or press `Alt + F2` and enter `kcontrol`.
 - 1b Click *Desktop > Panels*.
 - 1c Click the *Menus* tab.



- 1d Deactivate *Open menu on mouse hover* if you want the menu to open on mouse click instead.
- 2 To add applications or files and folders to your menu favorites:
 - 2a Select an application or file/folder from one of the other tabs in the main menu.
 - 2b From the context menu choose *Add to Favorites*. The object appears in *Favorites* and can be accessed from there.
 - 2c Resort entries in *Favorites* per drag and drop.

- 2d** To delete objects shown in *Favorites*, right-click the object and select *Remove From Favorites*.

When the main menu appears in KDE style, you can configure further details, for example, you can add, rename or remove menu items from the menu:

Procedure 3.8 *Changing the KDE Menu Style*

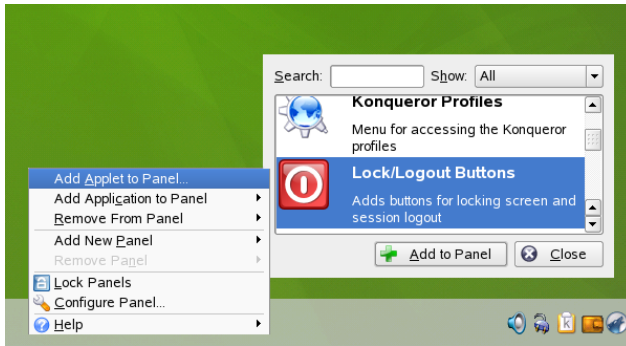
- 1** Start the Personal Settings from the main menu or press Alt + F2 and enter `kcontrol`.
- 2** Click *Desktop > Panels*.
- 3** Click the *Menus* tab.
- 4** When the *Start menu style* is set to *KDE*, you can define whether you want to see the applications names or the descriptive text (or both) in the main menu. Select from *Name only*, *Name (Description)*, *Description only*, and *Description (name)*.
- 5** If you want to change a menu item, click *Edit K Menu*. The K Menu Editor shows a list of menu items on the left.
 - 5a** Click the item in the list and change its options on the right.
 - 5b** You can add new menu items, submenus, or separators with the *File* menu or the toolbar.
 - 5c** To cut, copy, paste, or delete objects in the main menu, use the *Edit* menu or the icons in the toolbar.
 - 5d** To save your changes in the K Menu Editor, click *File > Save*.
 - 5e** Quit K Menu Editor with *File > Quit*.
- 6** To apply all of your changes in the *Menus* tab and close the Personal Settings, click *Apply*.

3.4 Configuring the Panel

You can add the following objects to your panel: applications, applets (mini-programs) and further panels. Applications and applets can either be added to the quick launch area or the system tray in the main panel or in additional panels. Panel elements and additional panels can be moved to different places or be completely removed at any time.

Procedure 3.9 *Adding and Removing Panel Elements*

- 1** Right-click an empty patch of the panel.
- 2** To add a new application to the panel:
 - 2a** From the context menu, select *Add Application to Panel*.
 - 2b** Select the application to add from one of the categories of the submenu. The application icon is inserted into the panel.
 - 2c** To change the icon for the application, right-click the button and select *Configure Application Button*. By clicking the application icon in the dialog box that appears, open a new window in which to select a different icon.
 - 2d** To remove the icon from the panel, right-click the icon and select *Remove Button*.
- 3** To add a new applet to the panel:
 - 3a** From the context menu, select *Add Applet to Panel*.
 - 3b** In the dialog box that appears, select the applet to add and click *Add to Panel*. The applet is inserted into the panel.



- 3c To remove the applet from the panel, right-click the icon and select *Quit*. If the context menu of the applet does not provide a *Quit* menu item, hold the mouse pointer over the left-side boundary of the area and right-click the small black arrow displayed there. Select *Remove*.
- 4 You can also add additional panels of different types. To do so, right-click an empty patch of the panel and select *Add Panel*. Choose the type of panel to add from the submenu.
- 5 To remove the additional panel, right-click an empty patch of a panel, select *Remove Panel* and choose the panel to remove from the desktop.

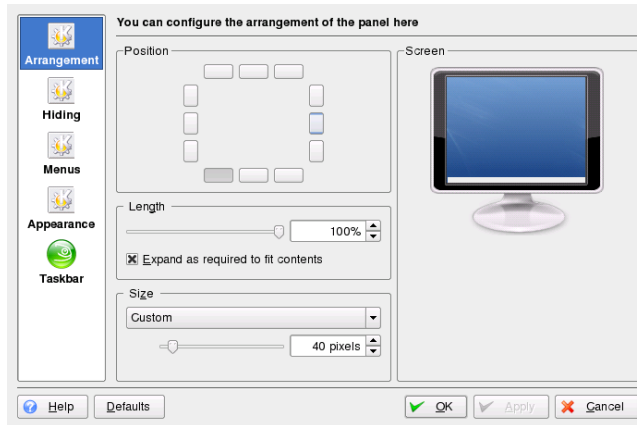
Procedure 3.10 *Moving Elements within Panels*

- 1 To move an application icon to a different position in the panel, right-click the icon and select *Move*. The mouse pointer changes into a cross-hair. Drag the pointer to the place in the panel where you want to insert the icon then press the left mouse button. The icon is inserted at the new position.
- 2 In the same way, you can also move areas of the panel, such as the desktop pre-viewer, the taskbar, and the system tray: Hold the mouse pointer over the boundary of the area and click the small black arrow displayed there. From the context menu, select *Move*. Click again to insert the area at the new position.

You can configure many aspects of the main panel and of additional panels. For example, you can change size, length, and position of a panel or activate transparency effects. You can also influence the taskbar behavior.

Procedure 3.11 Changing Panel Appearance and Behavior

- 1 Right-click an empty patch of the panel and select *Configure Panel*. A dialog opens in which you can configure several aspects of the panel. To access the different categories, click one of the icons at the left window pane. By default, the dialog shows the options of the *Arrangement* category.



- 2 If you added additional panels, a list appears at the top of the window, showing the available panels. Select the panel to configure.
- 3 If desired, choose a different position on the desktop, adjust the panel length, or increase or decrease the panel size and *Apply* your settings.
- 4 To activate or deactivate automatic hiding of the panel or change the default hiding options, click *Hiding* on the left window pane. Set the options according to your wishes and click *Apply*.
- 5 To change the color of the panel or to enable transparency or background images for the panel, click *Appearance*.
- 6 Below *Button Backgrounds*, you can choose a background for different parts of the panel. To color a part of the panel, choose *Custom Color* from the list for the respective button and click the button on the right to choose a color.

- 7 To make the panel appear transparent, activate *Enable transparency*. To increase visibility of the transparent panel also for very dark or very light backgrounds, click *Advanced Options* and set a color and the amount of tinting for the panel. *Apply* your changes.
- 8 To change the default behavior of the taskbar, click *Taskbar* on the left window pane.
- 9 To make the taskbar show only the applications from the currently active desktop instead of all applications, deactivate *Show windows from all desktops*.
- 10 Change the other taskbar options, if desired, and click *Apply*.
- 11 When all panel options are set according to your preferences, leave the configuration dialog with *OK*.

3.5 Configuring KDE Behavior

With the Personal Settings you can not only modify the appearance of objects, but also change the behavior of some components. In the following, find some examples.

Procedure 3.12 *Changing the Cursor Behavior*

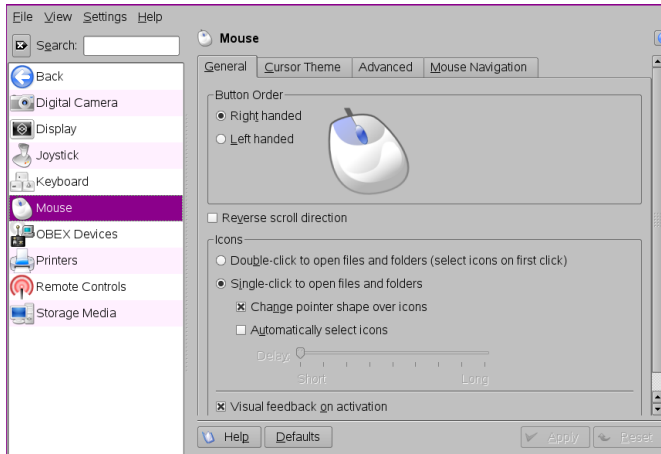
If you want to deactivate the bouncing cursor that shows when starting an application from the graphical user interface, proceed as follows:

- 1 Open the Personal Settings and select *Appearance & Themes > Launch Feedback*.
- 2 From the drop-down list, select another option for *Busy Cursor*.
- 3 Click *OK* to apply the changes and close the configuration dialog.

You can set a number of mouse options in the Personal Settings, from cursor themes to acceleration and double-click intervals. You can also change the default Linux behavior (use single mouse-click to open files or folders) to a double-click option (like in Microsoft Windows).

Procedure 3.13 Adjusting the Mouse Settings

- 1 Open the Personal Settings and click *Peripherals > Mouse*.

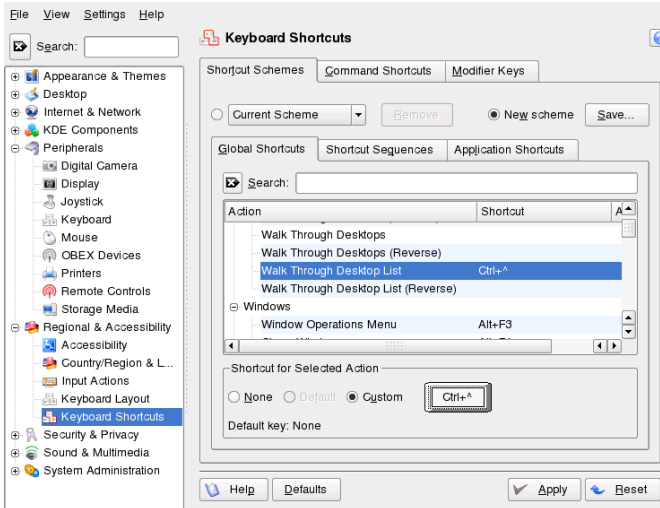


- 2 To switch to double-clicks to open files and folders, select the corresponding option on the *General* tab.
- 3 To change the mouse pointer appearance, switch to the *Cursor Theme* tab and select a different cursor theme.
- 4 To change the default values of double-click intervals or the distance that the pointer moves over the screen on movement of the mouse, adjust the settings on the *Advanced* tab.
- 5 Click *OK* to apply the changes and close the configuration dialog.

KDE comes with a set of predefined keyboard shortcuts. You can easily create more keyboard shortcuts or change existing shortcuts, especially if they should conflict with other application-specific shortcuts. KDE also allows you to store more than one scheme of shortcuts.

Procedure 3.14 Modifying KDE Keyboard Shortcuts

- 1 Open the Personal Settings and click *Regional & Accessibility > Keyboard Shortcuts*.



- 2 To switch from the default scheme to a Windows or Mac based scheme, for example, click *Current Scheme* and select a different scheme.
- 3 Browse through the list of non-application-specific KDE shortcuts on the *Global Shortcuts* tab. To filter for certain keywords, enter a search string in the search field above.
- 4 For shortcuts for switching between different desktops or windows see the *Shortcut Sequences* tab.
- 5 To view or change application-specific shorts, select the *Application Shortcuts* tab.
- 6 To change or add a shortcut, select an action in the list and click *Custom*. A new dialog opens.
- 7 To enter a shortcut, just press the desired key or key combination. If this shortcut cannot be accepted or in case of conflict with another existing shortcut, a notifi-

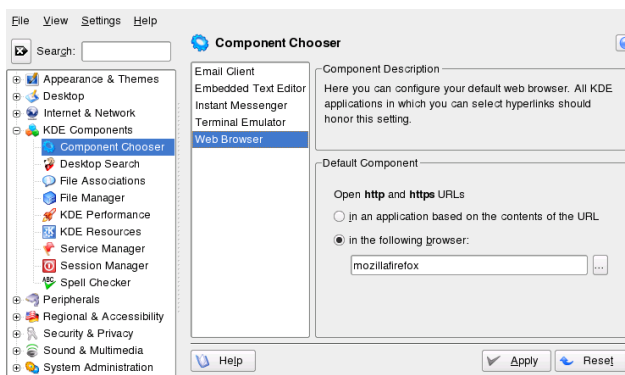
cation shows. If your input was successful, the new or modified shortcut appears in the list.

- 8** To save the altered settings, click *Apply*. To reset all shortcuts to the default values, click *Defaults* then *Apply*.

When you click a link to a Web page, KDE opens the Konqueror Web browser by default, when you click an e-mail address, KMail starts.

Procedure 3.15 *Changing the Default Web or E-Mail Application*

- 1** To change this behavior and set your preferred Web browser or e-mail client as default, open the Personal Settings and click *KDE Components* > *Component Chooser*.
- 2** To change the Web browser:
 - 2a** In the list of components, select *Web browser*.
 - 2b** Select *Open http and https URLs in the following browser* and click the browse button beneath.
 - 2c** A dialog opens, showing the main menu structure. Select the Web browser to set as default and click *OK*. The component chooser now shows the selected application in the display field.

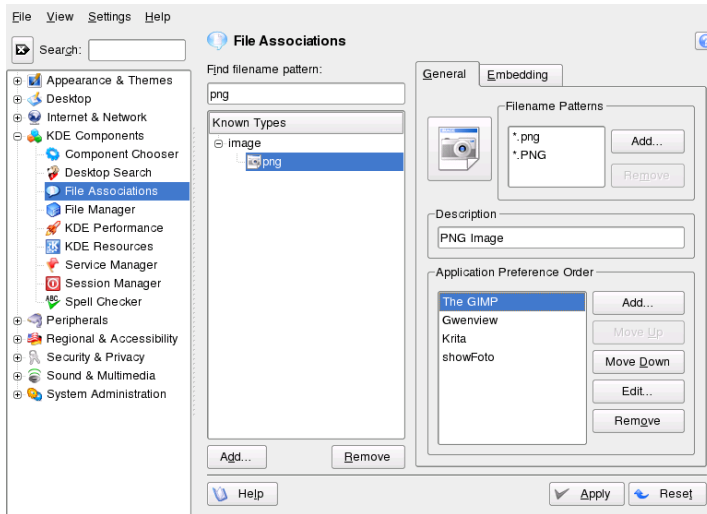


- 3** To change the e-mail client:

- 3a** In the list of components, select *Email Client*.
- 3b** Select *Use a different email client* and click the browse button.
- 3c** A dialog showing the main menu structure opens. Select the e-mail client to set as default and click *OK*. The component chooser now shows the selected application in the display field.
- 4** If desired, change other default applications for KDE, like the application for the terminal window or the instant messenger client.
- 5** When all options are set according to your wishes, click *Apply*.

Similar to setting the default Web browser or e-mail application, you can change file associations in KDE. File associations determine which application should be used to open a file, for example, if you want to start a file from Konqueror.

- 1** Open the Personal Settings and click *KDE Components > File Associations*.
- 2** To search for an extension, enter the extension in *Find Filename Pattern*. Only file types with a matching file pattern appear in the list. For example, to modify the application for *.png files, enter png in *Find Filename Pattern*.
- 3** In the *Known Types* list, click the file type to open the setting dialog for this file type. You can change the icon, the filename patterns, description, and the order of the applications.



If your tool is not listed, click *Add* in *Application Preference Order* then enter the command.

To change the order of the list entries, click the program to move then give it a higher or lower priority by clicking *Move Up* or *Move Down*. The application listed at the top is used by default when you click a file of this type.

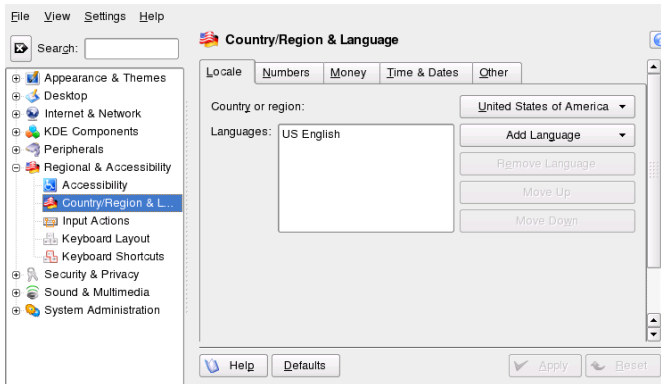
- 4 If you need a file type that is not listed in the *Known Types* list, click *Add* to open a dialog where you can select a group and enter a type name. The group determines the main type, for example, audio, image, text, or video. Your file type can usually be assigned to one of these.
 - 4a Click *OK* then determine the extensions of the filename.
 - 4b Specify a description in the text field and select which application to use.
- 5 When all options are set according to your wishes, click *Apply*.

3.6 Configuring System and Security Aspects

To adjust settings such as time and date format, number format, or currency, select the desired country as the default country in KDE. If more than one system language is installed on your computer, you can also select different languages in which KDE should show the graphical user interface and application interfaces.

Procedure 3.16 *Adjusting Regional Settings*

- 1 To set your default country options, open the Personal Settings and select *Regional & Accessibility > Country/Region & Language*.



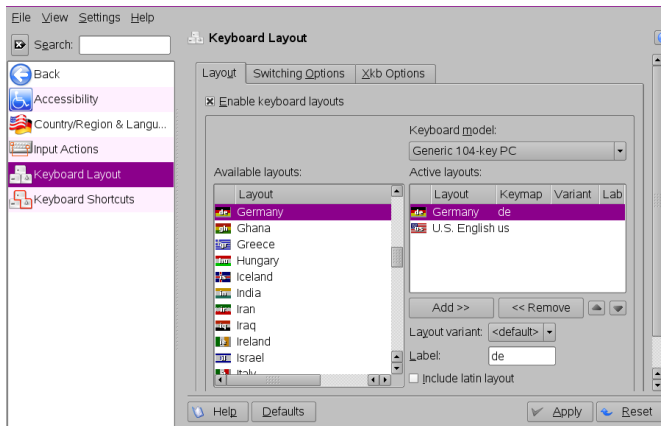
- 2 From *Country or Region*, select the desired country. If the language of the country is installed on your system, KDE automatically sets the language as the default language and shows it at the top position in the *Languages* list.
- 3 If needed, adjust the other country-dependent options, such as number or time and date format, on the other tabs.
- 4 If more than one language is installed on your system (as secondary languages with YaST) and you want to change the graphical interface of KDE to a different language, click *Add Language* on the *Locale* tab.

- 5 Choose *Other* to open a list of other languages installed on your system. Select the language for the graphical user interface. The new language is now shown at the top position in the *Language* list.
- 6 To confirm the changes, click *Apply*. All newly started applications or desktop objects now appear in the new language.
- 7 To switch to another language, re-sort the languages in the *Languages* list until the desired language is at the top position and apply your changes.

If you often need to enter texts in various languages, you may want to add different language layouts for your keyboard. You can then easily switch layouts when needed.

Procedure 3.17 Adding Keyboard Layouts

- 1 To add additional keyboard layouts, open the Personal Settings and select *Regional & Accessibility > Keyboard Layout*.
- 2 Activate *Enable keyboard layouts* at the top.
- 3 In the list of *Available layouts*, select a layout. Click *Add* to transfer it to the list of *Active layouts*.



- 4 If you added several layouts, you can change the sorting order with the help of the up and down arrow buttons.

- 5 Depending on the options you choose in the *Switching Options* tab an indicator or country flag appears in the system tray. With a click on the icon you can change between different keyboard layouts after you confirmed your changes with *Apply*.

By default, openSUSE provides various fonts commonly available in different file formats (Bitmap, TrueType, etc.). These are known as *system fonts*. Users can additionally install their own fonts from various collections. Such user-installed fonts are, however, only visible and available to the corresponding user.

Procedure 3.18 *Installing New Fonts*

To check which fonts are currently available, type the URL `fonts:/` into the address field of a Konqueror session. This displays two windows: *Personal* and *System*. User-installed fonts are installed to the folder *Personal*. Only `root` can install to the *System* folder.

To install new fonts, proceed as follows:

- 1 Start the control center from the main menu or press `Alt + F2` and enter `kcontrol`.
- 2 Click *System Administration > Font Installer*.
- 3 To update system fonts, click *Administrator Mode* and enter the `root` password. Then proceed as described below.
- 4 To install fonts as a user, click *Add Fonts*.
- 5 In the dialog that opens, select one or more fonts for installation. The marked fonts are then installed to your personal font folder. Selecting a font shows a preview.

KDE runs a session manager that starts after your username and password are authenticated by the login process. It lets you save the status of a certain session and return to that status the next time you log in. For example, it can automatically start the applications that you were running in the most recent session or when you manually saved a session. It can save and restore the following settings:

- Appearance and behavior settings, such as fonts, colors, and mouse settings.
- Applications that you were running, such as a file manager or OpenOffice.org.

NOTE: Saving and Restoring Applications

You cannot save and restore applications that Session Manager does not manage. For example, if you start the vi editor from the command line in a terminal window, Session Manager cannot restore your editing session.

Procedure 3.19 *Adjusting the Session Handling*

- 1 To change the session handling options, open the Personal Settings and click *KDE Components > Session Manager*. The groups *General* and *Default Shutdown Option* hold options for the confirmation dialog that usually appears on logout.
- 2 By default, Session Manager restores the applications that were running when you logged out from the previous session, enabling an automatic start of these applications.

To be able to save a certain session manually and restore this session each time you log in to KDE, select *Restore manually saved sessions*. This adds a new menu item, *Save Session*, to your main menu. After a session is saved, KDE automatically restores the saved session on each login.

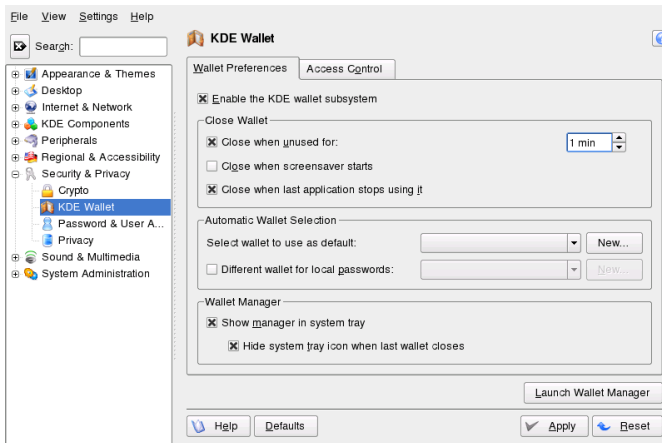
- 3 To start with a “fresh” session each time you log in, select *Start with an empty session*.
- 4 Click *Apply* to confirm your changes.

By default, you define the settings for KWallet password manager with the help of a wizard when you use KWallet for the first time. You can adjust the initial settings at any time to increase security.

Procedure 3.20 *Adjusting KWallet Settings*

- 1 If KWallet is already started, click the KWallet symbol in the panel and select *Configure Wallet*. Otherwise, open KDE control center and click *Security & Privacy > KDE Wallet*.
- 2 If KWallet Manager is not yet enabled, activate the respective check box at the top.
- 3 By default, a wallet is closed when the last application stops using it. To increase security, you can set a more restrictive policy: to close a wallet automatically

after a period of inactivity or after start-up of the screen saver, activate the respective check boxes.



- 4 To remove the KWallet icon from the panel, deactivate *Show manager in system tray*. You can then only access KWallet from the main menu.
- 5 By default, KWallet stores all passwords in one wallet named `kdewallet`. To store local and network-related passwords in different wallets, activate *Different wallet for local passwords*. Click *New* to create an additional wallet, if needed.

Part II. Managing Files and Resources

Accessing Network Resources

From your desktop, you can access files and directories or certain services on remote hosts or make your own files and directories available to other users in your network. openSUSE® offers various different ways of accessing and creating network shared resources:

Network Browsing

Your file manager, Konqueror, lets you browse your network for shared resources and services. Learn more about this in [Section 4.2, “Accessing Network Shares”](#) (page 69).

Sharing Folders in Mixed Environments

Using Konqueror, configure your files and folders to share with other members of your network. Make your data readable or writable for users from any Windows or Linux workstation. Learn more about this in [Section 4.3, “Sharing Folders in Mixed Environments”](#) (page 70).

Managing Windows Files

openSUSE can be configured to integrate into an existing Windows network. Your Linux machine then behaves like a Windows client. It takes all account information from the Active Directory domain controller, just as the Windows clients do. Learn more about this in [Section 4.4, “Managing Windows Files”](#) (page 73).

Configuring and Accessing a Windows Network Printer

You can configure a Windows network printer through the KDE Control Center. Learn how to configure this in [Section 4.5, “Configuring and Accessing a Windows Network Printer”](#) (page 76).

Configuring Shortcuts to Network Folders

By creating shortcuts to remote network folders (FTP, WebDAV, Windows Network Drives, and SSH), interacting with them can be greatly simplified. Learn how to configure this in [Section 4.6, “Configuring Shortcuts to Network Folders”](#) (page 78).

Configuring a Small Web Server

If you need a simple way to share information with others, set up a lean Web server. Learn how to do this in [Section 4.7, “Configuring and Using a Small Web Server”](#) (page 80).

4.1 General Notes on File Sharing and Network Browsing

Whether and to which extent you can use file sharing and network browsing on your machine and in your network highly depends on the network structure and on the configuration of your machine. Before setting up either of them, contact your system administrator to make sure that your network structure supports this feature and to check whether your company's security policies permit it.

Network browsing, be it SMB browsing for Windows shares or SLP browsing for remote services, relies heavily on the machine's ability to send broadcast messages to all clients in the network. These messages and the clients' replies to them enable your machine to detect any available shares or services. For broadcasts to work effectively, your machine must be part of the same subnet as all other machines it is querying. If network browsing does not work on your machine or the detected shares and services do not match with what you expected, contact your system administrator to make sure that you are connected to the appropriate subnet.

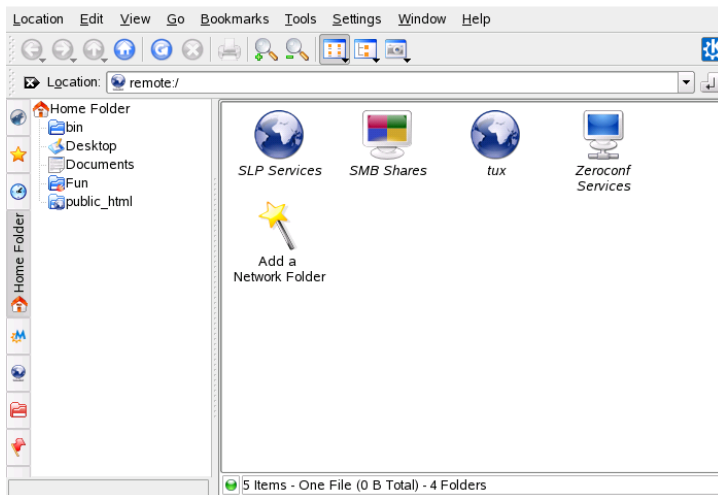
To allow network browsing, your machine needs to keep several network ports open to send and receive network messages that provide details on the network and the availability of shares and services. The standard openSUSE is configured for tight security and has a firewall up and running that protects your machine against the Internet. To adjust the firewall configuration, you would either need to ask your system administrator to open a certain set of ports to the network or to tear down the firewall entirely according to your company's security policy. If you try to browse a network with a restrictive firewall running on your machine, Konqueror warns you about your security restrictions not allowing it to query the network.

4.2 Accessing Network Shares

Networking workstations can be set up to share folders. Typically, files and folders are marked to let remote users access them. These are called *network shares*. If your system is configured to access network shares, you can use your file manager to access these shares and browse them just as easily as if they were located on your local machine. Whether you have only read access or also write access to the shared folders depends on the permissions granted to you by the owner of the shares.

To access network shares, click the *Network Browsing* icon on your desktop or open Konqueror and enter `remote: /` in the location bar. Konqueror then opens a virtual folder that displays the network share types that you can access. Click a network resource type then click the network share to access. You might be required to authenticate to the resource by providing a username and password.

Figure 4.1 *Network Browsing*

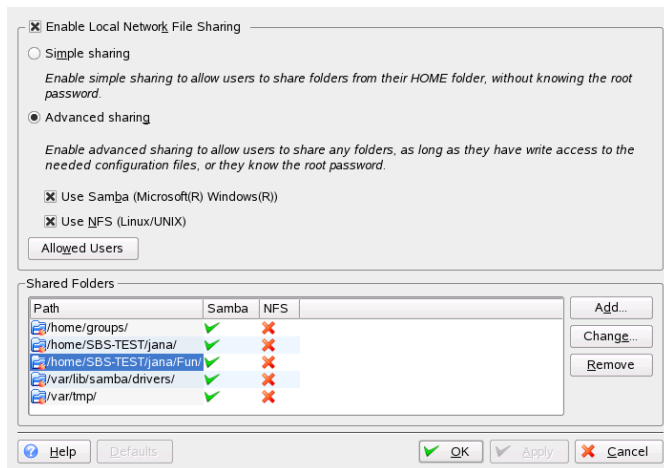


4.3 Sharing Folders in Mixed Environments

Sharing and exchanging documents is a must-have in corporate environments. Konqueror offers you file sharing with Samba, which makes your files and folders available to both Linux and Windows users. To configure Samba file sharing with Konqueror, proceed as follows:

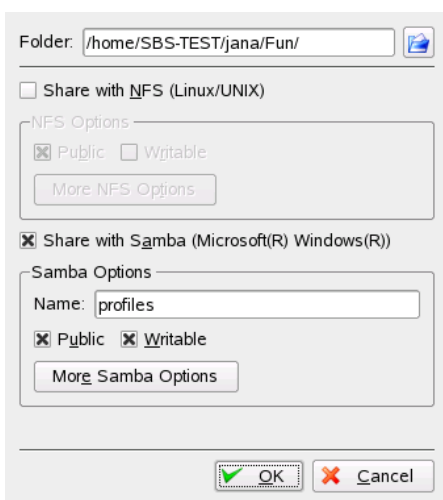
- 1 Open Konqueror.
- 2 Select *Home Folder*, right-click the window background and then select *Properties* from the context menu.
- 3 In the *Properties* dialog, click the *Share* tab. When file sharing is not yet generally enabled, you are informed about this on the tab. To enable file sharing or select the files to share, click *Configure File Sharing* and enter the `root` password.
- 4 To enable or disable file sharing, select or deselect *Enable Local Network File Sharing*.

Figure 4.2 *Enabling File Sharing*



- 5 Select the appropriate sharing option: *Simple sharing* or *Advanced sharing*.
- 6 To limit the number of users allowed to share folders to certain groups, click *Allowed Users*, select *Only users of a certain group are allowed to share folders*, click *Choose Group*, and select the appropriate group from the list in the window that opens.
- 7 Add the folder to share to the list of shared items at the bottom of the dialog by clicking *Add* and specifying the folder's exact path.

Figure 4.3 *Detailed Sharing Options*



- 8 Activate *Share with Samba* to enable Samba file sharing. If needed, apply some fine-tuning to the Samba options:

Name

Specify a name other than the preset default.

Public/Writable

Determine which kind of access to grant others to your share. You can grant users full read and write access or limit their access to just reading your shares.

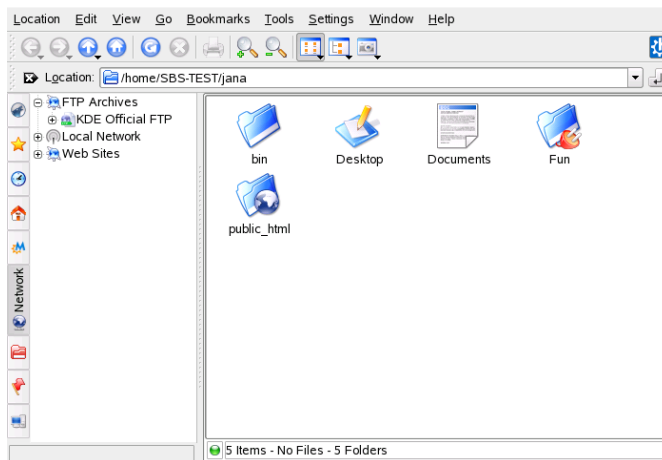
More Samba Options

These contain basic settings like name, an optional comment, and basic access rights as well as user and security settings and an option to hide particular files and subfolders in the shared folder.

- 9 Apply your settings and leave the file sharing dialog with *OK*.

The folder icon now appears in Konqueror with a plug.

Figure 4.4 *Shared Folder*



To revoke the share, enter the file sharing dialog again and remove the folder from the list of shared items. The folder icon then appears without a plug.

Other members of your network can reach your share by entering `smb: /` in the location bar of Konqueror and clicking the appropriate workgroup icon and hostname.

IMPORTANT: Samba Domain Browsing

Samba domain browsing only works if your system's firewall is configured accordingly. Either disable the firewall entirely or assign the browsing interface to the internal firewall zone. Ask your system administrator about how to proceed.

4.4 Managing Windows Files

With your openSUSE machine being an Active Directory client you can browse, view, and manipulate data located on Windows servers. The following examples are just the most prominent ones:

Browsing Windows Files with Konqueror

Use Konqueror's `smb : /` browsing option to browse your Windows data.

Viewing Windows Data with Konqueror

Use Konqueror to display the contents of your Windows user folder just as you would for displaying a Linux directory. Create new files and folders on the Windows server.

Manipulating Windows Data with KDE Applications

KDE applications, such as the Kate text editor, allow you to open files on the Windows server, manipulate them, and save them to the Windows server.

Single-Sign-On

KDE applications, including Konqueror, support Single-Sign-On, which means that to access other Windows resources, such as Web servers, proxy servers, or groupware servers like MS Exchange, you do not need to reauthenticate. Authentication against all these is handled silently in the background once you provided your username and password on login.

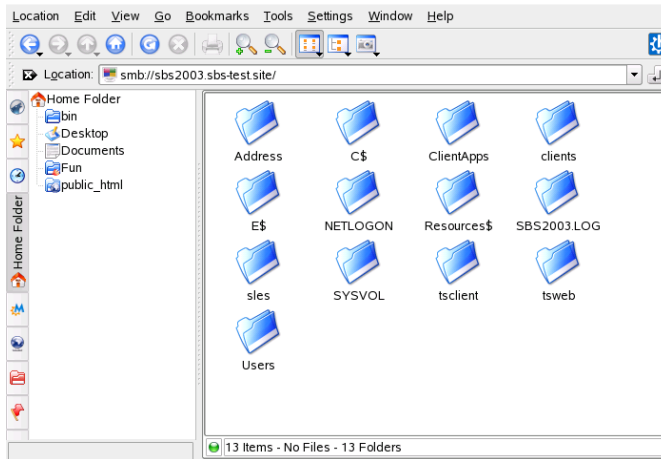
To access your Windows data using Konqueror, proceed as follows:

- 1 Press `Alt + F2` and enter `smb : / / /`

This opens a Konqueror window displaying all Samba workgroups and domains that could be found in your network.

- 2 Click the icon of the workgroup or domain of your AD server.

Figure 4.5 *Browsing Data on the AD Server*



- 3 Click the *Users* folder and select your personal user folder icon. The contents of your *My Documents* folder are displayed.

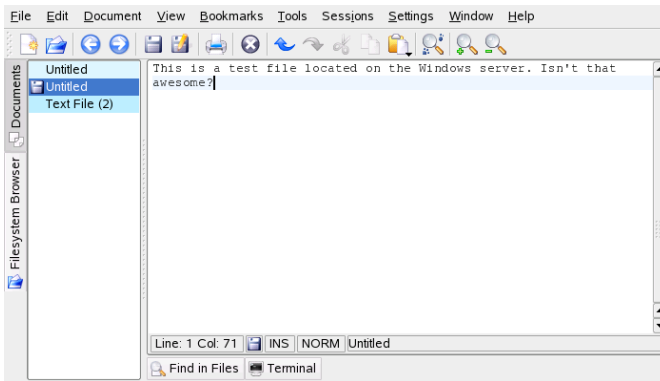
To create folders in your Windows user folder using Konqueror, proceed as you would when creating a Linux folder:

- 1 Right-click the background of the Konqueror folder view to open the menu.
- 2 Select *Create New > Folder*.
- 3 Enter the new folder's name when prompted to do so.

To create a file on the AD server, proceed as described in the following example for the Kate text editor.

- 1 Press **Alt + F2** and enter `kate`.
- 2 Enter your text.

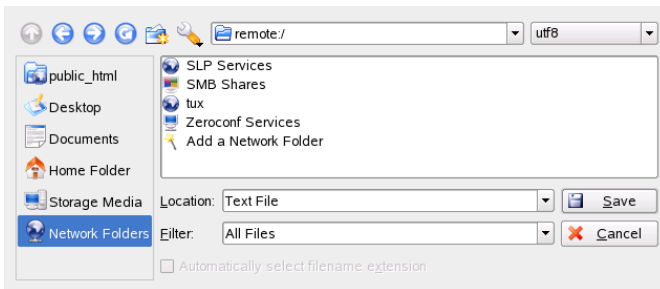
Figure 4.6 *Editing a Text File with Kate*



3 To save the newly created text, select *Save as*.

4 Click the *Network Folders* icon to the left and select *SMB Shares*.

Figure 4.7 *Saving a File to a Remote Windows Folder*



5 Navigate to your Windows folder.

6 Enter the filename and click *Save*.

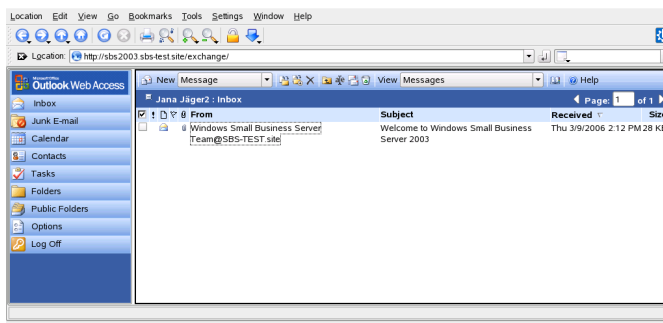
The file is saved on the Windows server.

Make use of Konqueror's Single-Sign-On support, as in the following example—Web access to your MS Exchange mailbox:

- 1 Make sure that you have a valid MS Exchange account under your current Windows user identity.
- 2 Request the Exchange server's address from your system administrator.
- 3 Press Alt + F2 and enter `konqueror`
`http://address_exchange_server`.

You are logged in to your Exchange account without having to reauthenticate.

Figure 4.8 *Accessing MS Exchange through Konqueror*



- 4 Write or read your e-mails and log out as usual.

4.5 Configuring and Accessing a Windows Network Printer

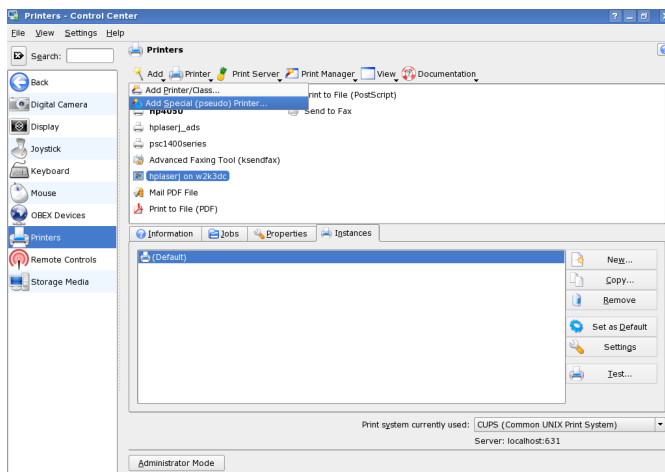
Being part of a corporate network and authenticating against a Windows Active Directory server, you can access corporate resources, such as printers. KDE allows you to configure printing from your Linux client to a Windows network printer.

To configure a Windows network printer for use through your Linux workstation, proceed as follows:

- 1 Start the KDE Control Center from the main menu.

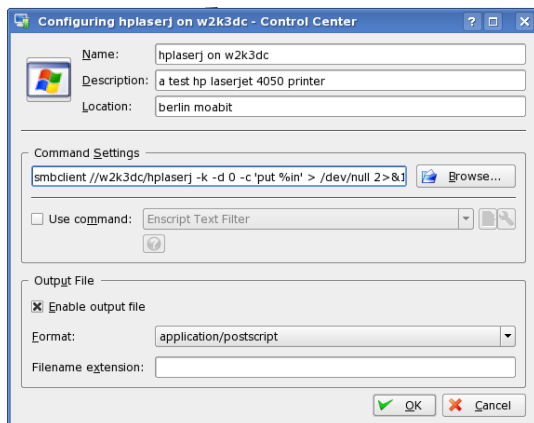
2 Select *Peripherals > Printers*.

Figure 4.9 Adding a Printer



3 Select *Add > Add Special (pseudo) Printer*.

Figure 4.10 Adding Printer Details



4 Enter the printer's name, a short description, and its location.

- 5 Enter a command line similar to the following example in *Command Settings*:

```
smbclient //domain/printer -k -d 0 -c 'put %in' > /dev/null 2>&1
```

Replace *domain* and *printer* with the exact values matching your setup.

- 6 Check *Enable output file* and select *application/postscript* to pipe all your print jobs to a postscript file.
- 7 Leave the printer configuration with *OK*.
- 8 Leave the KDE Control Center with *File > Quit*.

The printer is ready for use.

To print to the Windows network printer configured above, just select it from the list of available printers in KPrinter.

4.6 Configuring Shortcuts to Network Folders

With KNetAttach, you can also add new network folders to this view by clicking *Add a Network Folder* in a Konqueror `remote:/` view. A wizard opens where you can select the type of network folder to access and enter the details, such as a name for the network folder, the address of the server (either the IP address or domain name), the login name, the port, and the path to folder to access.

Figure 4.11 *Adding a Network Folder*

Network Folder Information

Enter a name for this *Secure shell connection* as well as a server address, port and folder path to use and press the **Save & Connect** button.

Name:

User:

Server:

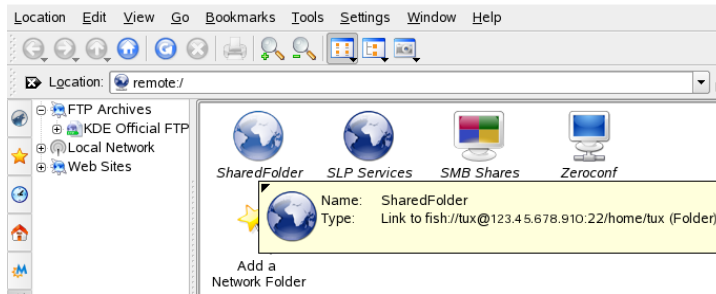
Port:

Folder:

☒ Create an icon for this remote folder

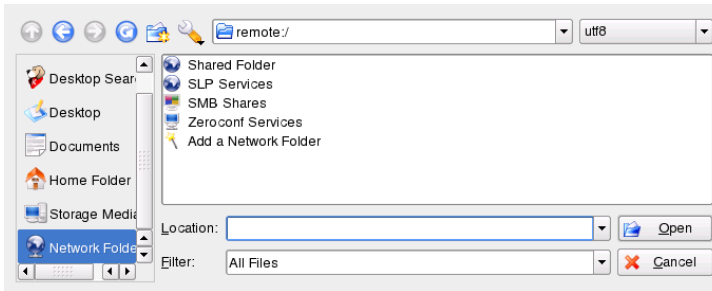
After finishing, you can access the network share in Konqueror by clicking the newly created link instead of entering a lengthy URL for this share in the location bar.

Figure 4.12 *New Network Folder*



If you add a network folder in this way, you can also access this folder easily when opening or saving a file from a KDE application. If you click *Network Folders* in the left-hand bar of an *Open File* or a *Save File* dialog, the network folder you added appears.

Figure 4.13 *Opening a File from a Network Share*



TIP: Linking to Network Shares on the Desktop

For quick access to network shares you need very often, you can also create links to these resources on your desktop. To do so, select the desired resource in Konqueror and drag it onto your desktop while keeping the left mouse button pressed. From the context menu, select *Link Here*. A new icon appears on your desktop. If you click that icon, Konqueror opens and displays the content of this directory.

4.7 Configuring and Using a Small Web Server

The `kpf` utility provides simple file sharing using HTTP (*Hyper Text Transfer Protocol*), which is the same protocol used by Web sites to provide data to your Web browser. `kpf` is strictly a public file server, which means that there are no access restrictions to shared files. Whatever you select for sharing is available to anyone.

IMPORTANT: Security Considerations

Before setting up a file server with kpf, check with your system administrator whether your company's security policies allow this. You should never set up a file server in a corporate or private environment if you are not entirely sure that your network is protected by an outer firewall. Otherwise you might risk accidentally leaking sensitive information to the Web. In addition to that, any Web server is a potential target for hacker's exploits. Setting up a Web server in a secure way is a very hard job and kpf was not designed to act as such a Web server.

kpf is designed to be used for sharing files with friends, not to act as a fully-fledged Web server like Apache. kpf was primarily conceived as an easy way to share files with others while chatting on IRC (Internet Relay Chat, or chat rooms).

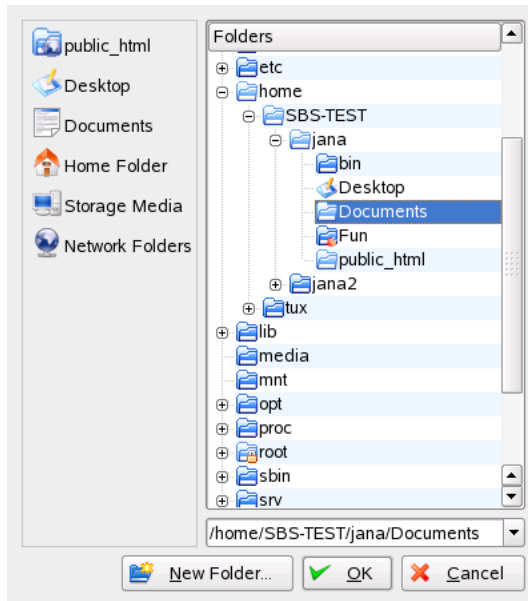
kpf is typically set up to serve files from a `public_html` folder in your home directory. For example, if you want to make a file available to some people with whom you are chatting online, you can use kpf to copy the file into your `public_html` folder and announce to those listening that your file is available at `http://www.mymachine.net:8001/thefile` (rather than send them each an e-mail with the file attached).

- 1 Right-click the bottom panel in KDE then click *Add Applet to Panel* and select *Public File Server*.

A new icon depicting a small globe appears on the bottom panel.

- 2 Right-click the icon then click *New Server*.
- 3 Specify the directory containing the files you want to share then click *Next*.

Figure 4.14 *Selecting the File Server Root Directory*



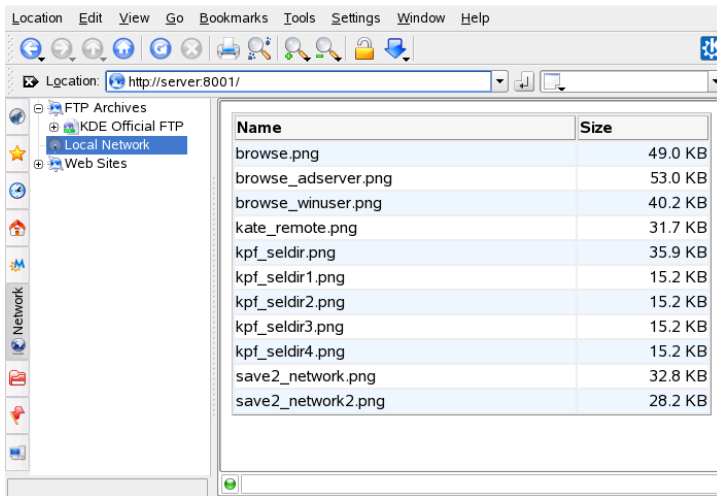
All files in the folder and its subfolders, including hidden files (files that start with a dot) and symbolic links, are made publicly available, so be careful not to share sensitive information, such as passwords, cryptographic keys, your address book, or documents private to your organization. Make sure that any symbolic links included do not point outside your published folder, because that would give others access to areas of your system that are not intended for public viewing.

4 Complete the remainder of the *New Server*.

The directory icon now appears in Konqueror with a world icon at the bottom right side.

Other parties wishing to connect to this server should just enter a URL like `http://hostname:8001` into their browsers. An overview of the published content is displayed.

Figure 4.15 *Published Contents*



On the hosting machine, you can monitor the network traffic on your file server by right-clicking the globe icon and selecting *Monitor*. A short set of statistics similar to the following is given.

Figure 4.16 *File Server Statistics*

Status	Progress	File Size	Bytes Sent	Response	Resource
	<div><div></div></div>	2787	2947	OK	/
	<div><div></div></div>	425	204	Not found	/favicon.ico
	<div><div></div></div>	432	102	Not implemented	/
	<div><div></div></div>	62847	45844	OK	/kpf_connect.p

Searching with Kerry

Kerry is a KDE front-end for the Beagle search tool, which indexes your personal information space to help you find whatever you need. You can use Kerry to find documents, e-mails, Web history, IM/ITC conversations, source code, images, music files, applications, and much more.

Because Kerry is a front-end to Beagle, it needs the beagle daemon to be functional. Kerry and Beagle can now index many KDE-specific sources of information, such as Kopete conversations, Konqueror history, or KMail messages. The result is a smooth integration into the KDE environment through the Kerry interface. Find more about Beagle in Chapter 4, *Searching with Beagle* (↑GNOME User Guide).

5.1 Searching Using Kerry

To find data using the Kerry tool, follow these steps:

- 1 Press **Alt + Space** to open the Kerry Beagle Search window. Alternatively, open the search window by left-clicking on the Kerry applet icon (a dog's head) in the system tray.
- 2 Enter the term to find in *Search*. To quickly clear the previously entered text, press the black arrow on the left.

The search is case insensitive. It does not matter whether you use uppercase or lowercase characters. To search for optional terms, use the *OR* keyword (in uppercase). For example, *Mars OR Venus* finds all data containing any occurrence

of Mars, Venus, or both. To exclude search terms, use a minus symbol (–) in front of them. For example, *Mars –Venus* finds all data containing any occurrence of Mars but without any occurrence of Venus. To search for an exact phrase, enclose the phrase in quotes. If you want to include only certain file type in results, specify the filename extension with *ext:.* For example, *Mars ext:xml* finds xml files containing Mars.

- 3 Select the scope of the search in the *Show* section of the right panel. To search all the indexed content, choose *Everything*. However, you can limit the search only to indexed *Applications*, *Contacts*, *Office documents*, instant messenger *Conversations*, *Images*, *Media* files, *Web pages*, or *File/Path names* by clicking the appropriate item in the panel. You can change the scope before or after the search is performed.

Change the sort order of results in the *Sort By* section of the right panel. To sort results by type, click *Type*. Sorting by *Date*, *Name*, and *Relevance* is also possible. You can change the sort order before or after the search is completed.

You can limit the results by date of last modification. To show all results regardless of the date of the last modification, click *Any Date* in the right panel. You can show items modified today, since yesterday, this week, month, or year by clicking the appropriate item in the right panel. You can change this before or after the search is performed.

- 4 Press **Enter** or click the icon to the right of the search field to start the search. Results are displayed in the main area of the window.

Results are displayed in a window, sorted according to your settings. Click any item to activate it. To open a folder containing a found file instead of the file itself, click the name of the folder to the right of the filename. To display more information about an item, click the icon with the *i* on the left.

You can change the scope of the search, sort order, or limitation by date at any time by clicking appropriate item in the panel on the right.

Use *Previous results* and *Next results* to move between pages of the result list. The number of items found is shown in the bottom part of the window.

5.2 Configuring Kerry

You can configure Kerry by right-clicking its icon in the tray and choosing *Configure Kerry* or by clicking *Configure* in Kerry's main window. The configuration dialog has four tabs.

On the *Search* tab, you can change the *Default result sort order*, *Maximum number of results displayed* on one page, or shortcuts for activating Kerry Beagle Search.

On the *Indexing* tab, set whether the Beagle indexing service should be started automatically and whether data should be indexed while the computer is operating on battery power. You can also determine which folders should be indexed by Kerry Beagle Search and which folders should not be indexed at all. See [Section 5.2.1, “Indexing More Directories”](#) (page 87) and [Section 5.2.2, “Preventing Files and Directories from Being Indexed”](#) (page 88) for detailed instructions.

On the *Backends* tab, choose which of the available Beagle back-ends should be enabled. To disable a back-end, uncheck it. For example, if you do not want your Kopete conversations be indexed by Kerry Beagle, uncheck the *Kopete* back-end.

On the *Daemon Status* tab, check the status of Beagle daemon. You can stop or start the daemon manually here. To use Kerry Beagle Search functionality, the daemon must be running.

5.2.1 Indexing More Directories

By default, Kerry indexes your home folder only. If you do not want your home folder to be indexed, uncheck the *Index my home folder* option on the *Indexing* tab of the Kerry configuration. To index more folders, follow these steps:

- 1 If the Kerry Beagle configuration dialog is not open yet, right-click the Kerry icon in the tray and choose *Configure Kerry*.
- 2 Click the *Indexing* tab.
- 3 Click the *Add* button in the middle part (*Index*) of the tab.
- 4 In the dialog that opens, choose the folder to index and click *OK*.

5 Press *OK*.

5.2.2 Preventing Files and Directories from Being Indexed

To exclude some folders or files from being indexed by Kerry, follow these steps:

- 1 If the Kerry Beagle configuration dialog is not open yet, right-click the Kerry icon in the tray and choose *Configure Kerry*.
- 2 Click the *Indexing* tab.
- 3 Click *Add* in the bottom part (*Privacy*) of the tab.
- 4 In the dialog that opens, choose a folder not to index by selecting the *Folder* option. Specify the path to the folder in the text field or press the folder button and choose the folder in a file dialog.

You can also specify files not to index by selecting *File name pattern* and specifying the file pattern.

5 Press *OK*.

Managing Print Jobs

Printers can either be connected to your system locally or accessed over a network. There are several ways to set up a printer in openSUSE: with YaST, with iPrint, or on the command line. There are also desktop tools in KDE or GNOME for setting up printers but we recommend to use either YaST (or iPrint???) for this task.

Refer to Section “Setting Up a Printer” (Chapter 2, *Setting Up Hardware Components with YaST*, ↑Start-Up) for detailed information how to configure printers with YaST. For information about how to manage printers with iPrint® refer to the *iPrint User Guide* at <http://www.novell.com/documentation/sled10/>.

NOTE: Troubleshooting

If you have problems configuring your printer, ask your system administrator. An in-depth coverage of printer configuration for administrators can be found in Chapter 9, *Printer Operation* (↑Reference).

This chapter describes how to set up printers with the KDE Printing Manager. After configuring the printer correctly, you can address it from any application.

6.1 Starting Print Jobs in KDE

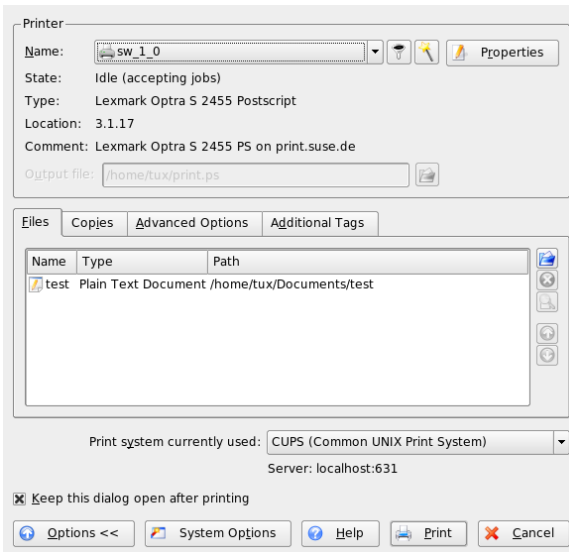
In KDE, you usually start print jobs with KPrinter. This application is started automatically each time you print from a KDE application. In the KPrinter dialog, choose a printer and edit the *Properties* of your print job, such as page orientation, pages per sheet, and duplex printing.

TIP: Sending Files to a Printer without Opening the Application

You can also start KPrinter manually by pressing Alt + F2 and entering `kprinter`. This is useful if you want to print one or several files without starting the application to view or edit the file. The KPrinter dialog then additionally includes the *Files* tab, where you can determine the files to print. Either drag them from the desktop and drop them into the list or use the file dialog to locate them.

To specify the number of copies and various other options, click *Expand* at the bottom left. The window then expands and shows three tabs: *Copies*, *Advanced Options*, and *Additional Tags*. See [Figure 6.1, “Starting a Print Job with KPrinter”](#) (page 90).

Figure 6.1 Starting a Print Job with KPrinter

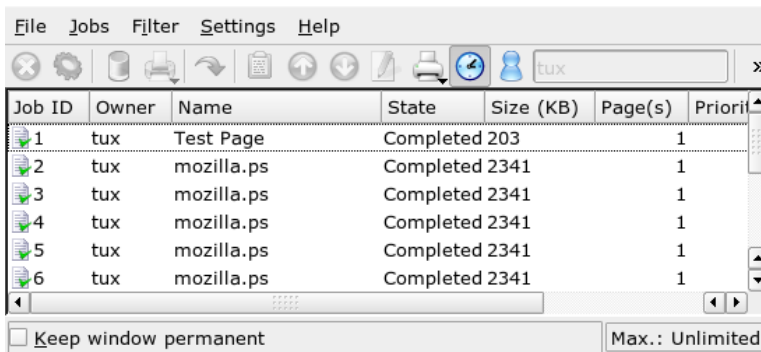


The *Copies* tab determines the page selection (all pages of the selected document, the currently selected one, or a range) and the number of copies. You may also choose to print only the even or only the odd numbered pages of the selected document. Use *Advanced Options* to specify any additional information for the print job. Enter any *Billing information* if needed or set a custom page label at the top and bottom of the page. The *Job Priority* can also be set here. The last tab, *Additional Tags* is rarely needed. Once your print job has been filed, you can watch its progress using KJobViewer.

6.2 Monitoring Print Jobs in KDE

Start KJobViewer from the main menu or with `kjobviewer` from the command line. A window like that in [Figure 6.2, “Monitoring Print Jobs with KJobViewer”](#) (page 91) opens, listing all the print jobs queued on your printer. As long as your print job is not active, you can edit it. Do this using the entries of the *Jobs* menu.

Figure 6.2 *Monitoring Print Jobs with KJobViewer*



If, for example, you want to check if you sent the correct document to the printer, you can stop the job and resume it if you decide to print it. Remove your own print jobs from the queue with *Remove*. To change the printer, select a different printer with *Move to Printer*.

With *Restart*, reprint a document. To do this, select *Filter > Toggle Completed Jobs*, select the desired document, and click *Jobs > Restart*. Clicking *Jobs > Job IPP Report* shows the technical details of a job. Use *Jobs > Increase Priority* and *Jobs > Decrease Priority* to set the priority, depending on how quickly you need the document.

Filter enables you to switch between various printers, toggle completed jobs, and limit the view to your own print jobs by selecting *Show Only User Jobs*. The current user is then displayed in the top right field.

Settings > Configure KJobViewer opens a configuration dialog. Here, determine the maximum number of print jobs to display. Enter a number in the field or use the slider to the right to determine a value. Press *OK* to save the setting or *Cancel* to exit the dialog without saving.

The icons in the toolbar correspond to the functions you can access by way of the menu. Display a help text explaining the function by holding the mouse pointer over one of the icons.

The job list consists of eight columns. The job ID is automatically assigned by the print system to identify the various jobs. The next column contains the login of the user who sent the job followed by the filename of the document. The status column indicates whether a job is still in the queue, currently being printed, or already completed. Next, the size of the document is displayed in kilobytes and number of pages. The default priority of 50 can be increased or reduced if necessary. Billing information can be cost centers or other company-specific information. If you right-click a job in the list, the *Jobs* menu opens under the mouse pointer, allowing you to select an action. Only a few functions are available for completed jobs. If you activate *Keep window permanent*, KJobViewer opens automatically the next time you log in.

Managing Passwords with KWallet Manager

Remembering all the passwords for protected resources to which you need to log in can be problematic. KWallet remembers them for you. It collects all passwords and stores them in an encrypted file. With a single master password, open your wallet to view, search, delete, or create entries. Normally you do not need to insert an entry manually. KDE recognizes if a resource requires authentication and KWallet starts automatically.

IMPORTANT: Protect Your KWallet Password

If you forget your KWallet password, it cannot be recovered. Furthermore, anyone who knows your password can obtain all information contained in the wallet.

7.1 Starting KWallet

When KWallet starts for the first time (for example, when you access a Web site where you must enter a password to log in), a dialog appears with the welcome screen. Choose between *Basic setup* (recommended) and *Advanced setup*. If you choose *Basic setup*, in the next screen you can choose whether to store personal information. Some KDE applications, such as Konqueror or KMail, can use the wallet system to store Web form data and cookies. Select *Yes, I wish to use the KDE wallet to store my personal information* to activate KWallet and leave with *Finish*.

If you choose *Advanced setup*, you have an additional security level screen. The default settings are generally acceptable for most users, but others may wish to change them.

Automatically close idle wallets closes wallets after a period of inactivity. To separate network passwords and local passwords, activate *Store network passwords and local passwords in separate wallet files*. Close with *Finish*.

You can alter the settings at any time by right-clicking the KWallet icon in the panel and selecting *Configure Wallet*. A dialog box opens where you can select several options. By default, all passwords are stored in one wallet, *kdewallet*, but you can also add new wallets. Once configured, KWallet appears in the panel.

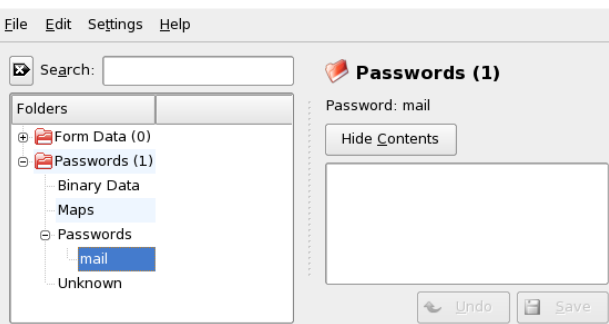
7.2 The KWallet Manager

To store data in your wallet or view its contents, click the KWallet icon in the panel. A dialog box opens, showing the wallets that are accessible on your system. Click the wallet to open. A window prompts for your password.

After a successful login, the KWallet Manager window opens. It is divided into four different parts: the top left part displays a summary, the top right part displays subfolders, the lower left part shows a list with folder entries, and the lower right part shows the contents of a selected entry.

In the KWallet Manager, you can change your master password for KWallet at any time with *File > Change Password*.

Figure 7.1 *The KWallet Manager Window*



You can add or delete folders. Selecting a folder updates the folder entry list and the summary display. Selecting a folder entry updates the entry contents pane and allows

you to edit that entry. Entries can also be created or deleted using the context menu for the folder contents.

7.3 Copying Your Wallet to Another Computer

For the most part, KWallet resides silently in the panel and is automatically activated if needed. However, you can copy your wallet files to another computer (for example, your laptop). To simplify this task, wallets can be dragged from the manager window to a file browser window. This let you easily package a new wallet for transfer to another environment. For example, a new wallet could be created and copied onto a removable flash memory device. Important passwords could be transferred there, so you have them available in other locations.

Controlling Your Desktop's Power Management with KPowersave

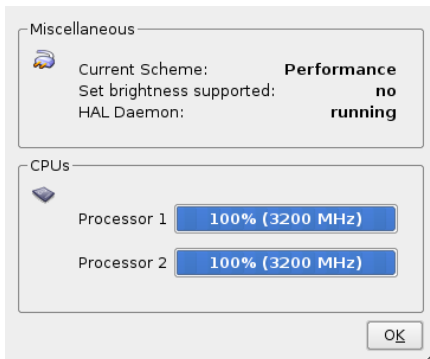
8

KPowersave is a small panel applet which allows you to control all power management functions supported by your system with just a few clicks on the desktop. You can track power consumption and CPU frequency, choose another power management scheme to match the tasks your system is facing, and send your system into suspend or standby state by just clicking the applet.

8.1 Tracking the Current State

For a quick check of how your system is doing and which power management measures have been taken, left-click the KPowersave panel icon.

Figure 8.1 *Tracking the Current Power Management State*



Apart from telling you at which speed your CPU or CPUs are running, KPowerSave provides detailed information on the power saving mode your system is in:

Current Scheme

Power management settings can be tied in to certain requirements your system needs to meet. This is done by assigning schemes.

Set brightness supported

Some hardware supports the dimming of your monitor's brightness as a means to save power.

8.2 Suspending Your Computer

Whenever you need to cut down power consumption and you do not need to run your system continuously, consider using one of the three suspend modes supported by openSUSE:

Suspend to Disk

All your data and the session data is saved to disk before the system is laid to rest. It is thus protected against data loss should you lose power in the meantime. Waking the system up again is much faster than booting it from scratch.

Suspend to RAM

All your data and the session data is saved to RAM. Bringing the system up again is faster than restoring a session from disk.

Standby

Your data is written to RAM, the display is shut down, but the system keeps running.

Whether all of these are available or just one or two depends on the capabilities of your hardware. To trigger your system to enter one of these modes, right-click the panel icon and select the respective option.

8.3 Saving Power by Using Schemes

Power management schemes let you adjust various power management parameters to the requirements of certain typical situations you are facing when using your machine. KPowerSave ships with a set of four preconfigured schemes which you can adjust to

your needs. To switch schemes with KPowerSave just right-click the panel icon and select *Set Active Scheme*. The following schemes are available:

Performance

Keep your machine running with full power and full speed to achieve maximum performance.

Acoustic

Apply any measure that makes sure your machine runs as quietly as possible.

Presentation

Disable any display power management and screen savers to make sure that your presentation is not interrupted by a blanked display or such like.

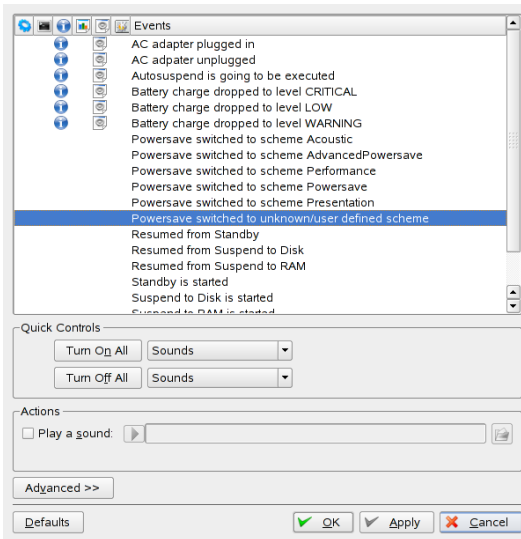
PowerSave

Apply aggressive power management methods to make sure that your machine runs as long as possible when put on battery power instead of AC power.

8.4 Configuring Notifications

KPowerSave provides various types of feedback upon certain events. To open the notification configuration dialog, either right-click the panel icon and select *Configure Notifications* or select *Configure KPowerSave > General Settings > Configure Notifications*.

Figure 8.2 *Configuring KPowersave Notifications*



KPowersave supports several different types of notifications that can be associated with different events. The most prominent of them are:

Sounds

Select one of the KDE system sounds to be played.

Logging

Specify the full path to a file where KPowersave should log to.

Program Execution

Specify the full command for a program that should be executed.

Message Windows

Have KPowersave throw a pop-up window.

Passive Windows

Have KPowersave throw a passive window that does not pull focus.

Basically, there are two different ways to configure KPowersave notifications. Either use the *Quick Controls* to toggle the notification status of multiple events at once or use the *Actions* settings to configure them one by one.

8.5 Configuring KPowersave

The KPowersave settings dialog comprises two different groups of settings:

Scheme Settings

Detailed configuration for all power management schemes supported by KPower-save.

General Settings

Miscellaneous options related to KPowersave's behavior, such as screen locking, auto-suspend, notification and autostart behavior.

8.5.1 Configuring Schemes

Power saving schemes in KPowersave offer controls to:

- Enable or disable a screen saver
- Enable or disable display power management
- Change the brightness of your display to reduce power consumption
- Enable or disable auto-suspend of your machine
- Enable or disable notifications KPowersave events

You can modify any of the preconfigured schemes, but you cannot delete them or add new ones.

To configure a KPowersave scheme, proceed as follows:

- 1 Right-click the panel icon and select *Configure KPowersave > Scheme Settings*.
- 2 Select the scheme you want to modify.
- 3 Open the *Screen Saver and DPMS* tab and determine whether your scheme requires specific tuning of the screen saver settings. If using your machine in presentation mode, you should consider disabling the screen saver altogether. If you want your display to automatically enter powersaving modes after a certain period

of time, activate *Enable specific display power management* and enter the number of minutes after which the display should use power management.

- 4 If your display hardware supports reducing the brightness for power saving reasons, open the *Brightness tab*, select *Enable scheme specific Brightness settings* and set the brightness value.
- 5 If you want your machine to automatically suspend (to disk) after a certain period of time, open the *Autosuspend tab*, select *Enable autosuspend* and determine when the machine should automatically enter suspend. To avoid problems with applications whose state cannot be properly restored when your session is resumed, maintain a blacklist of these applications via *Edit Blacklist*. If any of these applications is running, KPower save does not automatically suspend your desktop.
- 6 If you want KPower save to work quietly, turn off notifications for powersave events by entering the *Miscellaneous tab* and selecting *Disable Notifications*.
- 7 Click *OK* to apply your settings and leave the configuration dialog.

8.5.2 Configuring General Settings

If you want the screen to be locked before the system enters suspend or standby, activate the *Lock Screen* control and choose a screen saver. A locked screen might keep unauthorized users off this machine.

If you want your machine to enter suspend after a certain period of idleness, be aware that several applications can cause problems with auto-suspend. Use a black list to keep KPower save from triggering a suspend action when one or more of the listed applications are running.

To configure notifications, select *Configure Notifications* and proceed as described above. The dialog described here is exactly the same as if you had right-clicked the panel icon and selected *Configure Notifications*.

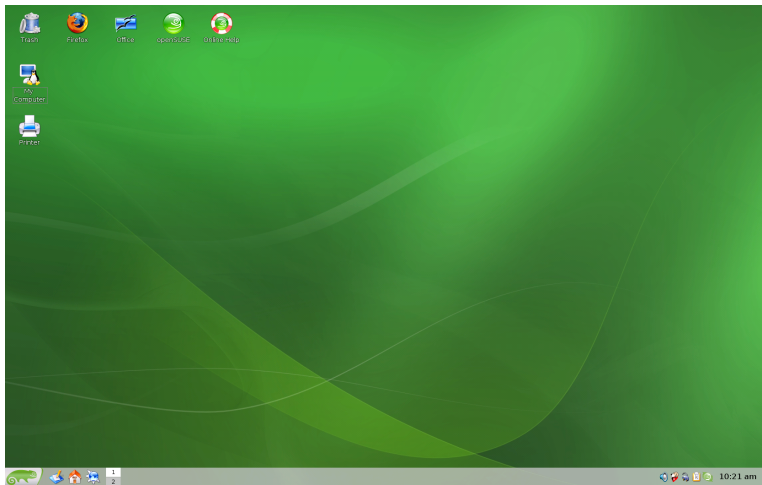
To configure KPower save to be automatically started on login, select *KPower save starts automatically on login*. If you select *Never ask me again on exit*, you will not be asked whether KPower save should be automatically started when you exit a session that had not previously included KPower save in the list of tasks to be started automatically.

Moving from Windows to Linux

A

If you are coming from Microsoft Windows*, take a look at how familiar elements of Windows translate to openSUSE®. After logging in, you will notice that the desktop has a familiar layout and recognizable icons, many of them similar to the Windows and Macintosh desktops.

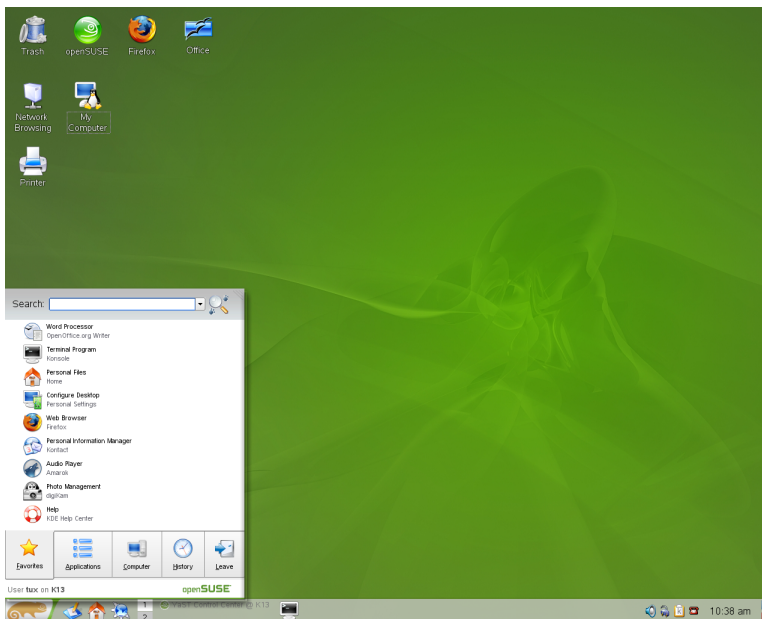
Figure A.1 *KDE Desktop*



A.1 Starting Applications from the Main Menu

Similar to the Start menu on Windows, you can access all the programs installed on your system from the main menu. To open the menu click the green SUSE icon in the left corner of the panel. The function-oriented menu structure makes it easy to find the right application for your purpose even if you do not know the application names yet. Find more information about the main menu in [Section 2.1.1, “Using the Main Menu”](#) (page 15).

Figure A.2 *Main Menu in KDE*

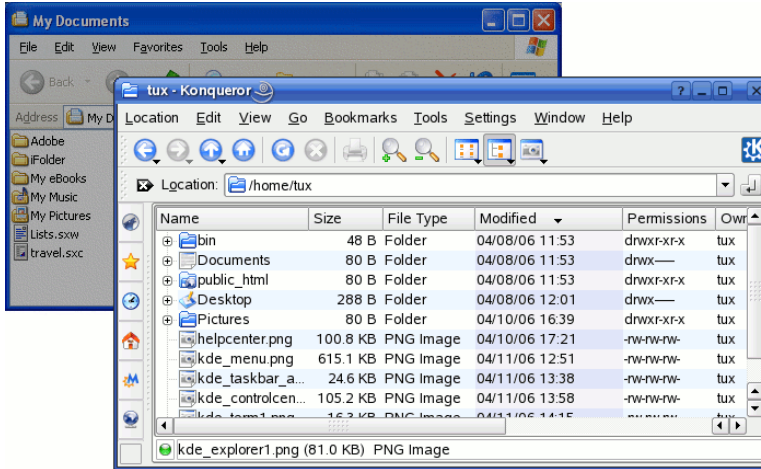


Alternatively, you can also start programs from the command line. Press **Alt + F2** to open a dialog where you can enter a command to start the application. The name of the command is often (but not always) the application name written in lowercase.

A.2 Managing Files

To start Konqueror, the default KDE file manager (and Internet browser), press **Alt + F2** and enter `konqueror`. To view the contents of your home directory, click *Personal Files*. To open this view directly, use the quick start icon with a house in the panel.

Figure A.3 *Windows Explorer and Konqueror*

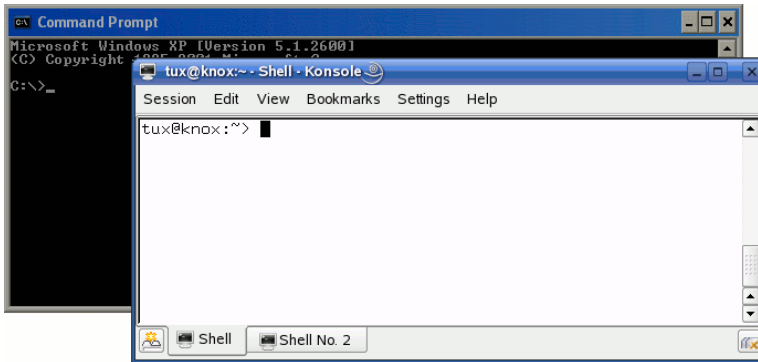


For more information about Konqueror as a file manager, see [Section 2.2, “Using Dolphin File Manager”](#) (page 19).

A.3 Using the Command Line

To run commands in a command line environment, similar to a command prompt on Windows, press **Alt + F2** and enter `konsole` or use the quick start icon in the panel.

Figure A.4 *Windows Command Prompt and Konsole Terminal*



A.4 Customizing Your Desktop

To change to the way your KDE desktops looks and behaves, press **Alt + F2** and enter **kcontrol**. Some of the settings you might want to change include the desktop background, screen saver, keyboard and mouse configuration, sounds, and file associations.

Figure A.5 *Windows Control Panel and KDE Control Center*



For more information, see [Section 3.1, “The Personal Settings”](#) (page 39).

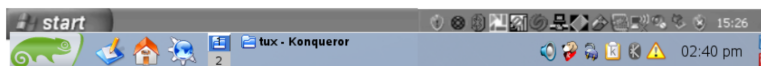
A.5 Switching between Applications

Similar to the taskbar on Windows, the bottom panel in KDE lets you easily switch between open windows. Unlike Windows, KDE lets you set up multiple desktops where each one can run different programs. Switch between them with a single click.

TIP: Using Shortcut Keys

You can also use shortcut keys to switch between your multiple desktops and the applications running. Use the familiar **Alt + →|** to switch between applications. With **Ctrl + F1**, **Ctrl + F2**, etc., switch between desktops.

Figure A.6 *Windows Panel and KDE Panel*

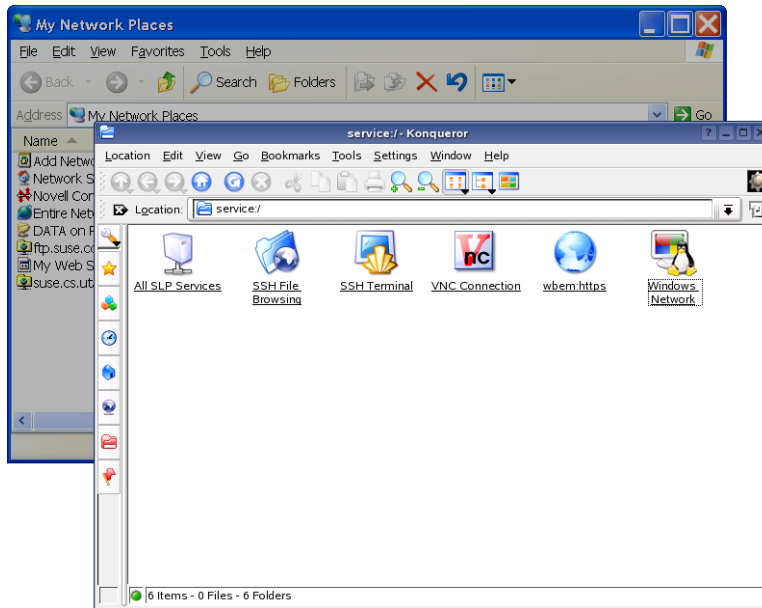


For more information about Konqueror as a file manager, see [Section 3.2, “Configuring Desktop Objects”](#) (page 42).

A.6 Accessing Network Resources

From your desktop, you can access files and directories or certain services on remote hosts or make your own files and directories available to other users in your network. openSUSE offers various different ways of accessing and creating network-shared resources. Given that the network structure and the configuration of your computer allow for it, you can easily browse your network for shared resources and services with your file manager, Konqueror.

Figure A.7 *Windows My Network Places and Konqueror Network Browsing*



To learn more about the various possibilities of accessing network resources, refer to [Chapter 4, Accessing Network Resources](#) (page 67).

GNU Licenses

This appendix contains the GNU General Public License and the GNU Free Documentation License.

GNU General Public License

Version 2, June 1991

Copyright (C) 1989, 1991 Free Software Foundation, Inc. 59 Temple Place - Suite 330, Boston, MA 02111-1307, USA

Everyone is permitted to copy and distribute verbatim copies of this license document, but changing it is not allowed.

Preamble

The licenses for most software are designed to take away your freedom to share and change it. By contrast, the GNU General Public License is intended to guarantee your freedom to share and change free software--to make sure the software is free for all its users. This General Public License applies to most of the Free Software Foundation's software and to any other program whose authors commit to using it. (Some other Free Software Foundation software is covered by the GNU Library General Public License instead.) You can apply it to your programs, too.

When we speak of free software, we are referring to freedom, not price. Our General Public Licenses are designed to make sure that you have the freedom to distribute copies of free software (and charge for this service if you wish), that you receive source code or can get it if you want it, that you can change the software or use pieces of it in new free programs; and that you know you can do these things.

To protect your rights, we need to make restrictions that forbid anyone to deny you these rights or to ask you to surrender the rights. These restrictions translate to certain responsibilities for you if you distribute copies of the software, or if you modify it.

For example, if you distribute copies of such a program, whether gratis or for a fee, you must give the recipients all the rights that you have. You must make sure that they, too, receive or can get the source code. And you must show them these terms so they know their rights.

We protect your rights with two steps: (1) copyright the software, and (2) offer you this license which gives you legal permission to copy, distribute and/or modify the software.

Also, for each author's protection and ours, we want to make certain that everyone understands that there is no warranty for this free software. If the software is modified by someone else and passed on, we want its recipients to know that what they have is not the original, so that any problems introduced by others will not reflect on the original authors' reputations.

Finally, any free program is threatened constantly by software patents. We wish to avoid the danger that redistributors of a free program will individually obtain patent licenses, in effect making the program proprietary. To prevent this, we have made it clear that any patent must be licensed for everyone's free use or not licensed at all.

The precise terms and conditions for copying, distribution and modification follow.

GNU GENERAL PUBLIC LICENSE TERMS AND CONDITIONS FOR COPYING, DISTRIBUTION AND MODIFICATION

0. This License applies to any program or other work which contains a notice placed by the copyright holder saying it may be distributed under the terms of this General Public License. The “Program”, below, refers to any such program or work, and a “work based on the Program” means either the Program or any derivative work under copyright law: that is to say, a work containing the Program or a portion of it, either verbatim or with modifications and/or translated into another language. (Hereinafter, translation is included without limitation in the term “modification”.) Each licensee is addressed as “you”.

Activities other than copying, distribution and modification are not covered by this License; they are outside its scope. The act of running the Program is not restricted, and the output from the Program is covered only if its contents constitute a work based on the Program (independent of having been made by running the Program). Whether that is true depends on what the Program does.

1. You may copy and distribute verbatim copies of the Program’s source code as you receive it, in any medium, provided that you conspicuously and appropriately publish on each copy an appropriate copyright notice and disclaimer of warranty; keep intact all the notices that refer to this License and to the absence of any warranty; and give any other recipients of the Program a copy of this License along with the Program.

You may charge a fee for the physical act of transferring a copy, and you may at your option offer warranty protection in exchange for a fee.

2. You may modify your copy or copies of the Program or any portion of it, thus forming a work based on the Program, and copy and distribute such modifications or work under the terms of Section 1 above, provided that you also meet all of these conditions:

a) You must cause the modified files to carry prominent notices stating that you changed the files and the date of any change.

b) You must cause any work that you distribute or publish, that in whole or in part contains or is derived from the Program or any part thereof, to be licensed as a whole at no charge to all third parties under the terms of this License.

c) If the modified program normally reads commands interactively when run, you must cause it, when started running for such interactive use in the most ordinary way, to print or display an announcement including an appropriate copyright notice and a notice that there is no warranty (or else, saying that you provide a warranty) and that users may redistribute the program under these conditions, and telling the user how to view a copy of this License. (Exception: if the Program itself is interactive but does not normally print such an announcement, your work based on the Program is not required to print an announcement.)

These requirements apply to the modified work as a whole. If identifiable sections of that work are not derived from the Program, and can be reasonably considered independent and separate works in themselves, then this License, and its terms, do not apply to those sections when you distribute them as separate works. But when you distribute the same sections as part of a whole which is a work based on the Program, the distribution of the whole must be on the terms of this License, whose permissions for other licensees extend to the entire whole, and thus to each and every part regardless of who wrote it.

Thus, it is not the intent of this section to claim rights or contest your rights to work written entirely by you; rather, the intent is to exercise the right to control the distribution of derivative or collective works based on the Program.

In addition, mere aggregation of another work not based on the Program with the Program (or with a work based on the Program) on a volume of a storage or distribution medium does not bring the other work under the scope of this License.

3. You may copy and distribute the Program (or a work based on it, under Section 2) in object code or executable form under the terms of Sections 1 and 2 above provided that you also do one of the following:

a) Accompany it with the complete corresponding machine-readable source code, which must be distributed under the terms of Sections 1 and 2 above on a medium customarily used for software interchange; or,

b) Accompany it with a written offer, valid for at least three years, to give any third party, for a charge no more than your cost of physically performing source distribution, a complete machine-readable copy of the corresponding source code, to be distributed under the terms of Sections 1 and 2 above on a medium customarily used for software interchange; or,

c) Accompany it with the information you received as to the offer to distribute corresponding source code. (This alternative is allowed only for noncommercial distribution and only if you received the program in object code or executable form with such an offer, in accord with Subsection b above.)

The source code for a work means the preferred form of the work for making modifications to it. For an executable work, complete source code means all the source code for all modules it contains, plus any associated interface definition files, plus the scripts used to control compilation and installation of the executable. However, as a special exception, the source code distributed need not include anything that is normally distributed (in either source or binary form) with the major components (compiler, kernel, and so on) of the operating system on which the executable runs, unless that component itself accompanies the executable.

If distribution of executable or object code is made by offering access to copy from a designated place, then offering equivalent access to copy the source code from the same place counts as distribution of the source code, even though third parties are not compelled to copy the source along with the object code.

4. You may not copy, modify, sublicense, or distribute the Program except as expressly provided under this License. Any attempt otherwise to copy, modify, sublicense or distribute the Program is void, and will automatically terminate your rights under this License. However, parties who have received copies, or rights, from you under this License will not have their licenses terminated so long as such parties remain in full compliance.

5. You are not required to accept this License, since you have not signed it. However, nothing else grants you permission to modify or distribute the Program or its derivative works. These actions are prohibited by law if you do not accept this License. Therefore, by modifying or distributing the Program (or any work based on the Program), you indicate your acceptance of this License to do so, and all its terms and conditions for copying, distributing or modifying the Program or works based on it.

6. Each time you redistribute the Program (or any work based on the Program), the recipient automatically receives a license from the original licensor to copy, distribute or modify the Program subject to these terms and conditions. You may not impose any further restrictions on the recipients' exercise of the rights granted herein. You are not responsible for enforcing compliance by third parties to this License.

7. If, as a consequence of a court judgment or allegation of patent infringement or for any other reason (not limited to patent issues), conditions are imposed on you (whether by court order, agreement or otherwise) that contradict the conditions of this License, they do not excuse you from the conditions of this License. If you cannot distribute so as to satisfy simultaneously your obligations under this License and any other pertinent obligations, then as a consequence you may not distribute the Program at all. For example, if a patent license would not permit royalty-free redistribution of the Program by all those who receive copies directly or indirectly through you, then the only way you could satisfy both it and this License would be to refrain entirely from distribution of the Program.

If any portion of this section is held invalid or unenforceable under any particular circumstance, the balance of the section is intended to apply and the section as a whole is intended to apply in other circumstances.

It is not the purpose of this section to induce you to infringe any patents or other property right claims or to contest validity of any such claims; this section has the sole purpose of protecting the integrity of the free software distribution system, which is implemented by public license practices. Many people have made generous contributions to the wide range of software distributed through that system in reliance on consistent application of that system; it is up to the author/donor to decide if he or she is willing to distribute software through any other system and a licensee cannot impose that choice.

This section is intended to make thoroughly clear what is believed to be a consequence of the rest of this License.

8. If the distribution and/or use of the Program is restricted in certain countries either by patents or by copyrighted interfaces, the original copyright holder who places the Program under this License may add an explicit geographical distribution limitation excluding those countries, so that distribution is permitted only in or among countries not thus excluded. In such case, this License incorporates the limitation as if written in the body of this License.

9. The Free Software Foundation may publish revised and/or new versions of the General Public License from time to time. Such new versions will be similar in spirit to the present version, but may differ in detail to address new problems or concerns.

Each version is given a distinguishing version number. If the Program specifies a version number of this License which applies to it and “any later version”, you have the option of following the terms and conditions either of that version or of any later version published by the Free Software Foundation. If the Program does not specify a version number of this License, you may choose any version ever published by the Free Software Foundation.

10. If you wish to incorporate parts of the Program into other free programs whose distribution conditions are different, write to the author to ask for permission. For software which is copyrighted by the Free Software Foundation, write to the Free Software Foundation; we sometimes make exceptions for this. Our decision will be guided by the two goals of preserving the free status of all derivatives of our free software and of promoting the sharing and reuse of software generally.

NO WARRANTY

11. BECAUSE THE PROGRAM IS LICENSED FREE OF CHARGE, THERE IS NO WARRANTY FOR THE PROGRAM, TO THE EXTENT PERMITTED BY APPLICABLE LAW. EXCEPT WHEN OTHERWISE STATED IN WRITING THE COPYRIGHT HOLDERS AND/OR OTHER PARTIES PROVIDE THE PROGRAM “AS IS” WITHOUT WARRANTY OF ANY KIND, EITHER EXPRESSED OR IMPLIED, INCLUDING, BUT NOT LIMITED TO, THE IMPLIED WARRANTIES OF MERCHANTABILITY AND FITNESS FOR A PARTICULAR PURPOSE. THE ENTIRE RISK AS TO THE QUALITY AND PERFORMANCE OF THE PROGRAM IS WITH YOU. SHOULD THE PROGRAM PROVE DEFECTIVE, YOU ASSUME THE COST OF ALL NECESSARY SERVICING, REPAIR OR CORRECTION.

12. IN NO EVENT UNLESS REQUIRED BY APPLICABLE LAW OR AGREED TO IN WRITING WILL ANY COPYRIGHT HOLDER, OR ANY OTHER PARTY WHO MAY MODIFY AND/OR REDISTRIBUTE THE PROGRAM AS PERMITTED ABOVE, BE LIABLE TO YOU FOR DAMAGES, INCLUDING ANY GENERAL, SPECIAL, INCIDENTAL OR CONSEQUENTIAL DAMAGES ARISING OUT OF THE USE OR INABILITY TO USE THE PROGRAM (INCLUDING BUT NOT LIMITED TO LOSS OF DATA OR DATA BEING RENDERED INACCURATE OR LOSSES SUSTAINED BY YOU OR THIRD PARTIES OR A FAILURE OF THE PROGRAM TO OPERATE WITH ANY OTHER PROGRAMS), EVEN IF SUCH HOLDER OR OTHER PARTY HAS BEEN ADVISED OF THE POSSIBILITY OF SUCH DAMAGES.

END OF TERMS AND CONDITIONS

How to Apply These Terms to Your New Programs

If you develop a new program, and you want it to be of the greatest possible use to the public, the best way to achieve this is to make it free software which everyone can redistribute and change under these terms.

To do so, attach the following notices to the program. It is safest to attach them to the start of each source file to most effectively convey the exclusion of warranty; and each file should have at least the “copyright” line and a pointer to where the full notice is found.

one line to give the program's name and an idea of what it does. Copyright (C) yyyy name of author

This program is free software; you can redistribute it and/or modify it under the terms of the GNU General Public License as published by the Free Software Foundation; either version 2 of the License, or (at your option) any later version.

This program is distributed in the hope that it will be useful, but WITHOUT ANY WARRANTY; without even the implied warranty of MERCHANTABILITY or FITNESS FOR A PARTICULAR PURPOSE. See the GNU General Public License for more details.

You should have received a copy of the GNU General Public License along with this program; if not, write to the Free Software Foundation, Inc., 59 Temple Place - Suite 330, Boston, MA 02111-1307, USA.

Also add information on how to contact you by electronic and paper mail.

If the program is interactive, make it output a short notice like this when it starts in an interactive mode:

```
Gnomovision version 69, Copyright (C) year name of author
Gnomovision comes with ABSOLUTELY NO WARRANTY; for details
type `show w'. This is free software, and you are welcome
to redistribute it under certain conditions; type `show c'
for details.
```

The hypothetical commands 'show w' and 'show c' should show the appropriate parts of the General Public License. Of course, the commands you use may be called something other than 'show w' and 'show c'; they could even be mouse-clicks or menu items--whatever suits your program.

You should also get your employer (if you work as a programmer) or your school, if any, to sign a "copyright disclaimer" for the program, if necessary. Here is a sample; alter the names:

```
Yoyodyne, Inc., hereby disclaims all copyright
interest in the program `Gnomovision'
(which makes passes at compilers) written
by James Hacker.
```

```
signature of Ty Coon, 1 April 1989
Ty Coon, President of Vice
```

This General Public License does not permit incorporating your program into proprietary programs. If your program is a subroutine library, you may consider it more useful to permit linking proprietary applications with the library. If this is what you want to do, use the GNU Lesser General Public License [<http://www.fsf.org/licenses/lgpl.html>] instead of this License.

GNU Free Documentation License

Version 1.2, November 2002

Copyright (C) 2000,2001,2002 Free Software Foundation, Inc. 59 Temple Place, Suite 330, Boston, MA 02111-1307 USA

Everyone is permitted to copy and distribute verbatim copies of this license document, but changing it is not allowed.

PREAMBLE

The purpose of this License is to make a manual, textbook, or other functional and useful document "free" in the sense of freedom: to assure everyone the effective freedom to copy and redistribute it, with or without modifying it, either commercially or noncommercially. Secondly, this License preserves for the author and publisher a way to get credit for their work, while not being considered responsible for modifications made by others.

This License is a kind of "copyleft", which means that derivative works of the document must themselves be free in the same sense. It complements the GNU General Public License, which is a copyleft license designed for free software.

We have designed this License in order to use it for manuals for free software, because free software needs free documentation: a free program should come with manuals providing the same freedoms that the software does. But this License is not limited to software manuals; it can be used for any textual work, regardless of subject matter or whether it is published as a printed book. We recommend this License principally for works whose purpose is instruction or reference.

APPLICABILITY AND DEFINITIONS

This License applies to any manual or other work, in any medium, that contains a notice placed by the copyright holder saying it can be distributed under the terms of this License. Such a notice grants a world-wide, royalty-free license, unlimited in duration, to use that work under the conditions stated herein. The “Document”, below, refers to any such manual or work. Any member of the public is a licensee, and is addressed as “you”. You accept the license if you copy, modify or distribute the work in a way requiring permission under copyright law.

A “Modified Version” of the Document means any work containing the Document or a portion of it, either copied verbatim, or with modifications and/or translated into another language.

A “Secondary Section” is a named appendix or a front-matter section of the Document that deals exclusively with the relationship of the publishers or authors of the Document to the Document’s overall subject (or to related matters) and contains nothing that could fall directly within that overall subject. (Thus, if the Document is in part a textbook of mathematics, a Secondary Section may not explain any mathematics.) The relationship could be a matter of historical connection with the subject or with related matters, or of legal, commercial, philosophical, ethical or political position regarding them.

The “Invariant Sections” are certain Secondary Sections whose titles are designated, as being those of Invariant Sections, in the notice that says that the Document is released under this License. If a section does not fit the above definition of Secondary then it is not allowed to be designated as Invariant. The Document may contain zero Invariant Sections. If the Document does not identify any Invariant Sections then there are none.

The “Cover Texts” are certain short passages of text that are listed, as Front-Cover Texts or Back-Cover Texts, in the notice that says that the Document is released under this License. A Front-Cover Text may be at most 5 words, and a Back-Cover Text may be at most 25 words.

A “Transparent” copy of the Document means a machine-readable copy, represented in a format whose specification is available to the general public, that is suitable for revising the document straightforwardly with generic text editors or (for images composed of pixels) generic paint programs or (for drawings) some widely available drawing editor, and that is suitable for input to text formatters or for automatic translation to a variety of formats suitable for input to text formatters. A copy made in an otherwise Transparent file format whose markup, or absence of markup, has been arranged to thwart or discourage subsequent modification by readers is not Transparent. An image format is not Transparent if used for any substantial amount of text. A copy that is not “Transparent” is called “Opaque”.

Examples of suitable formats for Transparent copies include plain ASCII without markup, Texinfo input format, LaTeX input format, SGML or XML using a publicly available DTD, and standard-conforming simple HTML, PostScript or PDF designed for human modification. Examples of transparent image formats include PNG, XCF and JPG. Opaque formats include proprietary formats that can be read and edited only by proprietary word processors, SGML or XML for which the DTD and/or processing tools are not generally available, and the machine-generated HTML, PostScript or PDF produced by some word processors for output purposes only.

The “Title Page” means, for a printed book, the title page itself, plus such following pages as are needed to hold, legibly, the material this License requires to appear in the title page. For works in formats which do not have any title page as such, “Title Page” means the text near the most prominent appearance of the work’s title, preceding the beginning of the body of the text.

A section “Entitled XYZ” means a named subunit of the Document whose title either is precisely XYZ or contains XYZ in parentheses following text that translates XYZ in another language. (Here XYZ stands for a specific section name mentioned below, such as “Acknowledgements”, “Dedications”, “Endorsements”, or “History”.) To “Preserve the Title” of such a section when you modify the Document means that it remains a section “Entitled XYZ” according to this definition.

The Document may include Warranty Disclaimers next to the notice which states that this License applies to the Document. These Warranty Disclaimers are considered to be included by reference in this License, but only as regards disclaiming warranties: any other implication that these Warranty Disclaimers may have is void and has no effect on the meaning of this License.

VERBATIM COPYING

You may copy and distribute the Document in any medium, either commercially or noncommercially, provided that this License, the copyright notices, and the license notice saying this License applies to the Document are reproduced in all copies, and that you add no other conditions whatsoever to those of this License. You may not use technical measures to obstruct or control the reading or further copying of the copies you make or distribute. However, you may accept compensation in exchange for copies. If you distribute a large enough number of copies you must also follow the conditions in section 3.

You may also lend copies, under the same conditions stated above, and you may publicly display copies.

COPYING IN QUANTITY

If you publish printed copies (or copies in media that commonly have printed covers) of the Document, numbering more than 100, and the Document’s license notice requires Cover Texts, you must enclose the copies in covers that carry, clearly and legibly, all these Cover Texts: Front-Cover Texts on the front cover, and Back-Cover Texts on the back cover. Both covers must also clearly and legibly identify you as the publisher of these copies. The front cover must present the full title with all words of the title equally prominent and visible. You may add other material on the covers in addition. Copying with changes limited to the covers, as long as they preserve the title of the Document and satisfy these conditions, can be treated as verbatim copying in other respects.

If the required texts for either cover are too voluminous to fit legibly, you should put the first ones listed (as many as fit reasonably) on the actual cover, and continue the rest onto adjacent pages.

If you publish or distribute Opaque copies of the Document numbering more than 100, you must either include a machine-readable Transparent copy along with each Opaque copy, or state in or with each Opaque copy a computer-network location from which the general network-using public has access to download using public-standard network protocols a complete Transparent copy of the Document, free of added material. If you use the latter option, you must take reasonably prudent steps, when you begin distribution of Opaque copies in quantity, to ensure that this Transparent copy will remain thus accessible at the stated location until at least one year after the last time you distribute an Opaque copy (directly or through your agents or retailers) of that edition to the public.

It is requested, but not required, that you contact the authors of the Document well before redistributing any large number of copies, to give them a chance to provide you with an updated version of the Document.

MODIFICATIONS

You may copy and distribute a Modified Version of the Document under the conditions of sections 2 and 3 above, provided that you release the Modified Version under precisely this License, with the Modified Version filling the role of the Document, thus licensing distribution and modification of the Modified Version to whoever possesses a copy of it. In addition, you must do these things in the Modified Version:

- A. Use in the Title Page (and on the covers, if any) a title distinct from that of the Document, and from those of previous versions (which should, if there were any, be listed in the History section of the Document). You may use the same title as a previous version if the original publisher of that version gives permission.
- B. List on the Title Page, as authors, one or more persons or entities responsible for authorship of the modifications in the Modified Version, together with at least five of the principal authors of the Document (all of its principal authors, if it has fewer than five), unless they release you from this requirement.
- C. State on the Title page the name of the publisher of the Modified Version, as the publisher.
- D. Preserve all the copyright notices of the Document.
- E. Add an appropriate copyright notice for your modifications adjacent to the other copyright notices.
- F. Include, immediately after the copyright notices, a license notice giving the public permission to use the Modified Version under the terms of this License, in the form shown in the Addendum below.
- G. Preserve in that license notice the full lists of Invariant Sections and required Cover Texts given in the Document's license notice.
- H. Include an unaltered copy of this License.
- I. Preserve the section Entitled "History", Preserve its Title, and add to it an item stating at least the title, year, new authors, and publisher of the Modified Version as given on the Title Page. If there is no section Entitled "History" in the Document, create one stating the title, year, authors, and publisher of the Document as given on its Title Page, then add an item describing the Modified Version as stated in the previous sentence.
- J. Preserve the network location, if any, given in the Document for public access to a Transparent copy of the Document, and likewise the network locations given in the Document for previous versions it was based on. These may be placed in the "History" section. You may omit a network location for a work that was published at least four years before the Document itself, or if the original publisher of the version it refers to gives permission.
- K. For any section Entitled "Acknowledgements" or "Dedications", Preserve the Title of the section, and preserve in the section all the substance and tone of each of the contributor acknowledgements and/or dedications given therein.
- L. Preserve all the Invariant Sections of the Document, unaltered in their text and in their titles. Section numbers or the equivalent are not considered part of the section titles.
- M. Delete any section Entitled "Endorsements". Such a section may not be included in the Modified Version.
- N. Do not retitle any existing section to be Entitled "Endorsements" or to conflict in title with any Invariant Section.
- O. Preserve any Warranty Disclaimers.

If the Modified Version includes new front-matter sections or appendices that qualify as Secondary Sections and contain no material copied from the Document, you may at your option designate some or all of these sections as invariant. To do this, add their titles to the list of Invariant Sections in the Modified Version's license notice. These titles must be distinct from any other section titles.

You may add a section Entitled "Endorsements", provided it contains nothing but endorsements of your Modified Version by various parties--for example, statements of peer review or that the text has been approved by an organization as the authoritative definition of a standard.

You may add a passage of up to five words as a Front-Cover Text, and a passage of up to 25 words as a Back-Cover Text, to the end of the list of Cover Texts in the Modified Version. Only one passage of Front-Cover Text and one of Back-Cover Text may be added by (or through arrangements made by) any one entity. If the Document already includes a cover text for the same cover, previously added by you or by arrangement made by the same entity you are acting on behalf of, you may not add another; but you may replace the old one, on explicit permission from the previous publisher that added the old one.

The author(s) and publisher(s) of the Document do not by this License give permission to use their names for publicity for or to assert or imply endorsement of any Modified Version.

COMBINING DOCUMENTS

You may combine the Document with other documents released under this License, under the terms defined in section 4 above for modified versions, provided that you include in the combination all of the Invariant Sections of all of the original documents, unmodified, and list them all as Invariant Sections of your combined work in its license notice, and that you preserve all their Warranty Disclaimers.

The combined work need only contain one copy of this License, and multiple identical Invariant Sections may be replaced with a single copy. If there are multiple Invariant Sections with the same name but different contents, make the title of each such section unique by adding at the end of it, in parentheses, the name of the original author or publisher of that section if known, or else a unique number. Make the same adjustment to the section titles in the list of Invariant Sections in the license notice of the combined work.

In the combination, you must combine any sections Entitled “History” in the various original documents, forming one section Entitled “History”; likewise combine any sections Entitled “Acknowledgements”, and any sections Entitled “Dedications”. You must delete all sections Entitled “Endorsements”.

COLLECTIONS OF DOCUMENTS

You may make a collection consisting of the Document and other documents released under this License, and replace the individual copies of this License in the various documents with a single copy that is included in the collection, provided that you follow the rules of this License for verbatim copying of each of the documents in all other respects.

You may extract a single document from such a collection, and distribute it individually under this License, provided you insert a copy of this License into the extracted document, and follow this License in all other respects regarding verbatim copying of that document.

AGGREGATION WITH INDEPENDENT WORKS

A compilation of the Document or its derivatives with other separate and independent documents or works, in or on a volume of a storage or distribution medium, is called an “aggregate” if the copyright resulting from the compilation is not used to limit the legal rights of the compilation’s users beyond what the individual works permit. When the Document is included in an aggregate, this License does not apply to the other works in the aggregate which are not themselves derivative works of the Document.

If the Cover Text requirement of section 3 is applicable to these copies of the Document, then if the Document is less than one half of the entire aggregate, the Document’s Cover Texts may be placed on covers that bracket the Document within the aggregate, or the electronic equivalent of covers if the Document is in electronic form. Otherwise they must appear on printed covers that bracket the whole aggregate.

TRANSLATION

Translation is considered a kind of modification, so you may distribute translations of the Document under the terms of section 4. Replacing Invariant Sections with translations requires special permission from their copyright holders, but you may include translations of some or all Invariant Sections in addition to the original versions of these Invariant Sections. You may include a translation of this License, and all the license notices in the Document, and any Warranty Disclaimers, provided that you also include the original English version of this License and the original versions of those notices and disclaimers. In case of a disagreement between the translation and the original version of this License or a notice or disclaimer, the original version will prevail.

If a section in the Document is Entitled “Acknowledgements”, “Dedications”, or “History”, the requirement (section 4) to Preserve its Title (section 1) will typically require changing the actual title.

TERMINATION

You may not copy, modify, sublicense, or distribute the Document except as expressly provided for under this License. Any other attempt to copy, modify, sublicense or distribute the Document is void, and will automatically terminate your rights under this License. However, parties who have received copies, or rights, from you under this License will not have their licenses terminated so long as such parties remain in full compliance.

FUTURE REVISIONS OF THIS LICENSE

The Free Software Foundation may publish new, revised versions of the GNU Free Documentation License from time to time. Such new versions will be similar in spirit to the present version, but may differ in detail to address new problems or concerns. See <http://www.gnu.org/copyleft/>.

Each version of the License is given a distinguishing version number. If the Document specifies that a particular numbered version of this License “or any later version” applies to it, you have the option of following the terms and conditions either of that specified version or of any later version that has been published (not as a draft) by the Free Software Foundation. If the Document does not specify a version number of this License, you may choose any version ever published (not as a draft) by the Free Software Foundation.

ADDENDUM: How to use this License for your documents

To use this License in a document you have written, include a copy of the License in the document and put the following copyright and license notices just after the title page:

Copyright (c) YEAR YOUR NAME.

Permission is granted to copy, distribute and/or modify this document under the terms of the GNU Free Documentation License, Version 1.2 only as published by the Free Software Foundation; with the Invariant Section being this copyright notice and license. A copy of the license is included in the section entitled “GNU Free Documentation License”.

If you have Invariant Sections, Front-Cover Texts and Back-Cover Texts, replace the “with...Texts.” line with this:

with the Invariant Sections being LIST THEIR TITLES, with the
Front-Cover Texts being LIST, and with the Back-Cover Texts being LIST.

If you have Invariant Sections without Cover Texts, or some other combination of the three, merge those two alternatives to suit the situation.

If your document contains nontrivial examples of program code, we recommend releasing these examples in parallel under your choice of free software license, such as the GNU General Public License, to permit their use in free software.